

Portumna Outdoor Recreation Building & Park

1. Our Vision

“Our vision is to position Portumna as a leading lakeshore destination for outdoor recreation, water safety, and heritage, by creating a sustainable, accessible hub that connects people to nature and community while protecting Lough Derg’s unique environment”.

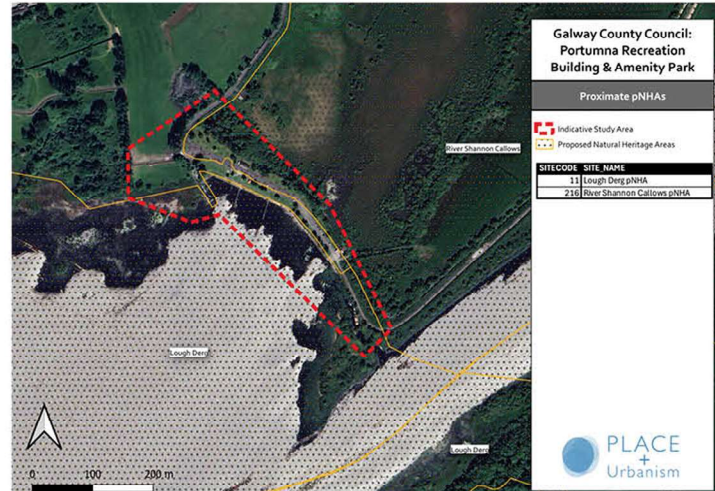


1.1 Portumna Site Location

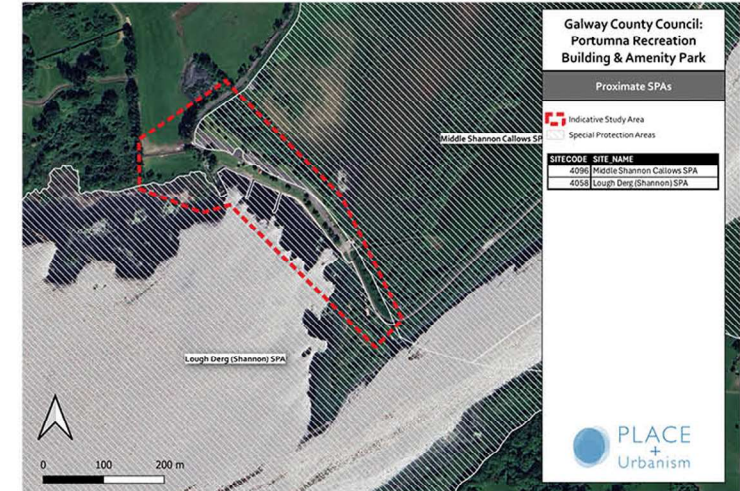
Portumna Outdoor Recreation Building & Park

2. Designated Zones Maps

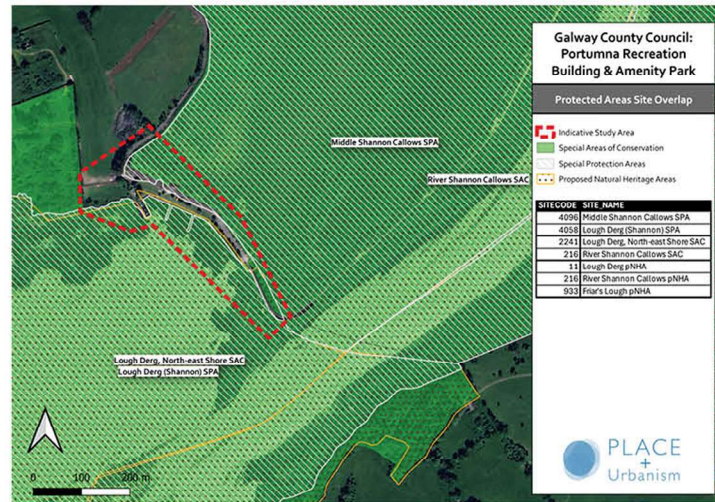
- The maps illustrate the relationship between the proposed Portumna Recreation Building & Amenity Park study area and surrounding environmentally designated sites.
- The site overlaps with, or is adjacent to, several protected ecological designations including:
 - SACs (Special Areas of Conservation)
 - SPAs (Special Protection Areas)
 - pNHAs (proposed Natural Heritage Areas)



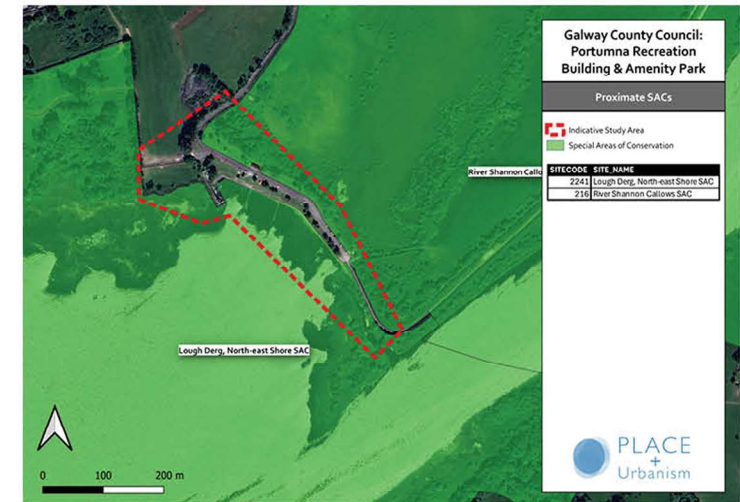
2.1 Portumna Water Park Site and pNHA



2.2 Portumna Water Park Site and SPA



2.3 Portumna Water Park Natura 2000 Sites



2.4 Portumna Water Park Site and SAC Overlap

Portumna Outdoor Recreation Building & Park

3. Habitat Map



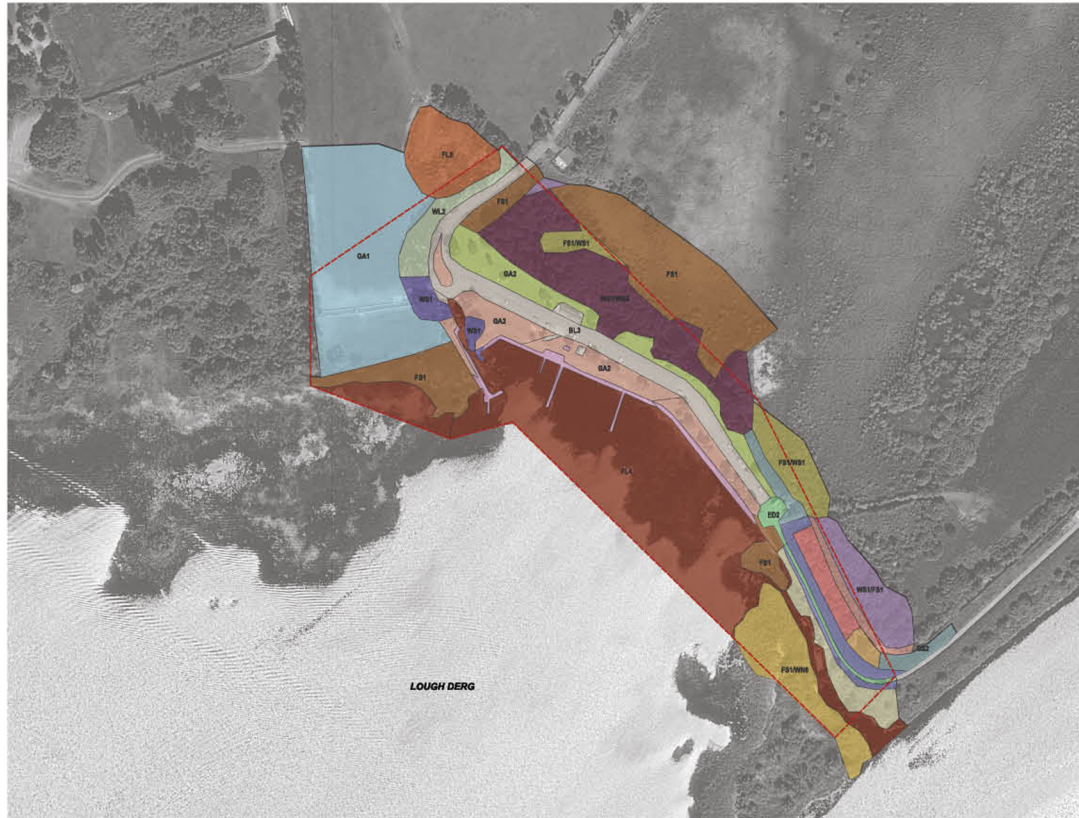
3.1 Habitat GA2 - Amenity Grassland



3.2 Habitat FL4 - Mesotrophic Lake



3.3 Habitat BL3 - Artificial surfaces / GA2 - Amenity Grassland



<p>Base map</p> <ul style="list-style-type: none"> Indicative Study Area <p>Habitats</p> <ul style="list-style-type: none"> FL4 - Mesotrophic lakes FL8 - Other artificial lakes and ponds 	<ul style="list-style-type: none"> FSI - Reed and large sedge swamps FSI/WN6 - Reed and large sedge swamps/Wet willow-older-ash woodland FSI/WS1 - Reed and large sedge swamps/Scrub FSI/WN6 - Scrub/Wet willow-older-ash woodland 	<ul style="list-style-type: none"> WN6/FS1 - Wet willow-older-ash woodlands/Reed and large sedge swamps WS1/FS1 - Scrub/Reed and large sedge swamps WS1/WN6 - Scrub/Wet willow-older-ash woodland 	<ul style="list-style-type: none"> BL3 - Buildings and artificial surfaces GA2 - Amenity grassland (improved) GS2 - Dry meadows and grassy verges GS2/GS4 - Dry meadows and grassy verges/Wet grassland 	<ul style="list-style-type: none"> GS4/GS2 - Wet grassland/Dry meadows and grassy verges WL2 - WL2 treehills WS1/WN6 - Scrub/Wet willow-older-ash woodland BL3 - Buildings and artificial surfaces ED2 - Spoil and bare ground 	<ul style="list-style-type: none"> GA1 - Improved agricultural grassland GA2 - Amenity grassland (improved) WS1 - Scrub
--	--	---	---	--	---

3.4 Habitat Map



3.5 Habitat GA2 - Amenity Grassland



3.6 Habitat FSI - Reed and Large sedge swamps/scrubs



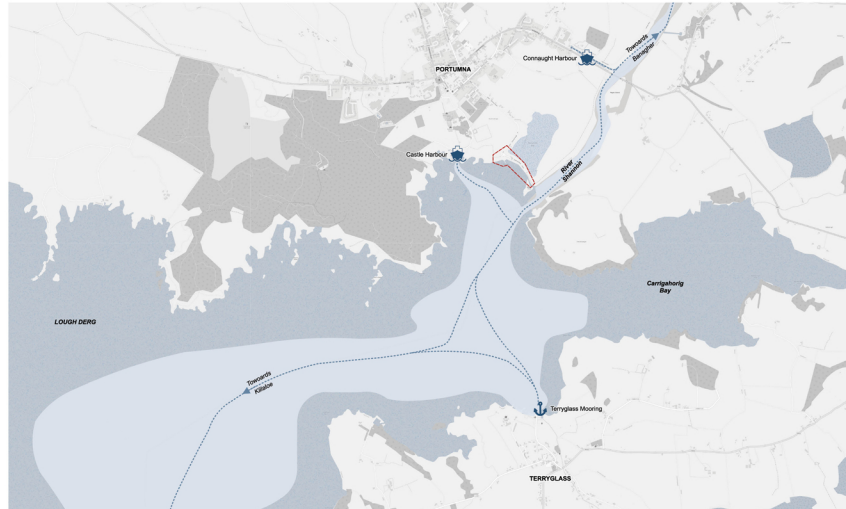
3.7 Habitat WS1/WN6 - Scrub/Wet woodland

Portumna Outdoor Recreation Building & Park

4. Local Tourist Facilities

Base Map

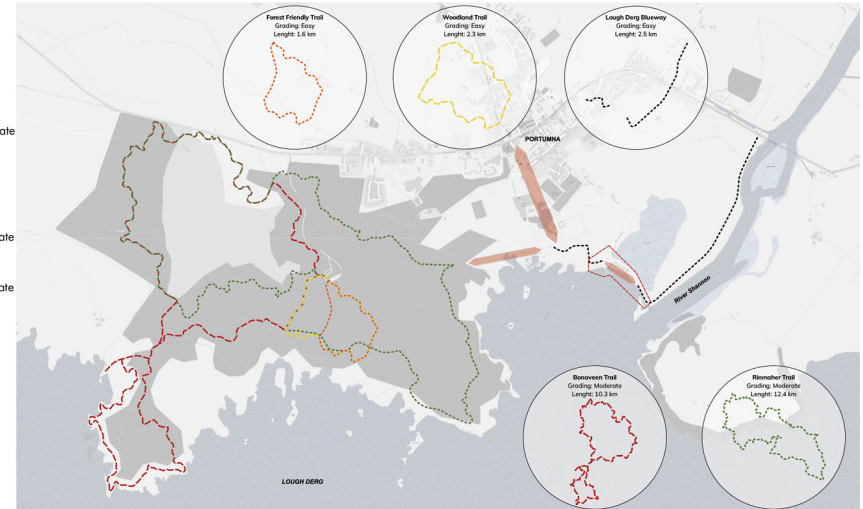
- Study area
- Navigation Route
- Non navigable waters
- Navigation Channel
- Mooring and Boat Hire Service
- Mooring only



4.1 Boating Map

Cultural Heritage

- Study area
- Lough Derg Blueway Grading: Easy
- Bonaveen Trail Grading: Moderate
- Forest Friendly Trail Grading: Easy
- Rinmaher Trail Grading: Moderate
- Woodland Trail Grading: Moderate
- Missing Links

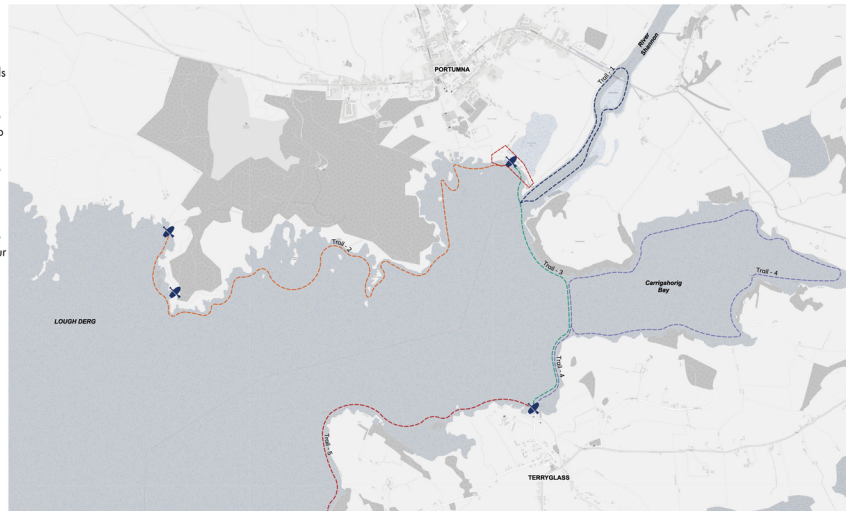


4.2 Land Based Recreation

- Study area
- Blueway Trail Heads

Lough Derg Blueway Trails

- Portumna Water Recreation Park to Hayes Island Loop
- Portumna Water Recreation Park to Portumna Forest Park
- Portumna Water Recreation Park to Terryglass Harbour
- Terryglass to Slevior Bay Loop
- Terryglass to Kilgarvan



4.3 Blueway Paddling Facilities and Routes

Cultural Heritage

- 1 - Portumna Castle
- 2 - Portumna Friary
- 3 - Portumna Community Hall

Natural Heritage

- Portumna Forest Park
- Bird Hides



4.4 Cultural Natural Heritage Map

Portumna Outdoor Recreation Building & Park

5. Comparator Review

Hodson Bay, Co. Roscommon

A developing activity destination that is evolving to become more than an aquapark

- Shows the evolution of a waterbased recreation location
- It is currently the subject of planning for a significant upgrade to provide enhanced public realm, and year round and permanent facilities that will include indoor and outdoor event space.

Bowness-on-Windermere & Lakeside, UK

A small-scale waterside destination offering a variety of activities and ancillary services.

- Strong multi-node system (Bowness–Ambleside–Lakeside)
- Seamless water/land integration
- Works at both tourist and local scale

Ullswater (Glenridding / Pooley Bridge, Lake District)

A quieter, more scattered and landscape-led experience

- Demonstrates low-density clustering
- Strong heritage transport concept (boats as infrastructure)
- Feels less commercial, more experiential

FjordSauna, Flåm & Aurland, Norway

Floating saunas in Norway's fjord landscape.

- Demonstrates how attractive micro-infrastructure can create a destination identity.
- Tourism attractor, popular on social media.
- Year-round use



5.1/2 Inflatable Watersports at Hudson Bay

5.3/5.4 Canoeing and Paddleboarding at Bowness-on-Windermere & Lakeside

5.5/5.6 Canoeing and Boating at Ullswater

5.7/5.8 Floating Saunas in Norway

Portumna Outdoor Recreation Building & Park

6. Precedent Projects

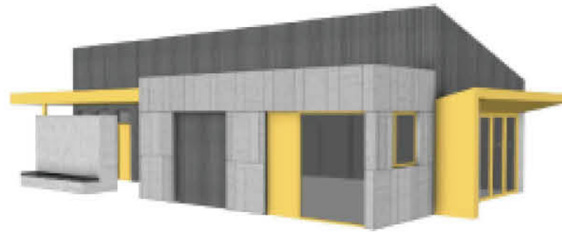
The following are some examples of the types projects previously designed by Place+U

Banagher Marina Masterplan, Co. Offaly.



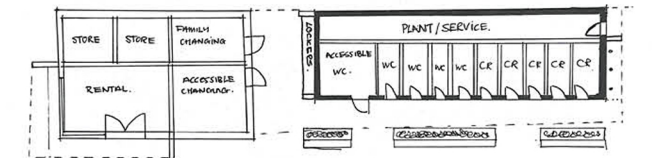
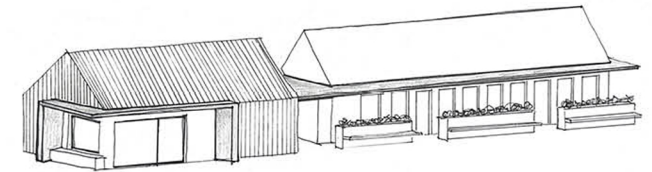
6.1 Banagher Marina Masterplan Renders

Listowel Activity Hub, Co. Kerry



6.2 Listowel Activity Hub Masterplan and Facilities Building

Proposed Building Typology



6.3 Portumna Facilities Building Sketches

Portumna Outdoor Recreation Building & Park

7. Precedent Projects

The following are some examples of the types of interventions that may be incorporated into the design of Portumna Outdoor Recreation Building and Park they are not presented as precise visuals of the space but are similar to the type of design elements to be achieved on the site.



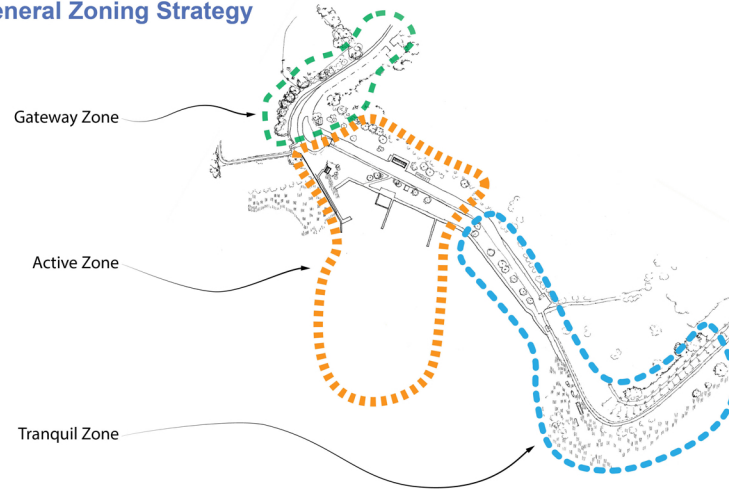
7.1 Precedent Images



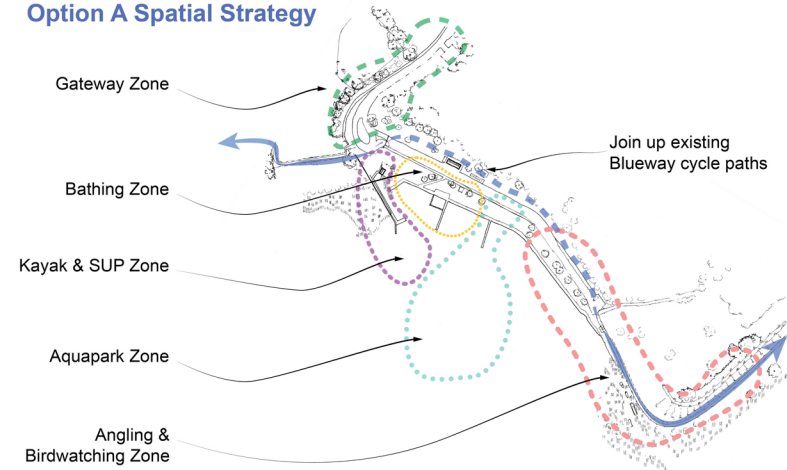
Portumna Outdoor Recreation Building & Park

8. Spatial Plans

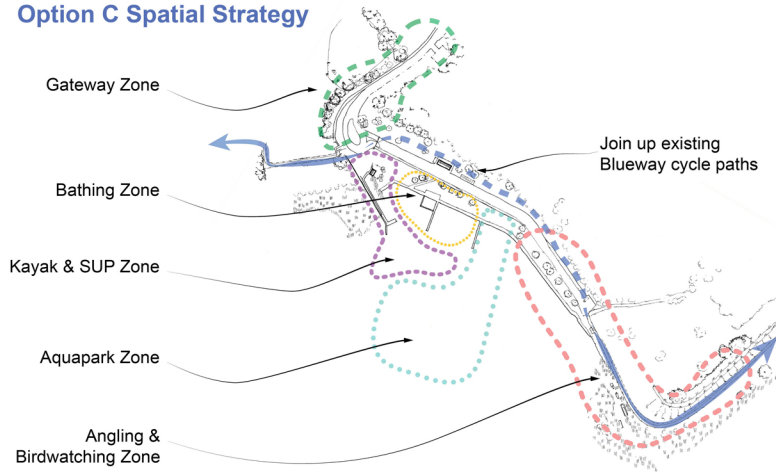
General Zoning Strategy



Option A Spatial Strategy



Option C Spatial Strategy



Option B Spatial Strategy

