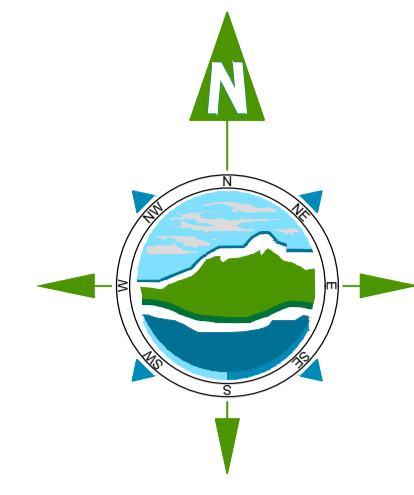
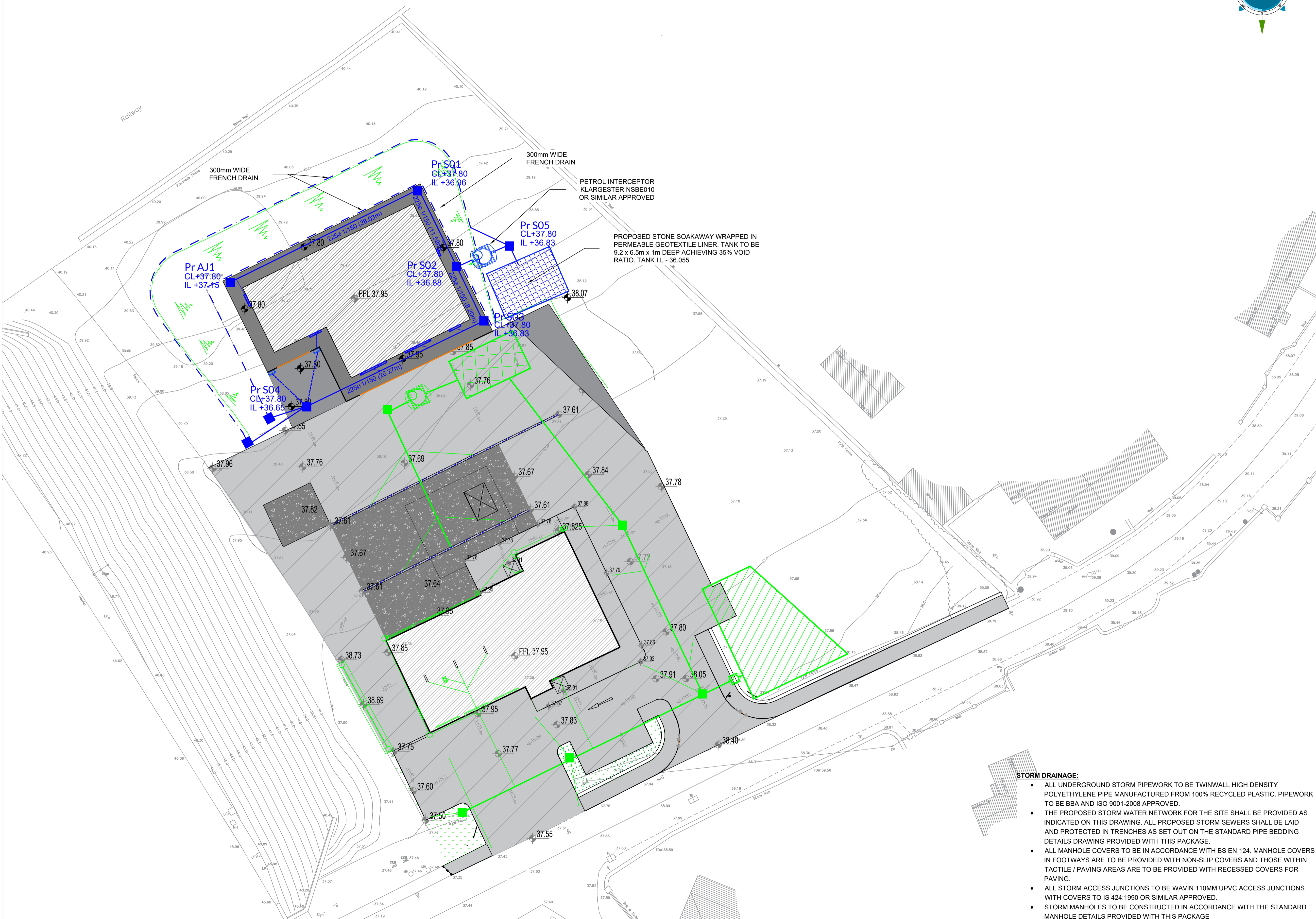


THE INFORMATION ON THIS DRAWING IS TO THE ORDNANCE SURVEY IRELAND ITM COORDINATE SYSTEM



- LEGEND:**
- PROPOSED STORM DRAINAGE NETWORK
 - Pr S02
CL+37.95
IL+36.62
 - PROPOSED 300mm WIDE FRENCH DRAIN
 - EXISTING STORM DRAINAGE NETWORK
 - ACO ROADRAIN CHANNEL WITH D400 GRATING OR SIMILAR APPROVED
 - PROPOSED GULLY LOCATION AND Ø100MM PVC CONNECTION PIPE



Rev	Date	Description	By	Chkd.
P0	26-02-2026	Issue for Planning	CP	SB

Client: Galway County Council

Project: New Brigade Mechanics Workshop At Athenry Fire Station

Title: Proposed Storm Drainage Layout

Scale @ A1: 1:250
 Prepared by: CP Checked by: SB Date: 26-02-2026
 Drawing Status: Planning

TOBIN
 Tel: +353 (0)91 565 211
 Email: info@tobin.ie
 www.tobin.ie

Drawing No.: 12084-2002 Revision: P0

- STORM DRAINAGE:**
- ALL UNDERGROUND STORM PIPEWORK TO BE TWINWALL HIGH DENSITY POLYETHYLENE PIPE MANUFACTURED FROM 100% RECYCLED PLASTIC. PIPEWORK TO BE BBA AND ISO 9001-2008 APPROVED.
 - THE PROPOSED STORM WATER NETWORK FOR THE SITE SHALL BE PROVIDED AS INDICATED ON THIS DRAWING. ALL PROPOSED STORM SEWERS SHALL BE LAID AND PROTECTED IN TRENCHES AS SET OUT ON THE STANDARD PIPE BEDDING DETAILS DRAWING PROVIDED WITH THIS PACKAGE.
 - ALL MANHOLE COVERS TO BE IN ACCORDANCE WITH BS EN 124. MANHOLE COVERS IN FOOTWAYS ARE TO BE PROVIDED WITH NON-SLIP COVERS AND THOSE WITHIN TACTILE / PAVING AREAS ARE TO BE PROVIDED WITH RECESSED COVERS FOR PAVING.
 - ALL STORM ACCESS JUNCTIONS TO BE WAVIN 110MM UPVC ACCESS JUNCTIONS WITH COVERS TO IS 424:1990 OR SIMILAR APPROVED.
 - STORM MANHOLES TO BE CONSTRUCTED IN ACCORDANCE WITH THE STANDARD MANHOLE DETAILS PROVIDED WITH THIS PACKAGE