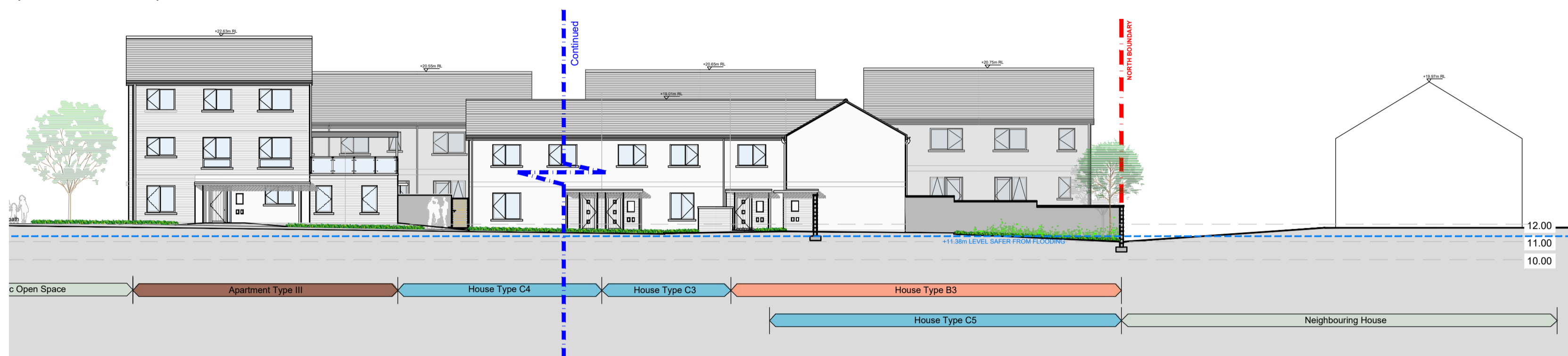


CONTEXT SECTION 5-5
(Scale 1:200)



CONTEXT SECTION 5-5 (Continued)
(Scale 1:200)



CONTEXT SECTION 6-6
(Scale 1:200)



CONTEXT SECTION 6-6 (Continued)
(Scale 1:200)



KEY PLAN
(Not to scale)

11.38m Level, considered safer from flooding by JBA Report (2020)



Rialtas na hÉireann
Government of Ireland

Housing for All

A Updated Layout		WS	12-07-23
Rev	Description	By	Date
		Galway Suite 4 Cloch Mhile, Dublin Road, Galway, H91 V97E E: info@vha.ie www.vha.ie Sligo 3-3 Abbey Street, Abbeyquarter North, Sligo, F91 X160 T: 091 483 934 Dublin 81 Armines Street Dublin 1, D01 N275 T: 071 915 0022 F: 01 876 4600	
© THIS DRAWING IS PROTECTED BY COPYRIGHT AND IS TO BE READ IN CONJUNCTION WITH ALL RELEVANT SPECIFICATIONS AND DRAWINGS. USE ONLY FIGURED DIMENSIONS. DO NOT SCALE OFF THIS DRAWING. IT IS THE CONTRACTOR'S RESPONSIBILITY TO ENSURE COMPLIANCE WITH ALL ASPECTS OF THE CURRENT BUILDING REGULATIONS. IT IS THE CONTRACTOR'S RESPONSIBILITY TO ENSURE COMPLIANCE WITH ALL CONDITIONS IMPOSED BY THE LOCAL PLANNING AUTHORITY.			
Client: Galway County Council		Scale: 1:200 @ A1	
Project: Proposed Housing Development at Baile Chláir, Co. na Gaillimhe		Rev: A	
Drawing Description: Context Sections		Drawing No: 210503-03-009	
Status: Planning	Date: July 2023	Drawn by: WS	Checked by: BF