

BALLINASLOE TOWN CENTRE FIRST PLAN

REPORT APRIL 2026



TOWN TEAM

Conor Johnston
David Finnerty
Graham Bartlett
Joseph Burke
Joseph Staunton
Lyn Donnelly
Martina Flanagan
Patricia Tierney
Sean Fletcher
Sean Kelly
Stephen Kerr

FOREWORD

Ballinasloe has always been a town of welcome, connection, and community spirit. Its streets, squares, and gathering places reflect a proud history of people coming together, and they remain at the heart of daily life today. The Town Centre First Plan gives us the opportunity to build on our assets and strengths while shaping a bright future for our town. It has been guided by the voices of local residents, businesses, schools, and community groups who generously shared their ideas and aspirations. Their input ensures the plan is rooted in local pride and ambition. This plan is about people as much as place – creating a town centre that is vibrant, safe, and inclusive, where everyone feels they belong. Together, we can make Ballinasloe an even better place to live, work, and visit.

- Ballinasloe Town Team



SECTION	TITLE	PAGE
01	INTRODUCTION	04
02	CONTEXT	06
03	ANALYSIS	10
04	YOUR SAY	14
05	TCF PLAN	18
06	NEXT STEPS	34

BALLINASLOE
TOWN TEAM

the **paul hogarth** company



Comhairle Chontae na Gaillimhe
Galway County Council



Lár Bailte ar dTús
Town Centre First



Rialtas na hÉireann
Government of Ireland



Arna chomhchistiú ag
an Aontas Eorpach
Co-funded by the
European Union



Tionól Réigiúnach
An Tuaiscirt & An Iarthair
Northern & Western
Regional Assembly



1. INTRODUCTION

WELCOME TO BALLINASLOE

Ballinasloe, known in Irish as Béal Átha na Sluaighe, is a historic market town of regional significance, located in east County Galway. Renowned for its rich cultural heritage, deeply rooted history, and vibrant community life.

Ballinasloe continues to play a pivotal role as a social, commercial, and civic hub within the wider region. Its strategic positioning along the river, railway line, and motorway further inform its importance.

The town centre is compact and immediately recognisable, distinguished by its unique and historic urban form. At its heart lies the confluence of three key streets—Society Street, Dunlo Street, and Main Street—which all meet at St Michael’s Square, the central gathering point of the town. This well-defined core reflects Ballinasloe’s legacy as a place of exchange, activity, and connection, rooted in centuries of market and fair traditions.

Framing this central hub are two of the town’s most defining natural and civic features. On one side lies the expansive Fair Green, a significant public space that not only provides open green amenity but also continues to host the famed annual Ballinasloe Fair, one of the oldest and largest of its kind in Europe. On the opposite side, the River Suck weaves its way along the town’s edge, lending a serene, blue infrastructure to the landscape and further enriching the town’s sense of place.

Ballinasloe is currently benefiting from investment in both its town centre and surrounding areas, which has informed its selection for the development of a Town Centre First (TCF) Plan. This plan aims to establish a cohesive vision and strategy for the future growth and regeneration of the town centre.

This report outlines the process and work undertaken in developing the Town Centre First Plan, explains the strategy, and identifies the next steps for delivering the proposed and future projects.

In 2024 Galway County Council successfully secured funding from the Northern and Western Regional Assembly through one of Europe’s main Regional Development Funds. THRIVE supports locally developed plans that take an integrated strategic approach to the regeneration of our towns and locally selected projects that assist in creating town centres that function as viable, vibrant, and attractive locations for people to live, work and visit while also functioning as the business, service, social, cultural and recreational hub for the local community.

THRIVE is co-funded by the Government of Ireland and the European Union through the ERDF Northern and Western Regional Programme 2021-27.



ROLE OF THE PLAN

The Ballinasloe Town Centre First Plan outlines a shared vision for the future of the town, shaped by input from the local community, businesses, and key stakeholders.

It acts as a roadmap to guide the collaborative and sustainable growth of Ballinasloe's town centre. The plan identifies strategic objectives and a series of priority projects intended to enhance the town's vibrancy, attract investment, and support both new and existing enterprises.

Designed to be inclusive, adaptable, and forward-looking, the Ballinasloe Town Centre First Plan serves as a non-statutory framework to inform decision-making, secure funding, and coordinate project delivery across public and private sectors.

The plan also emphasises the importance of preserving Ballinasloe's unique heritage and enhancing its public spaces to create a welcoming environment for residents and visitors alike. Themes such as fostering connections between the town's historic streets and buildings, green and blue assets, and community facilities aim to create a focus in the plan to promote social interaction, sustainable transport, and economic resilience. Through collaborative efforts and targeted investments, the Ballinasloe Town Centre First Plan seeks to ensure the town's long-term vitality and quality of life for all who live, work, and visit here.

TOWN CENTRE FIRST POLICY

This Ballinasloe Town Centre First (TCF) Plan has been developed by the Ballinasloe Town Team, in collaboration with Galway County Council, The Paul Hogarth Company, and the people of Ballinasloe, as an action of the Town Centre First Policy.

The Town Centre First policy is a government initiative that aims to prioritise the regeneration and revitalisation of town centres, focusing on making them more attractive, sustainable, and vibrant places to live, work, and visit. Central to this policy are the local Town Teams, made up of community representatives and other key stakeholders and collaborating with direct support from the Town Regeneration Officer within the County Council. The Town Team ensure the plan reflects local priorities and drives community-led regeneration. The voice of local people is at the heart of this policy to enable development of Irish towns and town centres. The following plan is supported by extensive community engagement and provides a framework for current and future projects and funding opportunities.



2. CONTEXT

TOWN CONTEXT

Understanding the town context is a crucial first step in developing an effective Town Centre First Plan.

By examining the current social, economic, historical, and planning landscape, this section provides insight into what the town is like today through its statistics, the factors that have shaped its development over time, and the planning that will influence its future growth. This deeper understanding ensures that the TCF plan is grounded in reality and aligns with national, regional, and local strategies, enabling more informed decision-making and targeted interventions that reflect Ballinasloe’s unique needs and opportunities. The understanding of the town is further supported by the town analysis in the next section.

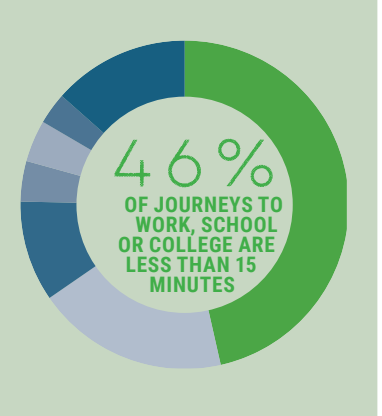
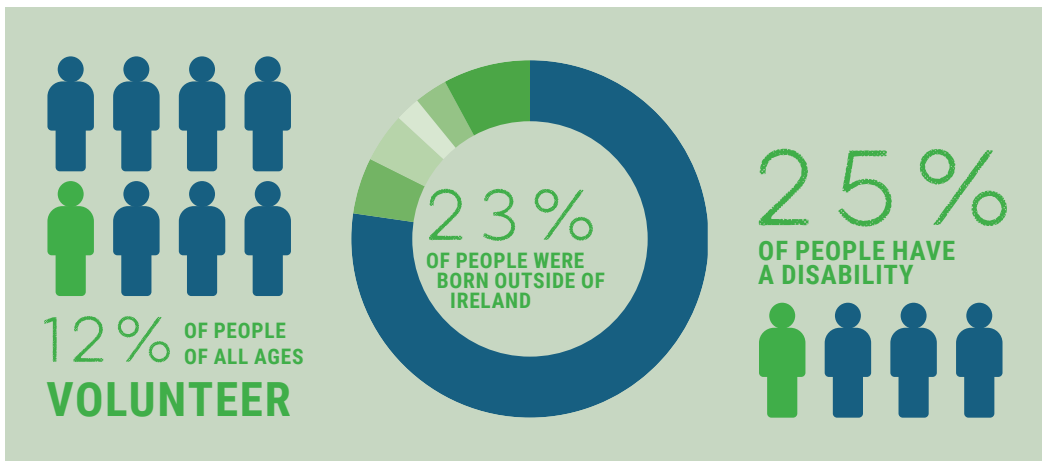
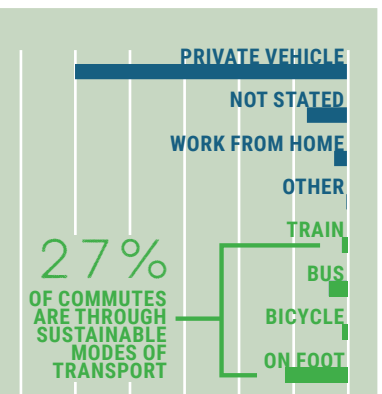
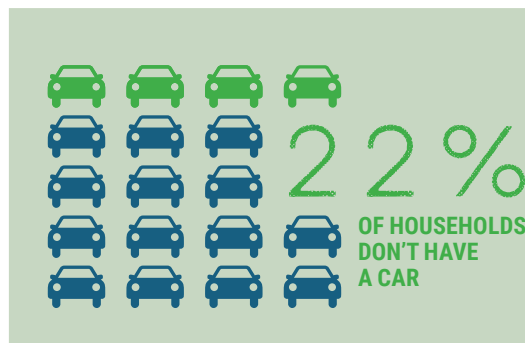
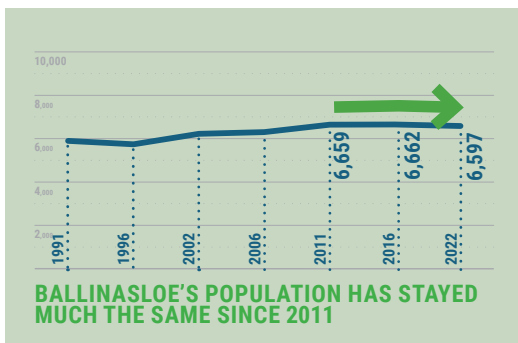
SOCIO-ECONOMIC PROFILE

According to the 2022 Census, Ballinasloe’s population stands at 6,597, nearly unchanged from its 2011 level, indicating its demographic stability over the past decade, despite a national increase of 14%. During that same period of time, the county has seen substantial improvement in its employment, as the rate of unemployment has fallen to 7%, from 12% in 2016, and 18% in 2011, from which Ballinasloe has also benefited. The gender balance in Ballinasloe is fairly even, with 3,145 males and 3,452 females, and a broad age profile: 1,673 aged 0–17, 3,677 aged 18–64, and 1,247 aged 65+.

About 12% of residents participate in volunteering activities, reflecting an active community. Similarly, reflective of its growing diversity as a town and the importance of community, roughly 23% of Ballinasloe residents were born outside Ireland (1,536 individuals).

The importance planning for inclusivity and accessibility is also underscored in Ballinasloe’s social profile, as the percentage of residents with disabilities is approximately 25% (slightly above the national average).

In terms of transport and movement, a majority of commutes to work, school, or college take less than 30 minutes (72%, of which 46% less than 15 minutes). As such, the town has strong potential for a focus on sustainable modes of transport. Currently, 27% of journeys are already made by public transport, cycling or walking. These patterns reflect the local access and opportunities for jobs and education. Approximately 22% of households have no access to a car, making local access and alternative modes of transport key to that demographic.



REGIONAL CONTEXT

Ballinasloe is a prominent regional centre in the eastern part of County Galway, with its hinterland extending into neighbouring County Roscommon. This strategic location places it at the crossroads of two counties, enhancing its role as a service and commercial hub for the surrounding rural areas, but has also put it at risk of being overlooked in the past.

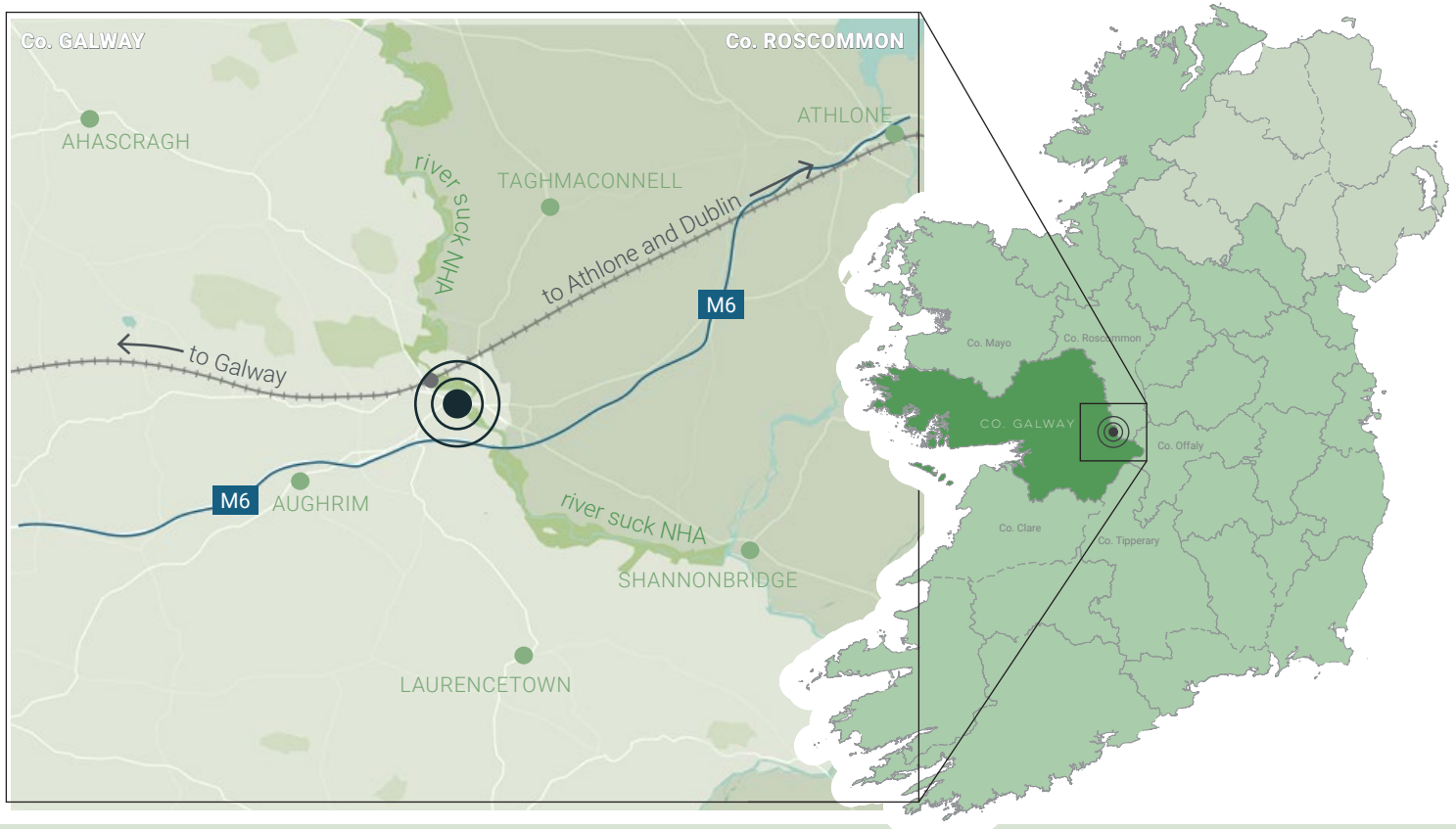
The town benefits significantly from its proximity to the M6 motorway, which provides rapid and direct access to both Galway City, Dublin, and the wider country, making it attractive for commuters, logistics, and business development. The town is also well connected by local and regional bus services. In addition to road connectivity, Ballinasloe is served by a station on the main Galway–Dublin rail line, offering frequent passenger services that further integrate the town into national transport networks.

Taking a broader look, the town also benefits from proximity to Shannon Airport for international travel.

Ballinasloe has historical and functional ties to water-based transport, with its marina and location along the River Suck (part of the greater Shannon river network). Currently the river provides largely leisure access to Ireland’s inland waterways. This contributes to the town’s appeal as a tourism and recreation destination.

Its close proximity to other major urban centres, particularly Athlone, supports the community’s access to additional shops and facilities. Ballinasloe provides a similar role to nearby smaller settlements, which rely on the town’s facilities and amenities. All of these further strengthens its regional importance.

Overall, Ballinasloe’s strategic location and multimodal connectivity underpin its role as a dynamic link between the west and midlands of Ireland.



2. CONTEXT

TOWN HISTORY

Ballinasloe traces its origins to an ancient fording point on the River Suck: Its Irish name, Béal Átha na Sluaghe, literally means “mouth of the ford of the hostings”, signaling its role as a gathering place since at least the Bronze Age.

The period between the 12th and 14th centuries saw the creation of significant settlements and fortifications to secure this strategic crossing. Some castle structures can still be found on Bridge St.

Throughout the 18th and 19th centuries, Ballinasloe flourished under the influence of the Trench family, who shaped its layout, architecture, and growth as a market town, around the Garbally Demesne and Estate. During this time, the familiar street pattern and many of the grand limestone buildings were established and remain today.

A defining feature of Ballinasloe’s heritage is its October Horse Fair, one of Europe’s oldest and largest traditional fairs, dating back to at least the mid-18th century. By the early 19th century, it drew tens of thousands of cattle, sheep, and horses and was acclaimed to be the largest of its kind in Europe, leaving a social and cultural impression on the town that still resonates today. The Fair Green space still prominently sits in the centre of the town and is a unique green asset for Ballinasloe.

The addition of the railway in 1851 further cemented Ballinasloe’s status as a regional nexus. Before that, the River Suck played an important role for commercial transport, though its use focuses on leisure currently. Historical maps show that the river and river basin used to occupy a much bigger area in Ballinasloe, highlighting the town’s historical relationship with the waterway.

However, this proximity to the river, combined with the some low-lying topography in the area, and threats related to climate change, contributes to a risk of flooding in the town centre. Flood events have occurred periodically and are a continuing concern for urban planning and infrastructure development in the region.

1830s
Historic Map

**GARBALLY
DEMESNE**

**FAIR
GREEN**

**TOWN
CENTRE**

**RIVER
SUCK**

**BALLINASLOE
CASTLE**

**ST BRIGID’S
HOSPITAL**



POLICY CONTEXT

The Ballinasloe Town Centre First Plan is a non-statutory document that needs to align with a number of local, regional, and national planning documents, in order to be successful.

Project Ireland 2040 prioritises the wellbeing of people, regardless of location or background. Wellbeing, equality and opportunity represent the core, interdependent themes of the project. The TCF Plan will be developed with these themes in mind, alongside the objective of the project; providing a comprehensive infrastructure for people to flourish, resulting in a better society. The strategic outcomes are based on growth, accessibility, strengthened rural economies and communities, sustainable mobility, a strong economy, connectivity, heritage, natural resources and access to childcare, education and health services.

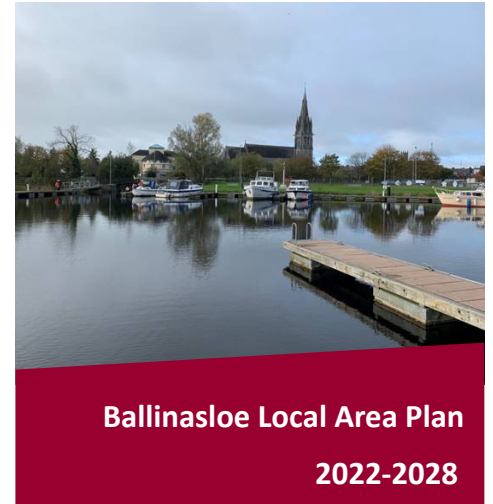
Sustainable Development Goals must be central to the TCF Plan's approach, projects, and actions in response to the ongoing climate crisis. These goals, which focus on reducing environmental impact and sustainable development, align with both local and national policy and will support the town in building a more sustainable future.

The **Regional Spatial and Economic Strategy (RSES)** supports sustainable growth in County Galway, with a particular focus on key towns like Ballinasloe, also acknowledged for its historic status as the County Town. It promotes compact development, improved transport links, and enhanced infrastructure to support population and economic growth across the county. The strategy encourages investment in sectors such as agri-tech, healthcare, and renewable energy, aiming to boost employment and regional resilience. Ballinasloe is identified as a strategic location for development, benefiting from its connectivity and potential as a hub for enterprise and services in the wider region.

The **Roscommon County Development Plan 2022–2028** lays out a strategic, holistic vision for sustainable physical, social, cultural, and economic development across County Roscommon. Though Ballinasloe Town Centre lies just over the county border in Galway, it is part of the broader town context, which straddles both Roscommon and East Galway. As such, the plan's policies, particularly around inclusive housing, sustainable infrastructure, and connectivity, indirectly shape development patterns, growth management, and collaboration with Ballinasloe.

The **Galway County Development Plan 2022-2028** sets out a range of proposed policy objectives with supporting narrative for development in County Galway. In line with the RSES, Ballinasloe is identified as a key town within the county and the town is to be a driver of regional and economic growth. A key future priority is: *“realising the town’s potential as a ‘County Town’, ensuring a balance of development in the town centre of Ballinasloe, and providing for compact growth and brownfield development, revitalising Dunlo Street, Market Square, Society Street and Main Street, and to reduce vacancies and support the vitality and vibrancy of these core shopping streets/side streets and the town centre.”* Broader themes in the Plan include diverse and inclusive housing development, high quality placemaking and urban living, and sustainable development.

The **Ballinasloe Local Area Plan 2022-2028** is a statutory document for Ballinasloe Town, and is accompanied by a local transport plan. Key themes include addressing climate threats, enhancing regional location, providing universal access, encouraging town centre regeneration, improving local connectivity, and supporting residential development (including infill development). The plan sets out the need for; *“a common vision ... that provides sustainable compact growth, regeneration and enhancement in Ballinasloe town”.*



3. ANALYSIS

TOWN ANALYSIS

A thorough and detailed understanding of Ballinasloe underpins this plan, ensuring that consultation outcomes and workshop discussions are closely aligned with the distinct context and features of the town. To achieve this, an in-depth analysis focusing on Ballinasloe's town centre and its wider area, was conducted at the outset of the process.

This analysis focused on key themes including the streetscape, green and blue assets, building uses, and ongoing development within the town. By examining these areas in detail, the analysis identified both the strengths and challenges facing Ballinasloe today. This baseline has guided each stage of the plan's development, providing a solid evidence base to inform the proposals and strategic priorities moving forward.

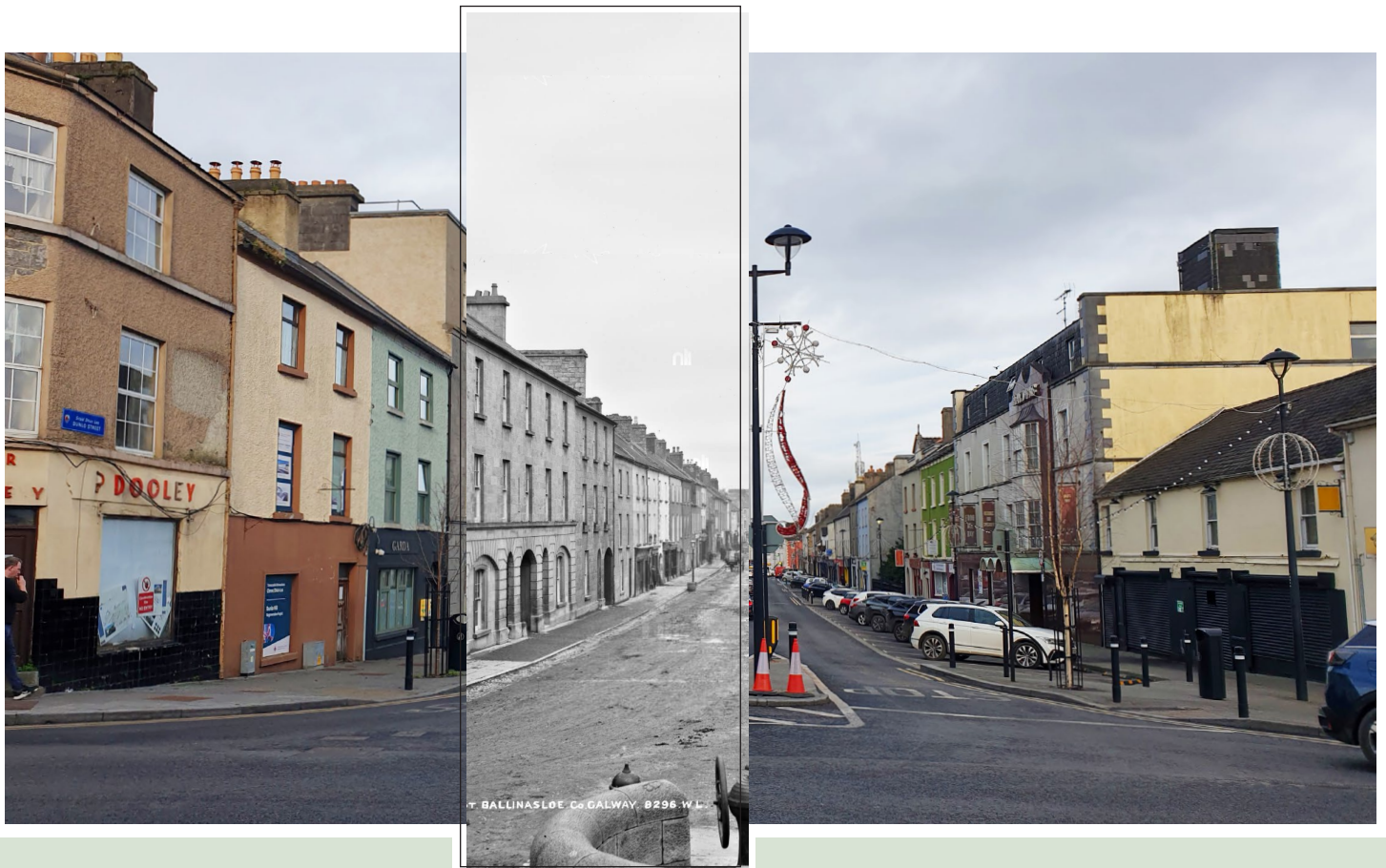
STREETSCAPE

Ballinasloe's streetscape is distinctive, featuring a unique and recognisable street pattern laid out originally during the late 18th and early 19th centuries under the guidance of the Trench family. This planned layout includes broad, formal streets like Society and Dunlo Streets, lined with many Late Georgian and Victorian facades that still exist today and contribute to the town's architectural character.

Woven throughout the town centre are numerous historic laneways, offering valuable pedestrian connections that link main thoroughfares to hidden backlands and heritage structures, and provide access all the way to the Marina and River Suck. These laneways not only reinforce the historic grain and permeability of the town, but also present opportunities to enhance walkability, placemaking, and exploration opportunities. However, some of these routes can feel unsafe or poorly overlooked, which can discourage their use, particularly after dark.

In recent years, significant investment in public realm and building frontage improvements have elevated both the quality and accessibility of the streetscape in central Ballinasloe, creating a more attractive and welcoming environment. However, a persistent dominance of the car over pedestrians and cyclists, illustrated by heavy railings around the town centre roundabout, leave room for further improvement.

The Square in Ballinasloe serves as a central focal point of the streetscape. Whilst the space is primarily used and designed for parking, it occasionally provides for temporary uses such as markets, pop-up events, and community gatherings. These events inject vibrancy and life into the town centre. The square space is framed by distinctive landmarks: the church spire at one end and the iconic 'Horse and Handler' statue at the opposite. This combination of functionality and character makes the Square a vital and adaptable heart of Ballinasloe's town centre.



BLUE & GREEN ASSETS

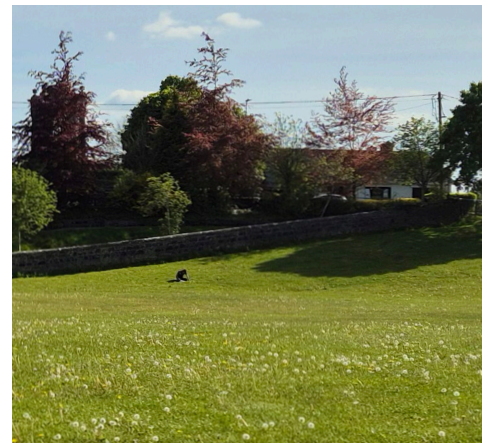
Ballinasloe is enriched by its blue and green assets, which play an important role in shaping the town’s character and recreational opportunities. The River Suck winds around the town centre, providing a natural boundary and scenic waterway that has long connected the community to its environment. Both the river itself, the Slí na hAbhainn park, and the nearby marina offer visual and/ or physical access to the water, currently supporting activities like fishing, boating, and riverside walks at a small scale. The Marina provides twenty berths for local and visiting boats. The River Suck was also a popular spot for swimming, particularly near Bridge Street.

However, Ballinasloe’s proximity to the River Suck also brings with it a notable risk of flooding. Flood zones have been identified around key sections of the town centre and surrounding neighbourhoods, highlighting areas vulnerable to river overflow during heavy rainfall or storm events.

The town’s most significant green asset is the the town’s Fair Green, which stands out as a its size and central location. This area has cultural importance, historically serving as the site of Ballinasloe’s famous Horse Fair and various community events, as previously mentioned.

Despite its potential as a gathering place, the Fair Green sees limited use in everyday life, with much of the space remaining underutilised outside of major events. Its large scale and centrality present a valuable opportunity for future enhancement to better serve the town’s residents and visitors.

Together, the river and the Fair Green represent vital blue and green assets that contribute to Ballinasloe’s unique sense of place. While they offer clear cultural and recreational value, there is room to improve how these spaces engage with the community on a daily basis, strengthening connections between people and nature within the town.



3. ANALYSIS

TOWN CENTRE BUILDINGS

Ballinasloe benefits from many public and private community facilities and amenities. With the general hospital, library, two enterprise hubs, churches, several schools, sports organisations and recreation centres, along with several thriving shopping streets, it is well provided for in many aspects of daily living. These amenities serve a broad hinterland across east Galway and parts of Roscommon, reinforcing Ballinasloe’s role as a regional service centre.

A defining characteristic of the town is its rich built heritage, with many of its key facilities housed in the limestone buildings that reflect Ballinasloe’s architectural legacy. Structures such as the library, courthouse, former Canal buildings, and many more, contribute not only to the town’s functionality but also to its historic and cultural identity. These landmark buildings give the town a strong sense of place and pride.

While Ballinasloe has a relatively low vacancy rate compared to similar towns, many of the buildings that are currently vacant stand out visually and once played prominent roles in the life of the town. At the time of writing, these include St Brigid’s Hospital, Hayden’s Hotel, the Presbyterian Church on Society St, as well as other buildings that occupy key positions in the townscape. The lack of residential units above the shopfronts is similarly very visible in the town centre, significantly reducing the amount of town centre residents and its vibrancy as a result. Overall, the town’s vacancy has a noticeable impact on the town centre’s appearance. However, their architectural value and strong connection to the local community present major opportunities for adaptive reuse and regeneration.



ONGOING DEVELOPMENT

At the time of writing, the Town Centre First Plan has the opportunity to align with several key projects that are underway in Ballinasloe, to further benefit the town as a whole and continue with the current positive momentum.

The **Flood Relief Scheme** is progressing through its planning stages, aiming to enhance flood protection for the town.

The **Linear River Park** project is in development, creating accessible green spaces along the River Suck to promote outdoor activities and biodiversity.

The redevelopment and renovation of **Dooley's corner** is also underway, which will provide the town centre with a new community space and adjacent residential development in the town centre.

The **Pollboy Eco Park** initiative is transforming a former landfill site into a public park featuring woodlands, wetlands, and recreational facilities.

The **Active Travel Scheme** is being implemented to improve walking and cycling infrastructure, including footpath enhancements and safer crossings.

Similarly, Ballinasloe is being considered as part of the new **Greenway**, with potential for Town Centre and Pollboy connections.

Opportunities for smaller cultural, environmental, and other initiatives are also ongoing, such as the **Heritage Trail** project, which will highlight points of interest in the attractive streetscape that forms the Ballinasloe Architectural Conservation Area. A **Playground Grant** has also been secured to upgrade existing play facilities, as well as funding for an **upgraded Toilet Block** adjacent to St. Michael's Church on the Square. Furthermore, the **Swift Counts** project is engaging the community in monitoring local bird populations, fostering environmental awareness and participation.

It will be vital that these investments are strategically planned and coordinated with one another to ensure they contribute to Ballinasloe's overall growth.

SCOT ANALYSIS

At the outset of developing this plan, the Town Team completed the following SCOT Analysis of Ballinasloe. This analysis identified key Strengths, Challenges, Opportunities, and Threats for Ballinasloe.

STRENGTHS

- Fair Green - in town centre
- Town's location in Country
- People & Community
 - Community Groups
 - Active engagement
- Excellent facilities
 - 3 Hotels
 - Bars & Restaurants & retail
 - Train station and buses
 - National/ local agencies
- Sports:
 - Exceptional Sports facilities/ infrastructure (running track floodlit pitches etc)
 - Large variety of active sports groups
 - Currently over 19 international athletes
- Regional Hospital (Portiuncula)
- Horse Fair & Feile Cheoil Larry Reynolds Festivals
- Education:
 - High education level / continued education
 - High standard of Secondary & primary Schools
 - Third level education nearby
 - Local college
- 2 Enterprise centres
- On the greenway, blueway, motorway, railways, bus routes and close to Shannon Airport
- Young people returning
- Ballinasloe Life Magazine
- Strong local development Group (BACD)

CHALLENGES

- vacant buildings
- Loss of industry
- Housing for young people
 - property not available
- Availability of skilled workforce
- Social Services
 - funding available, but no premises •
- No community centre •
- Split between counties
 - politically and geographically •
- Integration of communities / getting involved
 - e.g. in sports, social
- Communication
 - getting people engaged in events/ plans/ activities particularly marginalised groups

OPPORTUNITIES

- The River Suck
- Community centre facility
- Tourism
- Utilising fair green year-round
- Buildings for sale/ St Brigid's, Garbally Park
- Arts, heritage, & culture centre
- Space above the shops •
- Walking trails and local parks
- Greenway Athlone - Galway
- TCF Process to provide positivity
- Opportunities for funding across counties (Roscommon and Galway to work together)
- Ballinasloe Life Magazine

THREATS

- Emigration
- Negativity/ perception
 - Local blame
- Not enough focus on new entrepreneurs
- Local /National media of the town
- Lack of infrastructure and services - GP, etc.
- Climate Change/ Flooding
- Downgrading of hospital services

4. YOUR SAY

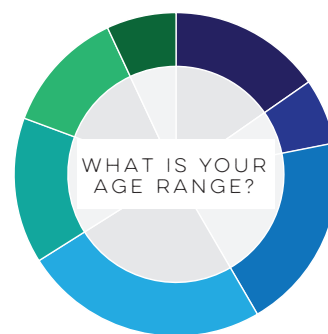
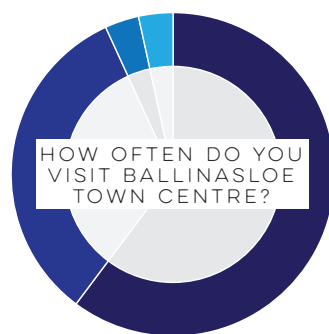
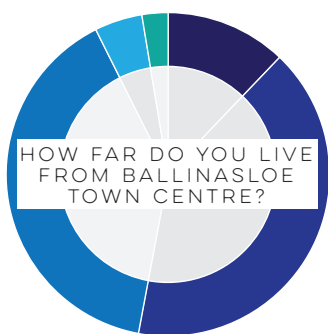
CONSULTATION PROCESS

The Town Centre First Plan was developed through a series of Town Team workshops, two public consultations, and further stakeholder engagement. This section presents the key findings from the first public consultation.

The first consultation collected the town's thoughts and ideas over a 3-week consultation period, including online and paper surveys, and an in-person event at the Ballinasloe Enterprise Hub. It focused on understanding the community's thoughts about Ballinasloe today, as well as their ideas for the future. The consultation collected 279 responses during January and February 2025.

279
RESPONSES
DURING THE 1ST
CONSULTATION

368
RESPONSES
DURING THE 2ND
CONSULTATION



- in the town centre - 12%
- within 15 minute walk - 41%
- within 15 minute drive - 40%
- within the wider county - 5%
- elsewhere in Ireland - 3%

- I visit daily - 60%
- I visit weekly - 33%
- I visit monthly - 3%
- I rarely visit - 3%

- 0-18 - 15%
- 19-29 - 7%
- 30-39 - 20%
- 40-49 - 25%
- 50-59 - 15%
- 60-69 - 12%
- 70+ - 7%

DEMOGRAPHICS

The demographics showed that most of the responses to the first consultation survey came from local people, most of which live within a 15-minute drive and visit the town centre weekly or daily.

The consultation also engaged with people of different ages, including an additional consultation workshop in school to further engage with Ballinasloe's young voices about the future of their town.

WHAT DO YOU LIKE?

The town's many assets, including its streetscape, shops, amenities, and public spaces were all highlighted as great contributors to the town centre's appearance and their positive impression of the town. The Fair Green was particularly well-liked and stands out as an important space in the town.

Additionally, the town and its locals were described as welcoming and friendly, highlighting Ballinasloe's community spirit.

"Everything one needs can be found in the town, motorway access, potential for development."

"People, amenities, convenience"

"I like all the little shops here and there"

"Three streets connected, traffic both ways."

"The many historic buildings - town hall, library etc. The potential of the river, if access was opened up. Fair Green has huge potential."

"The town square with a tripod of streets leading out from it. The meandering river - which should be utilised more. Building facades i.e. upper floors windows etc."

"Community spirit. Old style buildings."

"It looks very welcoming. The food places are very good quality. The church is beautiful."

"Compact town. Plenty of parking. Friendly locals"

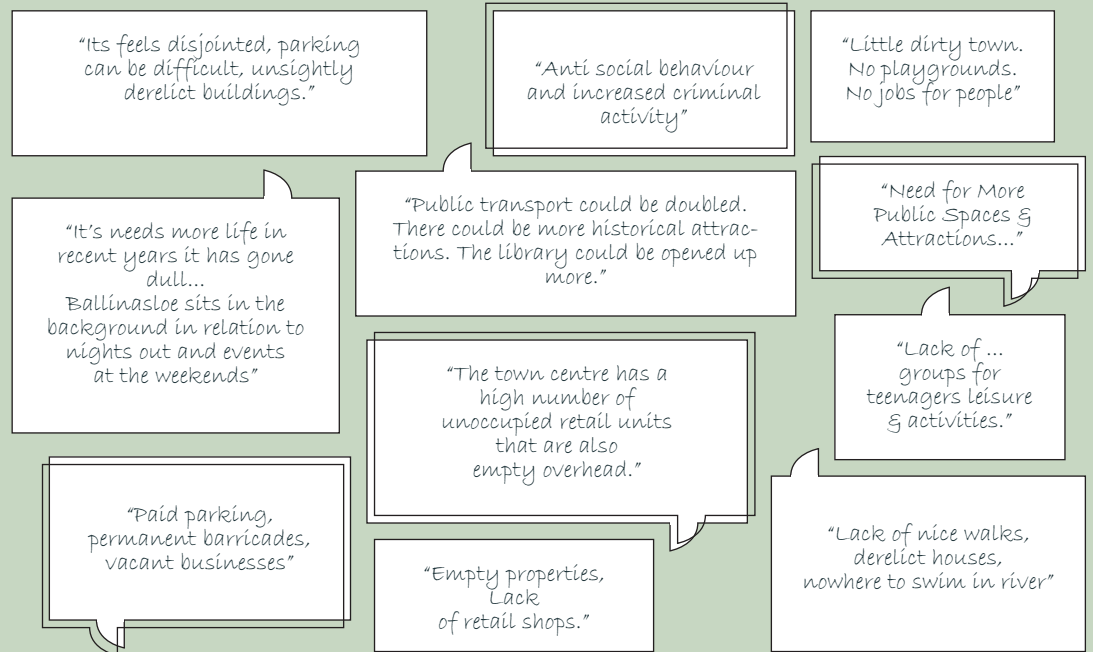
"Space for public gatherings, public art, architectural landscape"

"Marina, Pedestrian Crossings and Fair Green"

WHAT DO YOU DISLIKE?

Responses highlighted opportunities to improve the vibrancy and character of the town, as many expressed that the town centre does not provide enough activities and things-to-do, particularly for evenings and younger residents.

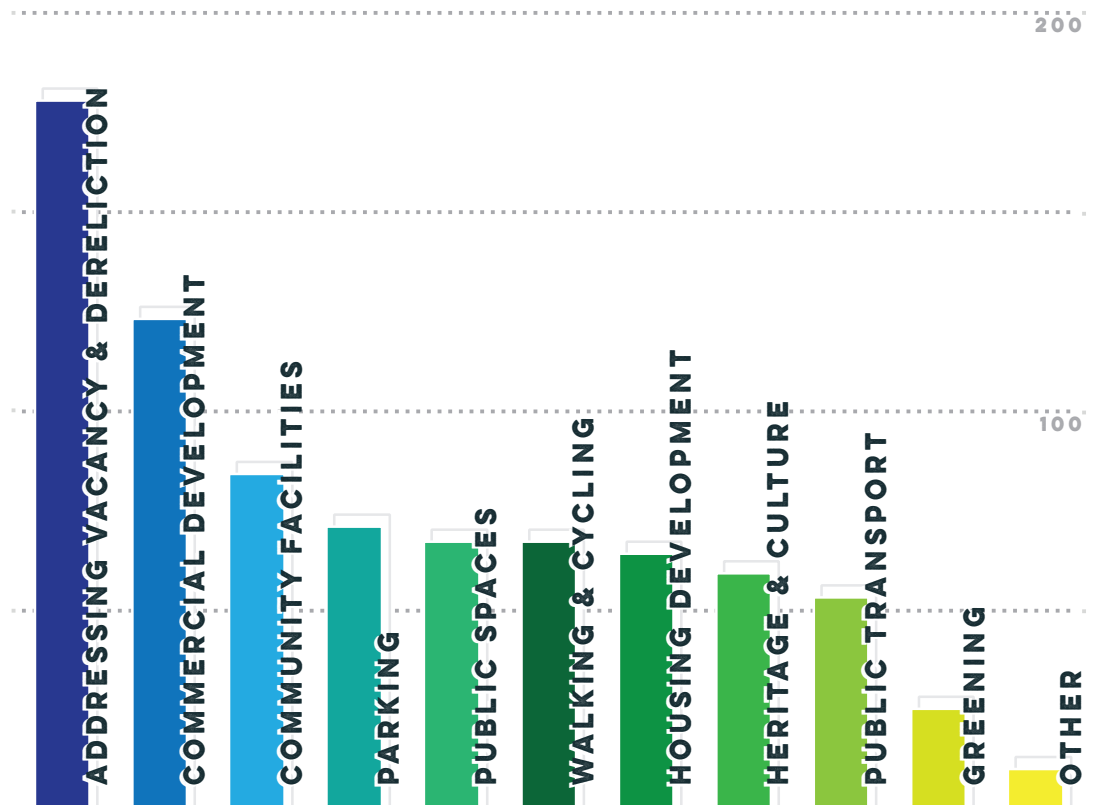
Improvements to a sense of safety and reducing anti-social behaviour were also highlighted as a key themes for the future development of Ballinasloe.



TOP PRIORITY

The top priority of the public, asked as a multiple-choice, was addressing vacancy and dereliction. When elaborating in further comments and ideas, the discussion around vacancy is largely focused on a number of key buildings and opportunities, including: Dooley's Corner, Hayden's Hotel, St Brigid's Hospital, and over-shop residential living in the Town Centre.

Respondents also wanted to continue to see the overall development of the town's commercial and businesses opportunities, community facilities, and its wider infrastructure.



4. YOUR SAY

Fondest memory

Ballinasloe is a town with a unique history and an engaged community. Its annual fair and town centre play a big role in its residents' lives.

As part of the public consultation, respondents were invited to share some of their fondest memories of their town centre. What stood out is that many of these memories were of the people and activities that contribute to a vibrant town centre.

The Town Centre First Plan should aim to support the further development of a town that engages its residents and creates vibrancy, excitement, and more memories.

"Spending time with old childhood friends in the leisure centres and also enjoying a few pints in the towns pubs."

"I came to Ballinasloe in 1980 to work. It was then a thriving town with a great selection of shops, wonderful dining options including Hayden's Hotel, nightly entertainment, a great social scene, good sporting and community activities with a strong arts scene. In fact the town was ahead of its time then and the envy of other similar sized towns. Times change and business opportunities change but the memories of those times remain. Good luck"

"I grew up outside town but went to secondary school there and worked locally after school. The town was home to workers in the factories, hospitals etc and most buildings had the owners or workers living over the business. We had 2 cinemas, dancing every Sunday night in the Emerald. It was a great town to grow up near. I still come in 2 or 3 times a week."

"My fondest memories always fall into the October fair, going with friends and family. Always a time to enjoy and let loose. The people who work at toffs are cheeky and well humoured - they have always either sped up the rides or made them longer if I or anyone else seemed to get scared. Very funny to experience."

"The fair green as a child with my dad buying my first pony!"



TOWN TEAM WORKSHOPS

Set up at the outset of the Town Centre First Process, the Town Team are representatives from the Ballinasloe community, including local residents, community leaders, members of voluntary groups, and business owners.

Over the course of the process, they engaged in a range of workshops to shape the plan through their local knowledge and understanding of the community's needs and priorities. The team's diversity and ongoing engagement with the wider community helped ensure a wide range of perspective were considered during the process. The workshops explored key themes such as the town identity, opportunities for growth, and barriers to accessibility and vibrancy. Key exercises included the SCOT analysis, Visioning exercises, and the development of the draft projects, based on a shared understanding of the results from the public consultations.

FURTHER CONSULTATION

The engagement process involved a wide range of activities, including public consultations, school visits, stakeholder discussions, and town team workshops.

This collaborative approach was essential to grounding the plan in local insight and ensuring it genuinely reflected the community's aspirations. It fostered open dialogue, mutual understanding, and created space for meaningful conversations about Ballinasloe. Engagement with the students of 'Ardcoil Mhuire Ballinasloe', and the Town Square event were particular highlights for their diverse and insightful ideas. This process has laid a strong foundation for continued community support as the projects progress from concept to implementation.

Ongoing collaboration, engagement, and communication will continue to be vital to the successful delivery of the Plan.



5. TCF PLAN

THE VISION:

“BALLINASLOE EMBRACES ITS DISTINCTIVE CHARACTER AND HERITAGE, AS A WELCOMING, SAFE, AND VIBRANT PLACE **FOR EVERYONE.**”

OBJECTIVE 1

MAKING THE MOST OF BALLINASLOE'S WONDERFUL AND DIVERSE ASSETS

OBJECTIVE 2

CELEBRATING THE TOWN'S IDENTITY AND ENVISIONING OUR FUTURE

OBJECTIVE 3

CREATING A SAFE AND INCLUSIVE TOWN CENTRE TO LIVE IN, WORK IN, AND VISIT

The Plan sets out a Vision, Objectives and Projects to guide Ballinasloe's future development and regeneration.

The Vision outlines a shared long-term goal for Ballinasloe. It builds on the town's strengths and opportunities, as a framework that future proposals use to align with the community's ambitions.

The Objectives begin to describe how the Vision can be achieved through practical steps. They identify key areas of focus and provide direction for action, helping to shape priorities and inform decisions.

The projects included in this Plan reflect and support the Vision and Objectives to achieve Ballinasloe's future and ambition.

PROJECTS

- a. FAIR GREEN
- b. RIVER SUCK
- c. THE SQUARE
- d. BALLINASLOE STORIES

- e. VACANT BUILDINGS
- f. HEALTHY STREETS
- g. TOWN CENTRE NEIGHBOURHOOD

PROJECTS



THE PLAN:



- a FAIR GREEN
- b RIVER SUCK
- c THE SQUARE
- d BALLINASLOE STORIES
- e VACANT BUILDINGS
- f HEALTHY STREETS
- g TOWN CENTRE NEIGHBOURHOOD

The Plan consists of 7 high-level projects, that reflect the town's wants and needs. They are supported by specific actions to be found in the Action Plan and will all be subject of detailed consultation and community input at the delivery stage.

Future opportunities and initiatives should continue to support and revitalise Ballinasloe's development by reflecting the Vision and the Objectives of this Plan.

5. TCF PLAN

a. PROJECT: FAIR GREEN

The **FAIR GREEN** will enhance the town’s animation through special and exciting events and reimagine itself as a space designed for play and other everyday uses for everyone.

This project proposes the comprehensive redesign of the Fair Green, one of the town centre’s key green spaces, with the goal of transforming it into an inclusive, accessible, and vibrant public space. Ballinasloe is fortunate to have such a large and unique green space in its centre. The space presents a major opportunity to inject further investment and vitality into the town centre. The vision is to create a place that serves the everyday needs of the community while also functioning as a flexible venue for events of all scales, most notably Ballinasloe’s renowned Horse Fair and Festival. The project seeks to ensure that the space is safe, welcoming, and inclusive for people of all ages and abilities throughout the year. The project aims to unlock the full potential of the site as a valuable community space.

A central feature of the redesign will be its flexibility, and to support a diverse range of events while offering everyday uses for residents and visitors alike. These could include informal seating and meeting areas, opportunities for play and sports, spaces for small-scale pop-ups, routes for walking and cycling, and should all take place in a biodiverse landscape.

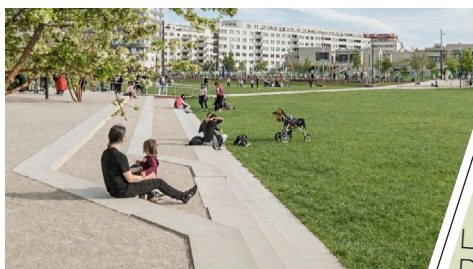
The implementation of the project should be phased, allowing the first development to happen faster, supporting frequent maintenance, testing of key features, and encouraging high quality design and delivery. The process should be underpinned by a strong focus on collaboration with the community, council, local stakeholders, community groups, and event organisers.



In the short term, work should focus on enhancing the existing space by boosting its vibrancy and increasing year-round use. This includes creating a coordinated events calendar, adding more events, and investing in supporting infrastructure to enable regular use.

In the medium term, a masterplan for the Fair Green and its surroundings should be developed through further community engagement and collaboration, setting out a framework for the long-term vision and guiding future investment. This would be followed by phased delivery of landscape improvements, ensuring the space meets community needs now and into the future.

In the longer term, and as opportunities arise, the project also supports appropriate redevelopment of the adjacent former library and civic centre block. This would ensure the strategic town centre site is developed at the right scale and with uses that enhance the area's vitality and cohesion. Potential uses could include community, cultural, commercial, or educational facilities that complement the public space and other civic functions.



BANDSTAND
 LANDSCAPE DESIGN
 THE FAIR
 BIRTHDAY PARTIES
 EVENTS & FESTIVALS
WHAT GOES ON, ON THE FAIR GREEN?
 GAMES
 WILDFLOWER MEADOWS
 JOG SPORTS
 ART & CULTURE
 DAILY PLAY SEASONAL PLANTING
 YOGA
 FUN



5. TCF PLAN

b. PROJECT: RIVER SUCK

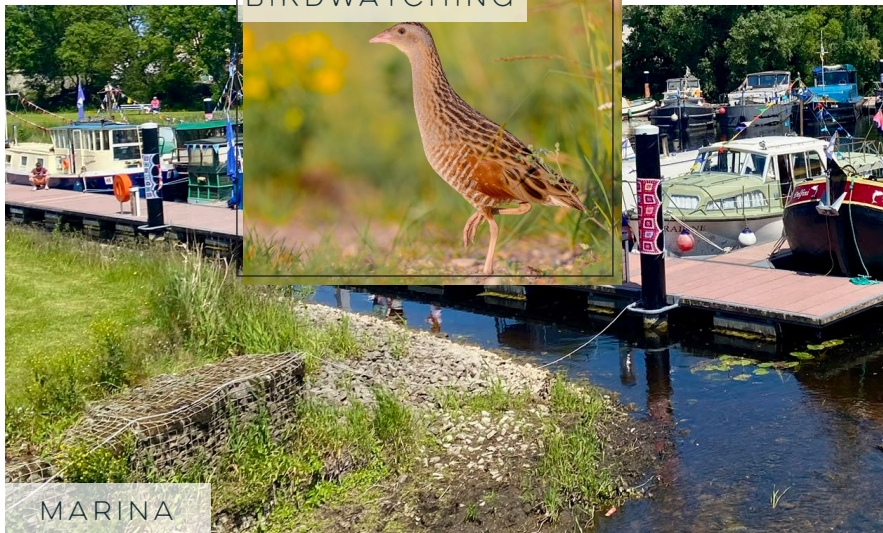
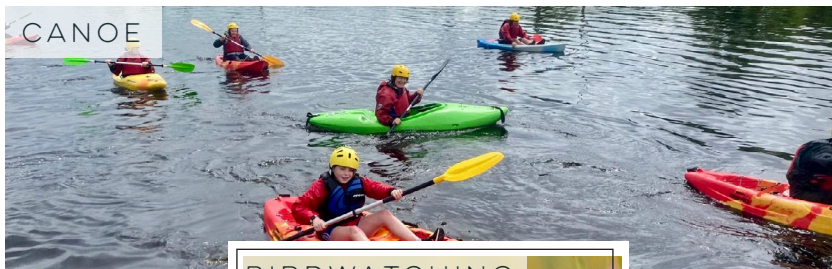
The **RIVER SUCK** will be a biodiverse and special amenity for the town centre offering access, community connection to nature, protection from flooding, and hubs for outdoor recreation.

This project focuses on enhancing the River Suck and its surrounding area as a vibrant and natural space as it meanders around and connects to Ballinasloe's town centre. It aims to sensitively reconnect the community to this important blue and biodiverse asset, while ensuring the area is protected from flooding, and futureproofed against the impacts of climate change.

The River Suck is an important natural and historic environment that supports sensitive wildlife, and can develop a wide variety of uses and events in appropriate areas. The marina in particular can support water-based activities such as canoeing, sailing and swimming, alongside land-based uses like walking, exploration, play and socialising. The area is a key arrival point for the town and could provide a setting for festivals or workshops.

At the heart of the project is a commitment to making the river a space for both nature and people by creating a safe, sustainable, and inclusive environment. In line with the Local Area Plan, any development will enhance biodiversity, protect habitats, and ensure access is resilient and climate-conscious. Central is the appropriate development of the flood defence scheme, which must both protect the town, but not sever natural corridors or people's connection to the river and natural environment.

Improvements will also support town connections to the river by exploring the potential to harness the Town Centre backlands for recreation and amenity in association with the river. Overall, these changes will contribute to a better visitor experience for the town as well.



Implementation will begin in the short-term by supporting the ongoing development of the flood defence scheme and exploration of the sustainable development of the linear park as set out in the Local Area Plan policy objectives. This involves collaboration with local authorities, wildlife experts, and the local community, including opportunities for public input into the process. The Marina can play an important role in the short-term, through events, festivals and community-led initiatives that encourage use and awareness of the space. As the current focus of recreational activity on the river, on-water access improvements to the marina should also be explored.

In the medium- to long-term, a phased delivery of the flood defence and linear park infrastructure will begin. The community can continue to support this development through engagement, around wildlife, biodiversity, and place-making initiatives to shape the development. The result will be a resilient, multi-functional riverside destination that brings lasting benefits for nature, people, and the town as a whole.



5. TCF PLAN

e. PROJECT: THE SQUARE

The **SQUARE** (originally Market Square) will be the vibrant heart of the town centre, bustling with activity, hosting events, and serving as a central gathering place for residents and visitors alike.

This project proposes the redesign of the town centre square to create a high-quality public space that prioritises people, community and everyday life. The square will feature an adaptable layout that accommodates daily uses, including parking, while also providing flexibility for pop-up events, markets and seasonal activities.

At its core, the project aims to celebrate the square's historical significance and attractive setting by transforming it into a welcoming and vibrant focal point for the town. The square has long served as a gathering place in Ballinasloe's history, and its revitalisation will reinforce its role as a civic and cultural anchor.

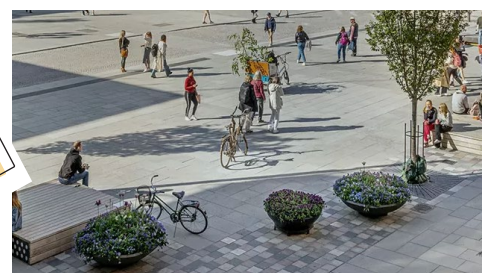
The introduction of high quality materials, including natural stone paving and attractive lighting, would greatly benefit the space and town centre as a whole.

By enhancing its appearance, usability and sense of place, the space will become a lively destination that supports social interaction, local enterprise and community pride throughout the year. These activities will not only animate the square but also help boost the local economy, support small businesses and attract visitors to the town centre. As part of this placemaking project, the design of the town centre roundabout should be revisited to ensure the needs of pedestrians and cyclists are prioritised.



In the short-term, the project will aim to focus on exploring the potential of the square through temporary interventions. This could include hosting more regular markets and pop-up events, as well as undertaking trials to test the impact of temporarily closing parts of the space to vehicles, allowing it to be reimagined as a place for people and community use.

In the medium-to-long term, a collaborative design process will shape the future layout and function of the square and its connections. This process will involve local residents, businesses and key stakeholders to ensure the design reflects the town's shared aspirations. The future public realm will aim to balance functionality and heritage with sustainability, accessibility and placemaking principles, creating a space that is resilient, inclusive and reflective of Ballinasloe's identity.



5. TCF PLAN

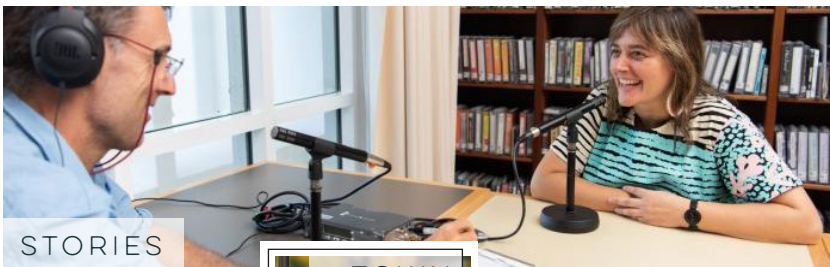
d. PROJECT: **BALLINASLOE STORIES**

The **BALLINASLOE STORIES** will highlight the town’s heritage and develop the town’s identity and its welcome as a place to visit and stay, including a potential Ballinasloe Stories Centre.

This project will celebrate and share Ballinasloe’s rich history, local stories and evolving identity through a series of interconnected, community-led initiatives. These will include the creation of a “Stories Centre” (for Tourism, Heritage, and Culture), the development of heritage trails and interpretive signage, the collection and sharing of community stories, and the creation of a cohesive town brand. The town brand could encompass a visual identity, shared messaging and narrative that reflect Ballinasloe’s spirit to locals, visitors, and other towns. It also creates a consistent and recognisable image of the town that can be used as part of tourism and promotional materials.

Sharing local stories and highlighting Ballinasloe’s identity not only strengthens community connection but also supports wider goals such as destination development, education, and intergenerational knowledge sharing. It can help position Ballinasloe as a unique, culturally rich town within the region.

The aim is to capture the unique heritage and community spirit of Ballinasloe, fostering a sense of pride among residents while building a vibrant, welcoming image that attracts visitors and strengthens the town’s identity both locally and beyond.



STORIES



CULTURE



SIGNS



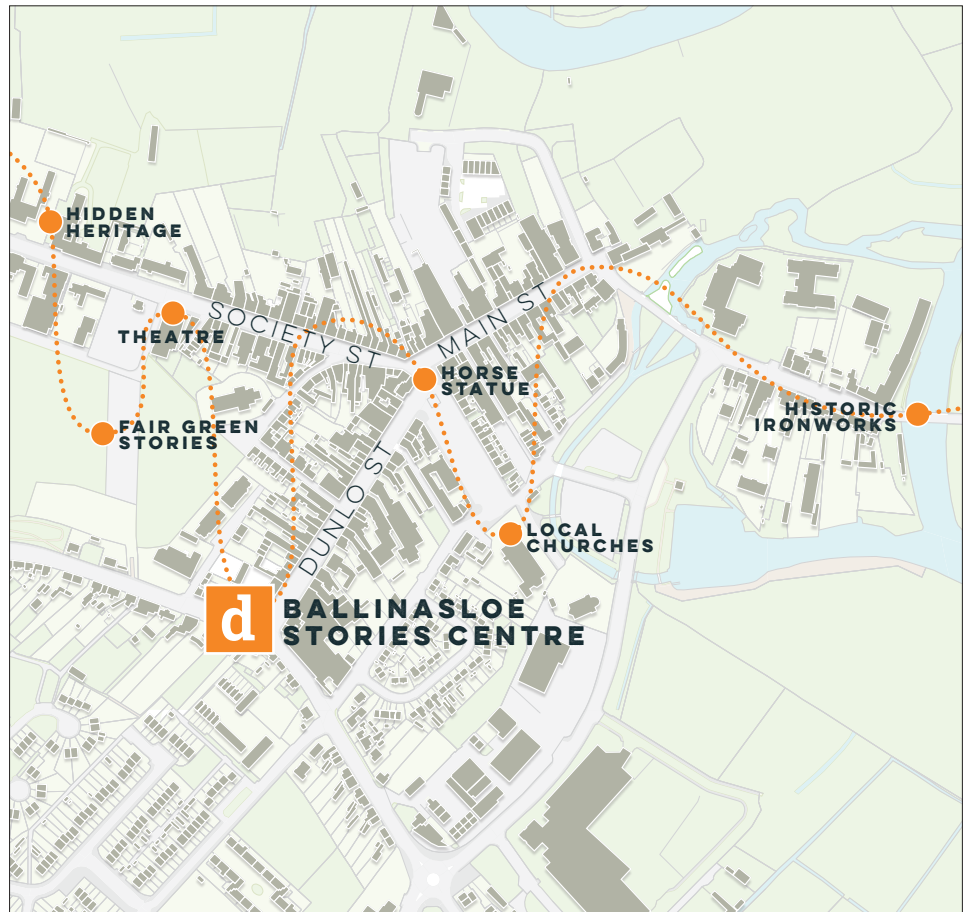
HERITAGE

ART

Implementation will be largely community-led, offering opportunities to involve a wide range of people, organisations and interests. The project offers opportunities to collaborate with local schools, youth groups, historians, creatives, businesses and community groups, encouraging wide and lasting community engagement.

Many initiatives under the project could be delivered in the short- to medium-term and have the potential to grow and evolve over time, as the project encourages creativity and flexibility in its ideas. As such, this project can serve as an ongoing source of momentum and visibility for the wider Town Centre First Plan.

In the short term, priority should be given to establishing the Stories Centre as a base for storytelling and interpretation, alongside the development of heritage trails and walking routes that celebrate local landmarks and history. In the short- to medium-term, a collaborative process to develop a strong, recognisable town brand should be initiated—one that reflects the pride, creativity and shared identity of the Ballinasloe community.



5. TCF PLAN

e. PROJECT: VACANT BUILDINGS

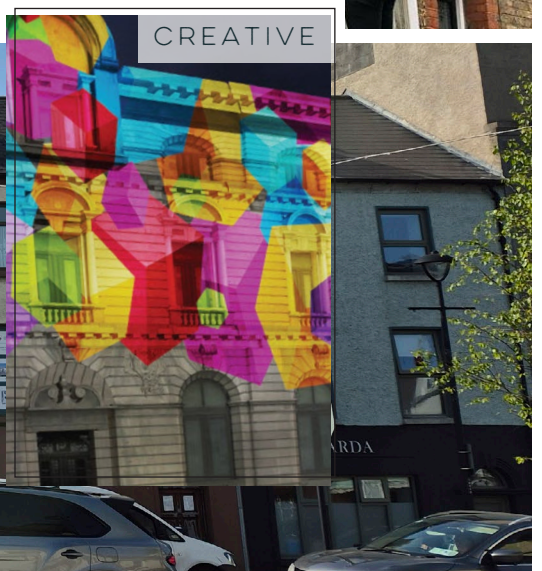
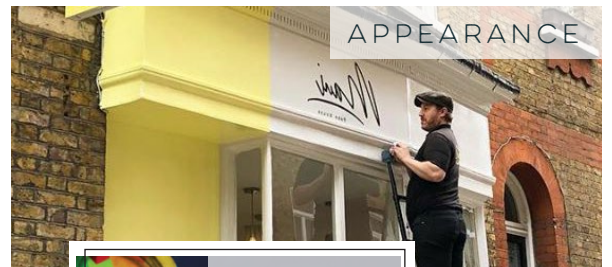
The **VACANT BUILDINGS** will discover new opportunities to revitalise the town centre through landmark buildings and overhead spaces for community, residential, and commercial use.

This project takes a multi-faceted approach to addressing vacancy in Ballinasloe, particularly focusing on key landmark buildings and underused upper storey spaces. It seeks to celebrate local success stories (such as the regeneration at Dooley's Corner) while supporting ongoing council processes, encouraging both public and private investment, enabling temporary uses, connecting building owners with relevant information and resources, and developing showcase pilot projects through the formation of a new Ballinasloe Development Group.

The aim is to revitalise the town centre by increasing residential, commercial, and community occupancy, which in turn will support the vibrancy of local streets, businesses, and the wider town environment.

Community feedback has highlighted several key vacancies in need of attention, including overhead living spaces, Hayden's Hotel, and St Brigid's Hospital.

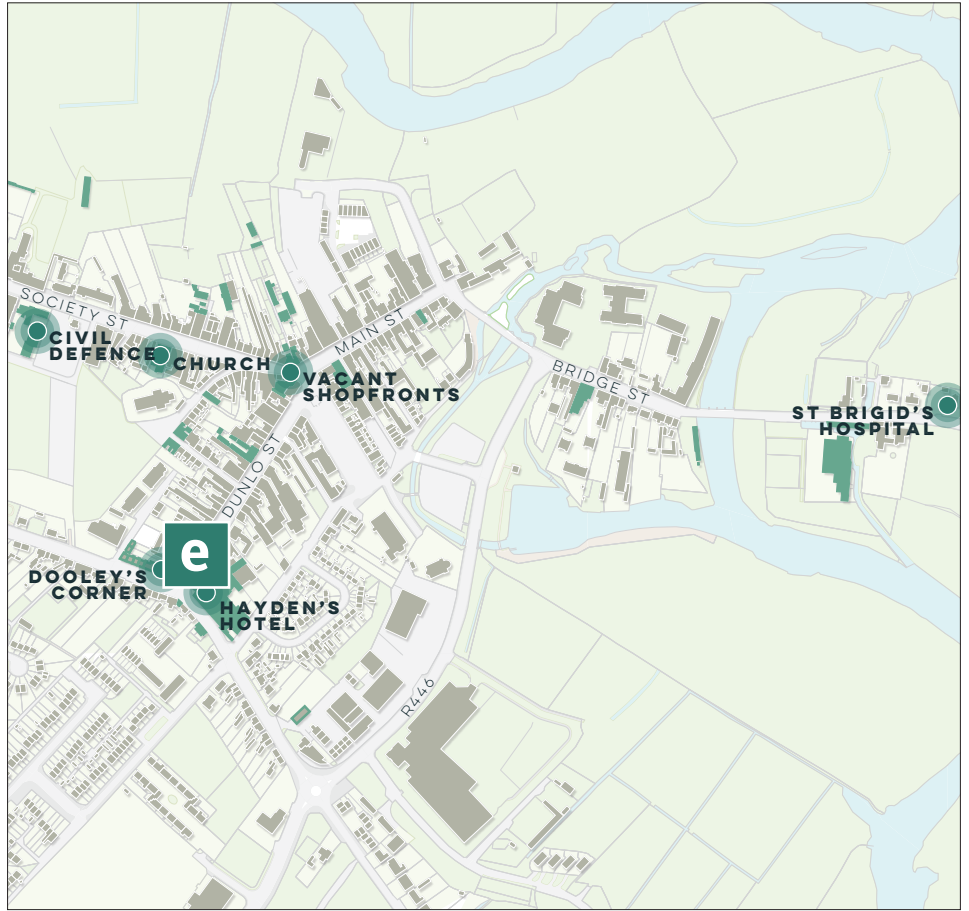
Implementation will require sustained communication with relevant stakeholders and an adaptable approach that can respond to emerging funding opportunities. Establishing a clear and up-to-date overview of vacant properties, ongoing renovations, development requirements, and available resources will help ensure new investment is effectively directed. Access to information and support will be particularly valuable for the owners of buildings who need to overcome the technical challenges of converting underused upper storeys into residential accommodation.



In the short-term, the focus should be on supporting current renovation projects and using them as exemplar case studies to guide future work.

In the medium- to long-term, Ballinasloe should position itself as a town open to innovative and flexible approaches to reuse, while continuing to support a wide range of new initiatives and partnerships from across the community and beyond.

Significant potential exists to revitalise the town centre through the methodical restoration of vacant properties.



INVESTMENT

WHAT GOES ON, WITH OUR VACANT BUILDINGS?

POP-UPS HOMES
RENOVATIONS COMMUNITY
COLLABORATION WORKSHOPS

INNOVATION
HISTORY
PAINTING



5. TCF PLAN

f. PROJECT: HEALTHY STREETS

The **HEALTHY STREETS** will prioritise people, by making the streets safe places that promote healthy lifestyles through lighting, walking and cycling infrastructure, and thoughtful design.

This project focuses on enhancing the connectivity, accessibility and safety of Ballinasloe's town centre, making it a more attractive and user-friendly environment for all. It supports the continued development of cycling infrastructure and the wider active travel network by the council, encouraging sustainable and healthy modes of transport.

A key aim is to improve the overall sense of safety in the town centre, particularly within its laneways, by upgrading lighting, enhancing CCTV, and encouraging increased activity in these spaces. Walking will be made more appealing through the delivery of targeted improvements, such as new seating, improved surfaces and the removal of barriers.

The project also encourages opportunities to strengthen connections between the town centre and nearby developments, including the train station, the Pollboy recreational area and the emerging regional Greenway network, ensuring Ballinasloe is well-integrated into wider active travel and recreational routes.

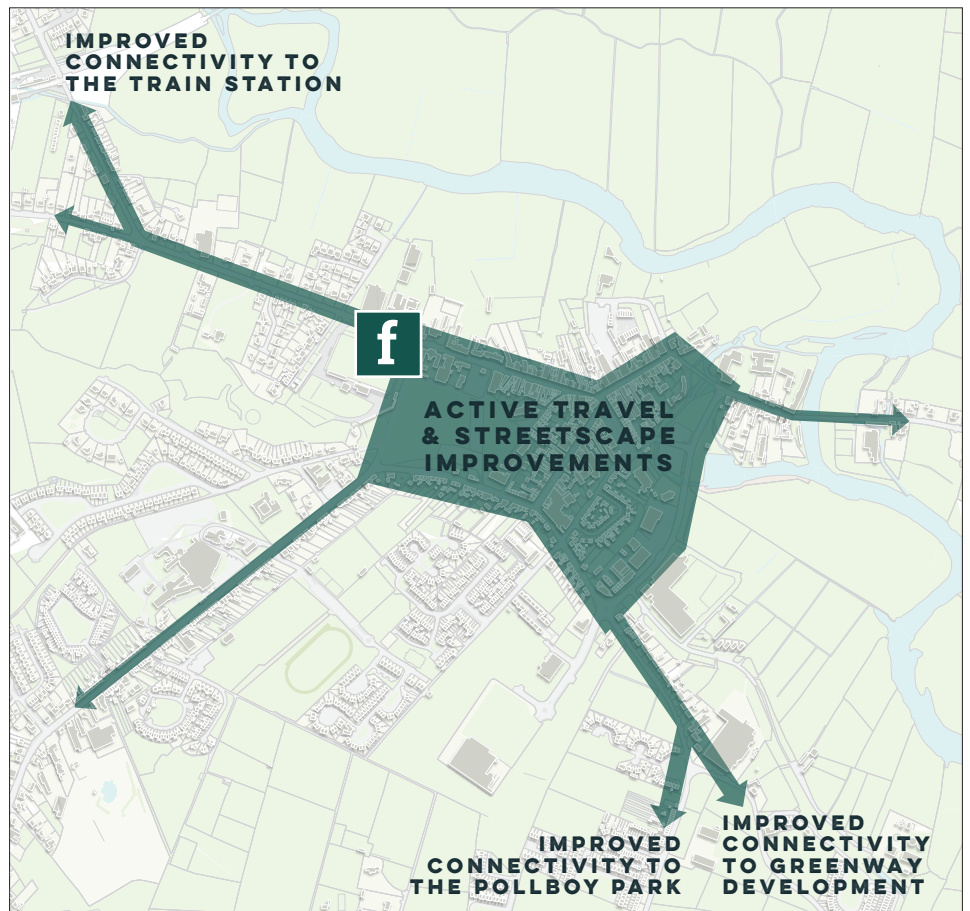
By making the town centre safer, more accessible and better connected, the project aims to increase footfall, support local businesses, and contribute to a more vibrant and welcoming urban environment. Promoting walking and cycling will also support community health and wellbeing, help to foster social connections and a stronger sense of place, and assist the town in fulfilling its wider climate responsibilities.



Implementation should focus on Town Centre development, though opportunities exist to connect to a wider context.

In the short term, this will focus on supporting local authority processes and delivery, by engaging as a community, identifying community-led funding and initiatives for seating and cycling stands, and helping to inform the proposals and accelerate the roll-out of active travel infrastructure and improvements to public realm. The community also has the opportunity to support each other in developing a safer environment and wider support system for everyone, through its community groups and local outreach.

In the medium- to long-term the active travel network should aim to grow and further connect the town centre and wider town through phased delivery. Making the streets of Ballinasloe safer and more attractive for people stands to have transformative impact on the town and local people.



5. TCF PLAN

g. PROJECT: TOWN CENTRE NEIGHBOURHOOD

The **TOWN CENTRE NEIGHBOURHOOD** will develop the town centre’s integral backlands and shortcuts to create a thriving home for the community to live in, work in, and visit, with many facilities and amenities in close proximity.

This project aims to transform the town centre backlands into vibrant, mixed-use neighbourhoods by revitalising historic laneways and pedestrian connections, restoring existing buildings, and introducing new developments, which must provide contemporary, high quality town housing and apartments. Good architecture and urban design is required to ensure these new buildings fit into the urban fabric, complement the town’s distinctive character, and uphold sustainable development principles.

This project aligns with broader goals to create a more liveable, resilient, and inclusive town centre by supporting economic growth, environmental sustainability, and a sense of community.

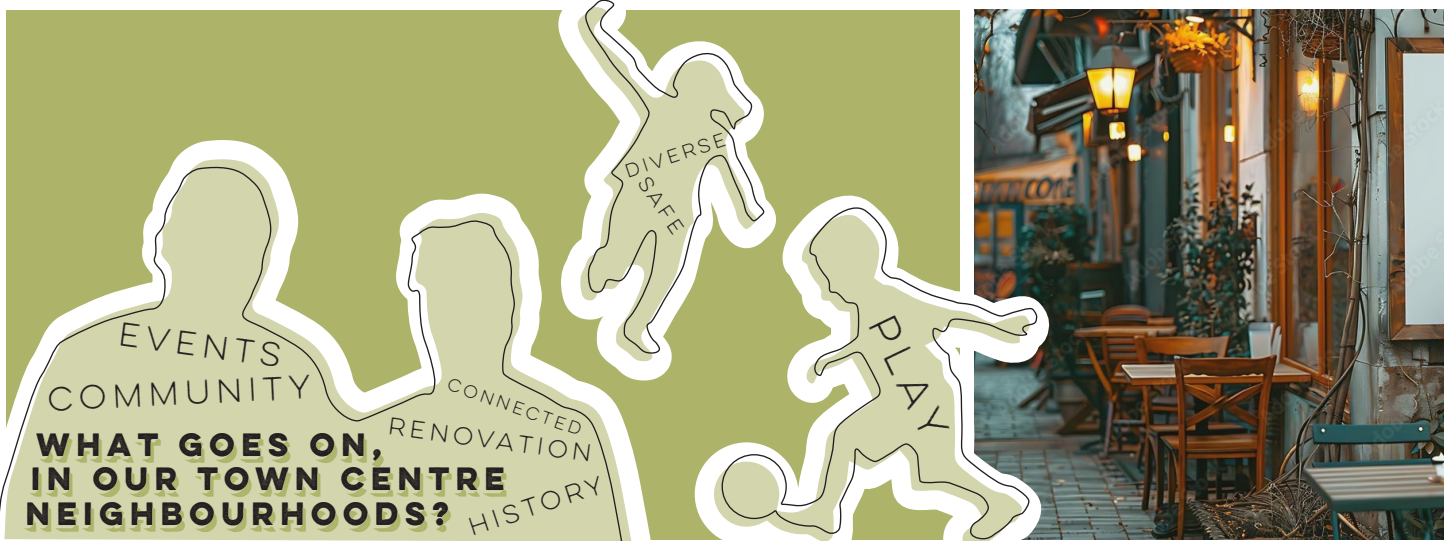
The project aims to increase the town centre resident population and footfall and enhance the vibrancy of the town centre in order to support its revitalisation and long-term resilience. Improving the permeability of the area through additional connections will make the town centre safer and easier to navigate. Encouraging residential development and activity on its public spaces will bring more ‘eyes on the street’, enhancing both safety and the overall sense of place, particularly along underused laneways. By creating diverse homes, local businesses, and community use, the project will support local employment, increase housing supply for everyone, and create a more socially cohesive town centre.



Successful delivery of the project will rely on close collaboration with landowners, stakeholders, and the wider community. Therefore, engagement should be at the heart of the process, with opportunities to contribute through workshops, consultations, and design sessions to ensure that development reflects local needs, supports inclusive growth, and can be delivered sustainably.

In the short-term, a detailed masterplan for the town centre backlands will be developed in partnership with landowners and the local community. This masterplan will guide future growth and regeneration, ensuring a shared vision is in place.

Over the medium- to long-term, the revitalisation of the backlands will be implemented in phases, allowing for coordinated development and evolution of the area into a thriving part of the town centre and wider town. The phased approach may include initial improvements to key laneways and public realm, followed by targeted infill development, adaptive reuse of existing buildings, and larger-scale regeneration where appropriate.



6. NEXT STEPS

CONCLUSION

The Town Centre First Plan for Ballinasloe has set out a exciting vision for the future development of Ballinasloe.

Through community engagement and community representatives, the plan is a community-led vision and objectives for a revitalised town centre. Its projects touch on many aspects of life in Ballinasloe, and aim to build on the current momentum in the town. The stage is now set for the delivery of the vision by working together in a step-by-step approach to realise the full potential of Ballinasloe.

IMPLEMENTATION

The Town Centre First Plan identifies a range of projects for implementation over the short, medium, and long term. The plan aligns with ongoing developments in Ballinasloe and seeks to maintain their momentum with new projects. Successes along the way should be celebrated and keep the community positively engaged, informed, and involved in the town's regeneration journey.

Key projects will be broken down into smaller actions, which will be phased, should be prioritised, and funding is to be found for their delivery. The Action Plan (on the next pages) offers this framework and is intended to evolve over time and should be reviewed regularly as implementation progresses and initiatives are put forward. This flexible approach allows actions to align with available funding opportunities.

New initiatives will emerge and will play an important role in Ballinasloe's future. Focusing these on revitalising the Town Centre, and aligning them with the vision and objectives in this Plan will support the overall development of Ballinasloe.

COMMUNICATION & COLLABORATION

This Town Centre First Plan has been developed through a collaborative process. It is vital that this spirit of collaboration is maintained and strengthened throughout the lifetime of the plan. Communication around the delivery of the Plan should be regular, clear, and transparent, ensuring that everyone in Ballinasloe is informed of progress.

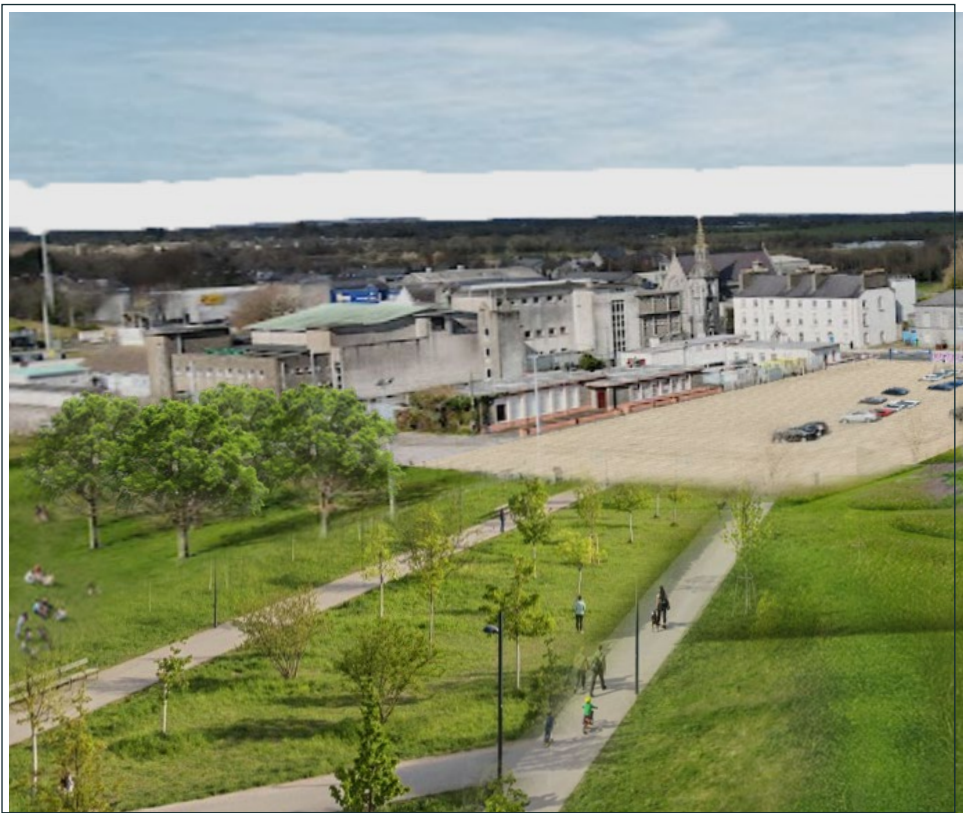
Consideration should be given to the most effective communication methods to reach a broad audience, including those who may not attend public events.

Every Town Centre First project, and related initiatives, should be delivered with the same commitment to collaboration and co-design. This means regular public engagement opportunities, along with detailed dialogue with key stakeholders such as landowners and elected representatives.

FUNDING & DELIVERY

Successful implementation recognises the importance of securing financial support from a range of sources. These funding opportunities span both the public and private sectors, including grants, partnerships, and community-led initiatives. The Town Centre First initiative sets up TCF plans and projects for many funding opportunities, including its own funding streams, the Rural Regeneration and Development Fund (RRDF), Town and Village Renewal, Outdoor Recreation, LEADER funding, and targeted funds such as the EU Just Transition fund (a unique opportunity for the Midlands regions), as well as funding related to themes such as Active Travel, Heritage, and Biodiversity.

Monitoring new and availing of multiple funding opportunities will be an important task in the period ahead.



TOWN CENTRE FIRST PROJECTS		POTENTIAL PROJECT PARTNERS (in addition to the Town Team & Galway County Council)	ALREADY ONGOING INITIATIVES (at time of writing)
a.	FAIR GREEN	Ballinasloe Fair & Festival, Community Groups, Commercial Stakeholders, Event Organisers	Expansion of year-round events calendar of the Fair Green space
b.	RIVER SUCK	Community Groups, Local Businesses and Stakeholders, Pop-up Enterprises	Development of the River Suck Linear Park & Flood Defense schemes, Events and festivals
c.	THE SQUARE	Community Groups, Local Businesses (particularly those adjoining the Square), Event Organisers, Regional Businesses (Markets)	Markets and Pop-up events
d.	BALLINASLOE STORIES	Local Community Groups, Schools, Libraries, Artists, Historians, Businesses, Event Organisers	Development of the stories centre (pending GCC approval), and heritage trails
e.	VACANT BUILDINGS	Community Groups, Private Investors, Commercial Stakeholders, Development Charities	Dooley's Corner Development, Canal Warehouse renovation
f.	HEALTHY STREETS	Community Groups, Local businesses, Sports Groups	Ballinasloe Active Travel Scheme, CCTV Improvements, Safety Community Group
g.	TOWN CENTRE NEIGHBOURHOOD	Private Developers, Landowners, Development Groups, Community Groups, Funding Organisers, Event Organisers	



6. NEXT STEPS

ACTION PLAN

The Action Plan outlines the suggested high-level steps needed to progress each project as part of the wider Plan.

These are designed to maintain momentum for implementation and ensure each project is well positioned to capitalise on future investment opportunities.

a. PROJECT: **FAIR GREEN**

- i. Promote and expand seasonal uses and events
- ii. Develop site programme and design brief
- iii. Identify and pursue funding and partnership opportunities
- iv. Undertake detailed co-design processes for the Fair Green Masterplan
- v. Bring forward and maintain supporting infrastructure (potential first phase)
- vi. Implement and maintain remaining phases

b. PROJECT: **RIVER SUCK**

- i. Promote and expand existing uses and events
- ii. Support and collaborate with ongoing council processes for Linear Park
- iii. Undertake site identification and selection process
- iv. Develop site-wide programme and design brief
- v. Identify and pursue funding and partnership opportunities
- vi. Undertake collaborative detailed co-design processes
- vii. Bring forward and maintain schemes through phased implementation approach

c. PROJECT: **THE SQUARE**

- i. Promote and expand existing uses and events
- ii. Develop design brief
- iii. Identify and pursue funding and partnership opportunities
- iv. Co-design the Square
- v. Undertake collaborative detailed design processes
- vi. Bring forward and maintain schemes through phased implementation approach

d. PROJECT: **BALLINASLOE STORIES**

- i. Identify and record heritage and storytelling opportunities
- ii. Support and expand ongoing heritage and storytelling initiatives, such as Heritage Trails
- iii. Co-design brief for Ballinasloe Stories Centre
- iv. Develop brief for Ballinasloe Brand
- v. Identify and pursue funding and partnership opportunities for various initiatives
- vi. Bring forward and maintain initiatives through iterative and collaborative processes

e. PROJECT: **VACANT BUILDINGS**

- i. Support ongoing council and local efforts to address vacancy
- ii. Celebrate local success stories of building reuse and revitalisation
- iii. Promote partnership between property owners, community groups, the council, and potential tenants or users
- iv. Identify resources to support and engage with stakeholders
- v. Develop brief for exemplary case study and temporary use strategies for Ballinasloe
- vi. Identify and pursue funding and partnership opportunities
- vii. Bring forward and maintain further success stories

f. PROJECT: **HEALTHY STREETS**

- i. Complete walkability audit
- ii. Develop brief for a 'Safe and Vibrant Town Centre Strategy'
- iii. Support and collaborate on ongoing council efforts for active travel infrastructure and network
- iv. Promote and develop walking & cycling initiatives
- v. Identify and pursue funding and partnership opportunities
- vi. Undertake collaborative detailed design processes
- vii. Bring forward and maintain schemes through phased implementation approach

g. PROJECT: **TOWN CENTRE NEIGHBOURHOOD**

- i. Coordinate with council, landowners, and stakeholders around development opportunities
- ii. Develop brief for collaborative 'Backlands Masterplan'
- iii. Undertake site identification and selection process
- iv. Identify and pursue funding partnership opportunities
- v. Undertake collaborative detailed design processes
- vi. Bring forward and maintain scheme through phased implementation approach



BALLINASLOE
TOWN TEAM

thepaulhogarthcompany



Comhairle Chontae na Gaillimhe
Galway County Council



Lár Bailte ar dTús
Town Centre First



Rialtas na hÉireann
Government of Ireland



Arna chomhchistiú ag
an Aontas Eorpach
Co-funded by the
European Union



Tionól Réigiúnach
An Tuaiscirt & An Iarthair
Northern & Western
Regional Assembly

