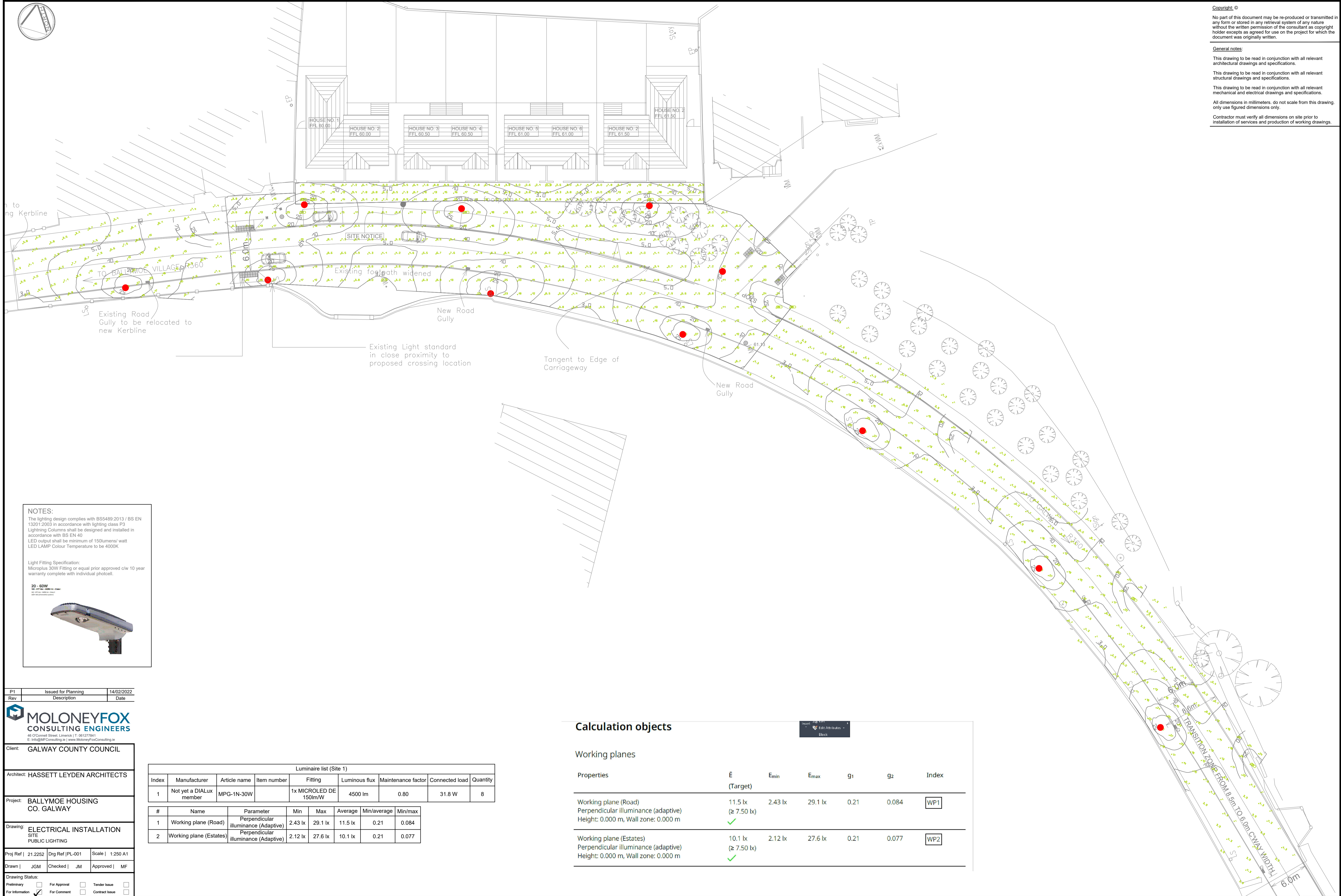




Copyright ©
 No part of this document may be re-produced or transmitted in any form or stored in any retrieval system of any nature without the written permission of the consultant as copyright holder except as agreed for use on the project for which the document was originally written.

General notes:
 This drawing to be read in conjunction with all relevant architectural drawings and specifications.
 This drawing to be read in conjunction with all relevant structural drawings and specifications.
 This drawing to be read in conjunction with all relevant mechanical and electrical drawings and specifications.
 All dimensions in millimeters, do not scale from this drawing, only use figured dimensions only.
 Contractor must verify all dimensions on site prior to installation of services and production of working drawings.



NOTES:
 The lighting design complies with BS5489:2013 / BS EN 15201:2003 in accordance with lighting class P3
 Lighting Columns shall be designed and installed in accordance with BS EN 40
 LED output shall be minimum of 150lumens/ watt
 LED LAMP Colour Temperature to be 4000K

Light Fitting Specification:
 Microplus 30W Fitting or equal prior approved clw 10 year warranty complete with individual photocell.

20 - 60W
 80 - 2700K (4000K - 5000K)



P1	Issued for Planning	14/02/2022
Rev	Description	Date

MOLONEYFOX CONSULTING ENGINEERS
 46 O'Connell Street, Limerick T: 061277384
 E: info@mfconsulting.ie | www.moloneyfoxconsulting.ie

Client: GALWAY COUNTY COUNCIL

Architect: HASSETT LEYDEN ARCHITECTS

Project: BALLYMOE HOUSING CO. GALWAY

Drawing: ELECTRICAL INSTALLATION SITE PUBLIC LIGHTING

Proj Ref 21.2252	Dwg Ref PL-001	Scale 1:250 A1
Drawn JGM	Checked JM	Approved MF

Drawing Status:
 Preliminary For Approval Tender Issue
 For Information For Comment Contract Issue

Luminaire list (Site 1)

Index	Manufacturer	Article name	Item number	Fitting	Luminous flux	Maintenance factor	Connected load	Quantity
1	Not yet a DIALux member	MPG-1N-30W		1x MICROLED DE 150lm/W	4500 lm	0.80	31.8 W	8

#	Name	Parameter	Min	Max	Average	Min/average	Min/max
1	Working plane (Road)	Perpendicular illuminance (Adaptive)	2.43 lx	29.1 lx	11.5 lx	0.21	0.084
2	Working plane (Estates)	Perpendicular illuminance (Adaptive)	2.12 lx	27.6 lx	10.1 lx	0.21	0.077

Calculation objects

Working planes

Properties	E (Target)	E _{min}	E _{max}	g ₁	g ₂	Index
Working plane (Road) Perpendicular illuminance (adaptive) Height: 0.000 m, Wall zone: 0.000 m	11.5 lx (≥ 7.50 lx) ✓	2.43 lx	29.1 lx	0.21	0.084	WP1
Working plane (Estates) Perpendicular illuminance (adaptive) Height: 0.000 m, Wall zone: 0.000 m	10.1 lx (≥ 7.50 lx) ✓	2.12 lx	27.6 lx	0.21	0.077	WP2