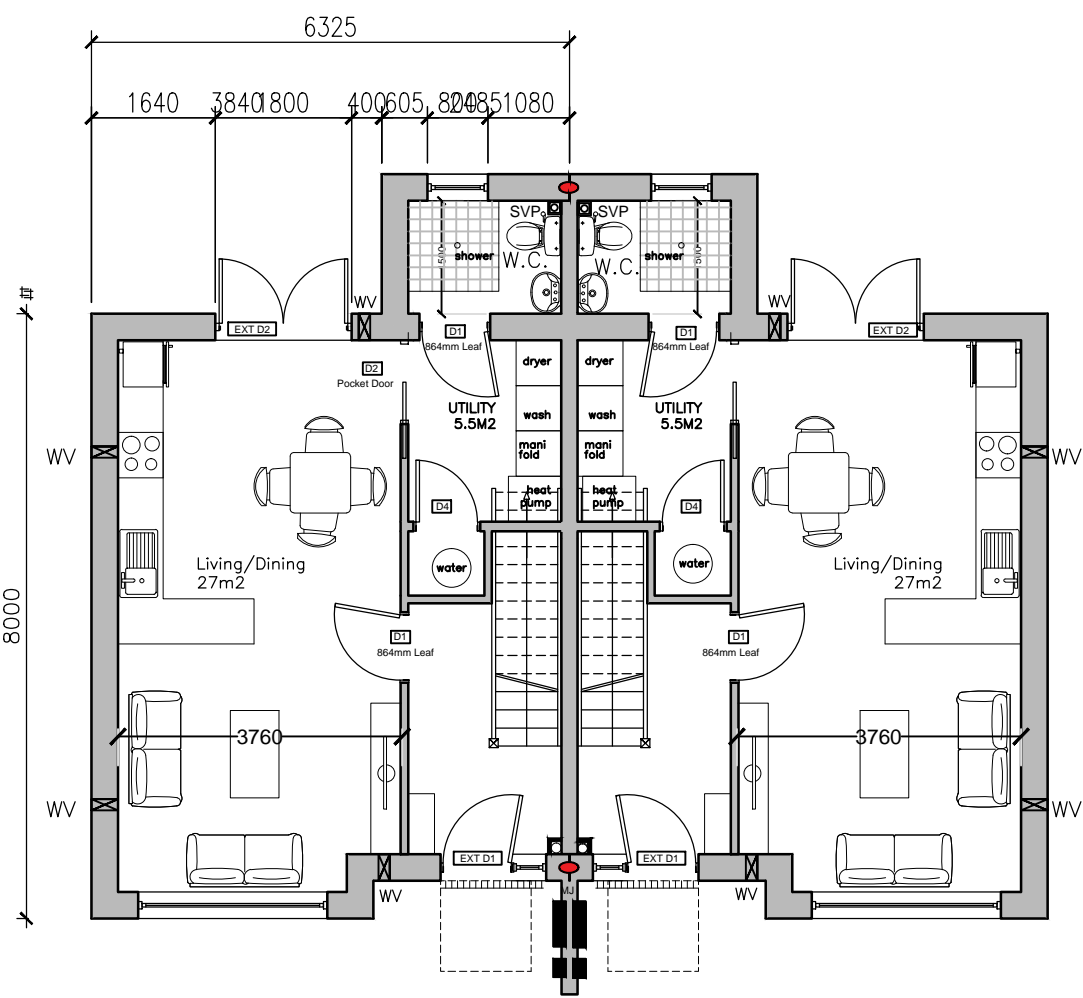


FIRST FLOOR UNITS 3,4,5,&6

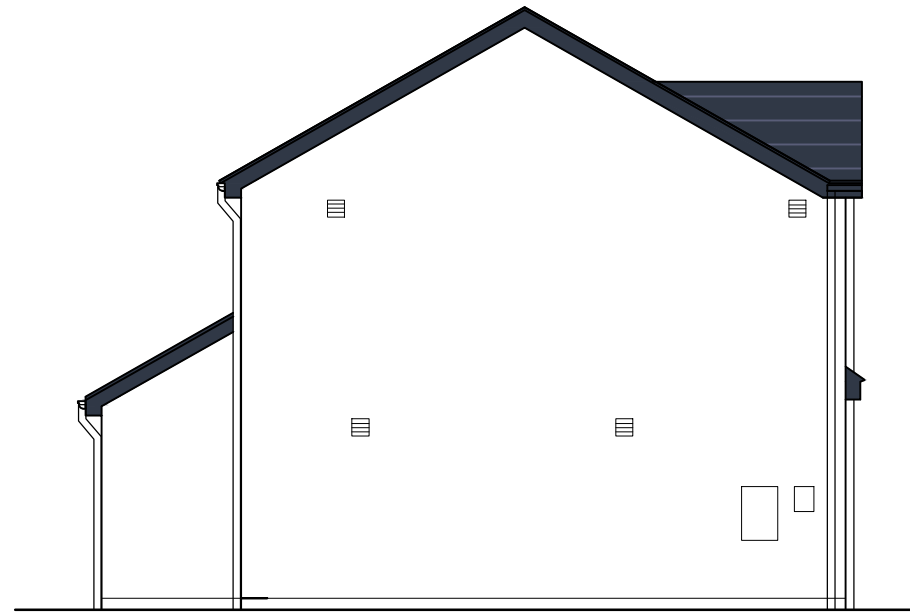


2B/4P 2 Storey QHfSC
Target Floor Area Approx
80m²

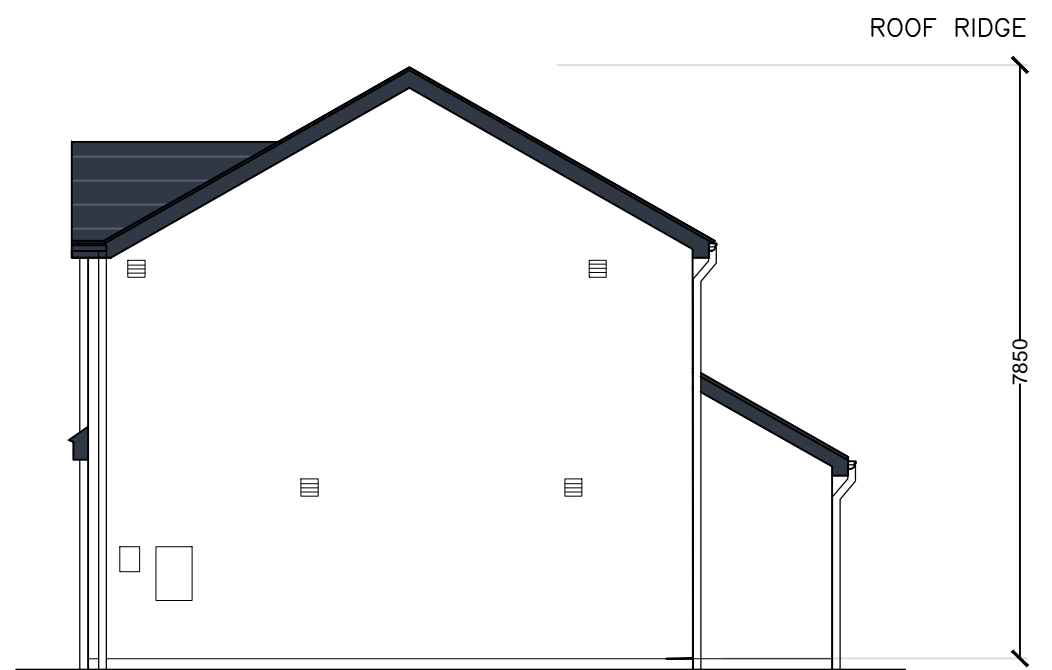
TOTAL FLOOR APPROX 86M²

GROUND FLOOR UNITS 3,4,5,& 6

2 Bed 4 Person
2 Storey



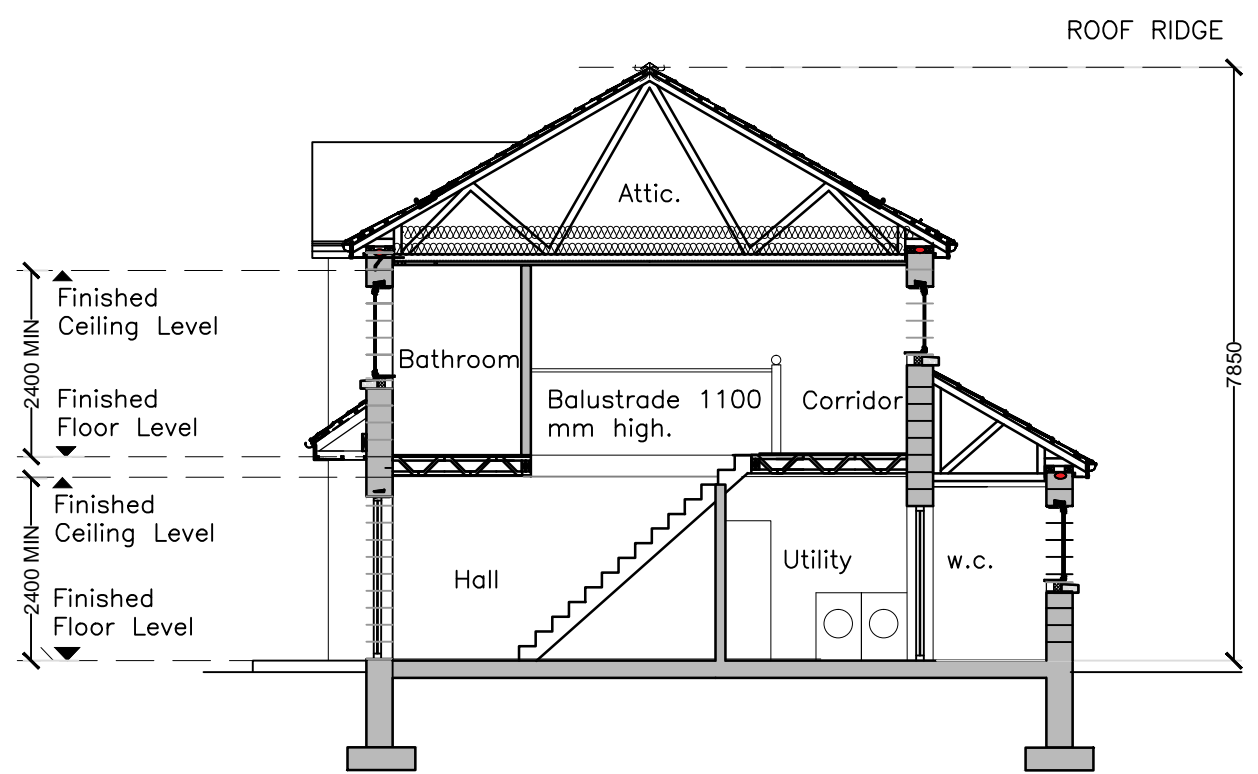
SIDE ELEVATION (N)



SIDE ELEVATION (S)



FRONT ELEVATION UNITS 3,4,5,& 6



REAR ELEVATION UNITS 3,4,5,& 6

ISSUED FOR PLANNING

Rev A: Missing part of the building added to elevation (GF WC) 01.04.22 EK



PROJECT: Ballymoe Housing
CLIENT: Galway County Council

Job No.
2636

TITLE	DATE	DRW BY
House Plans, Elevations and Sections	February 2022 SL	
SCALE: 1:100@A2		APP BY

Dwg. No.
W-04-La

HASSETT LEYDEN ASSOCIATES ARCHITECTS & CIVIL ENGINEERS
4 BINDON ST, ENNIS, CO CLARE. PHONE (085) 6828422
56 CLARE STREET, LIMERICK. FAX (085) 6820379 PHONE (061) 417990