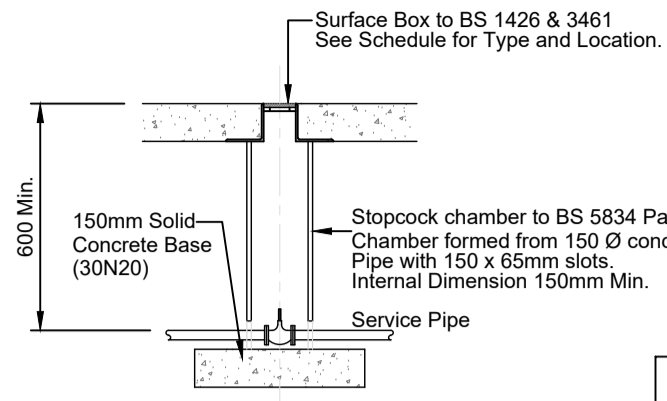


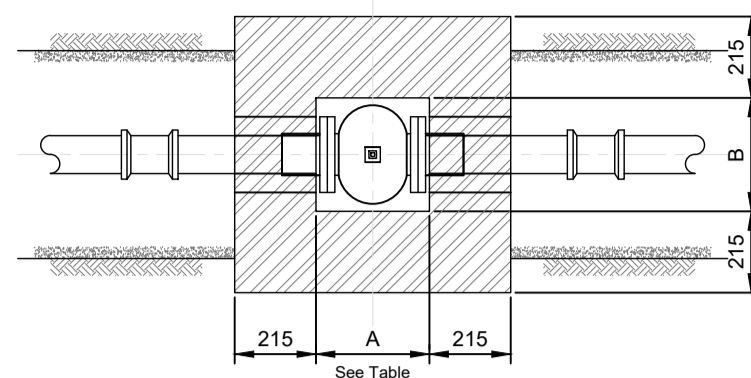
Plan
Scale 1:20

Internal Dimensions of Hydrant and Valve Chambers as shown are minimum. Sluice Valve & stopcock Surface Boxes To IS 261, BS 1425 & 3461. SCHEDULE OF TYPE AND LOCATION



Section Through Stopcock Chamber
Scale 1:20

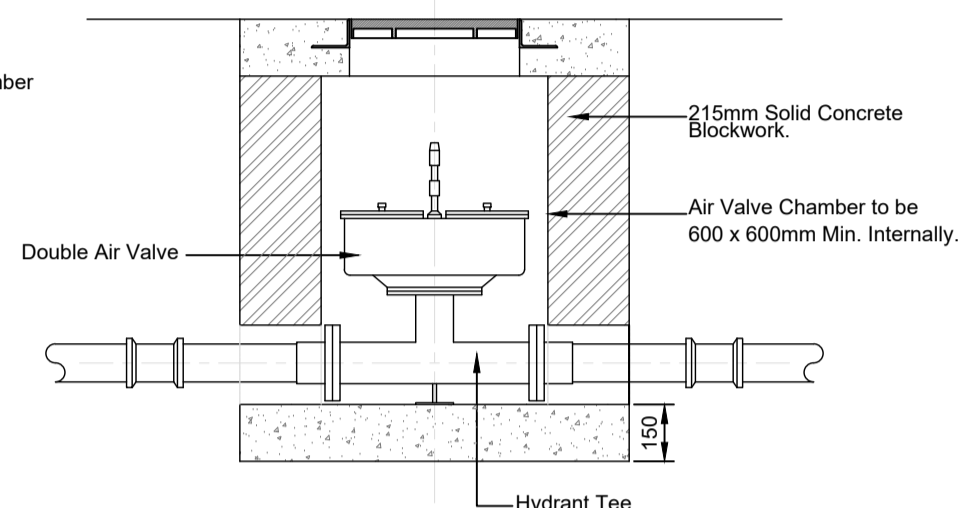
Internal Dimensions of Hydrant and Valve Chambers as shown are minimum



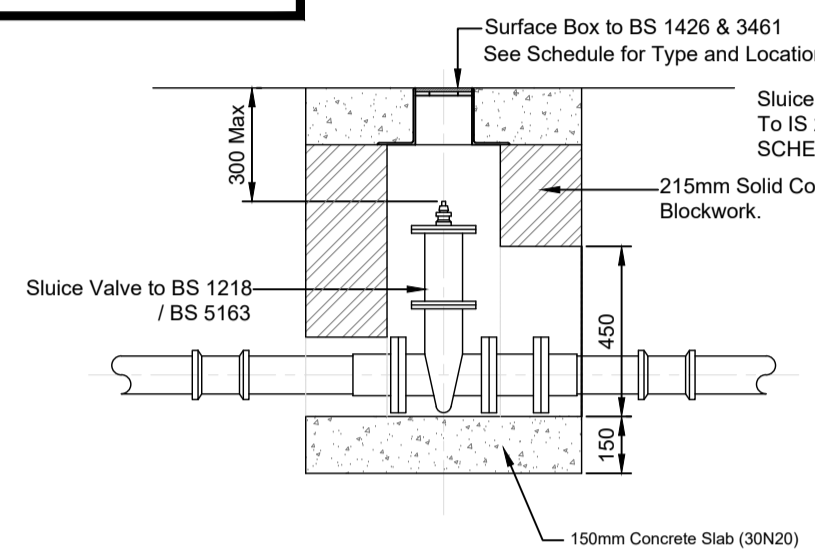
Plan
Scale 1:20

PIPE SIZE	A	B
150	300	300
150 to 225	450	450

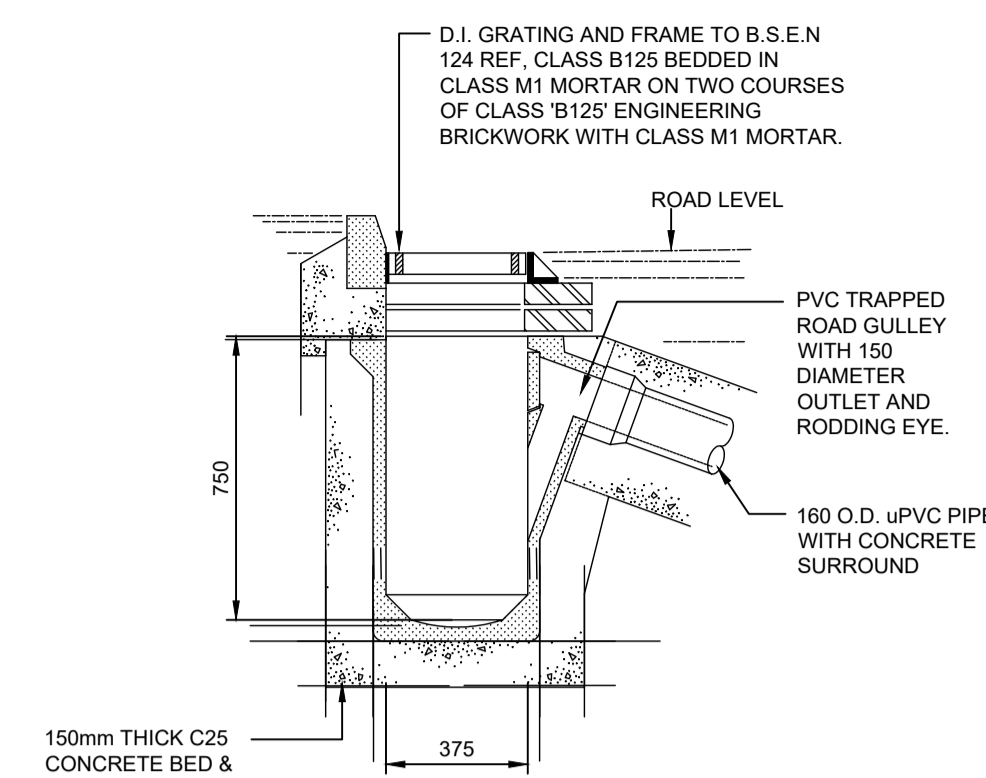
Hydrants, Air Valves and Sluice Valves shall be located by indicator plates positioned to the approval of the Local Authority. Indicator plates shall comply with current edition of BS 3251 and letter accordingly. Where marker posts are used they shall be concrete complying with IS 162.



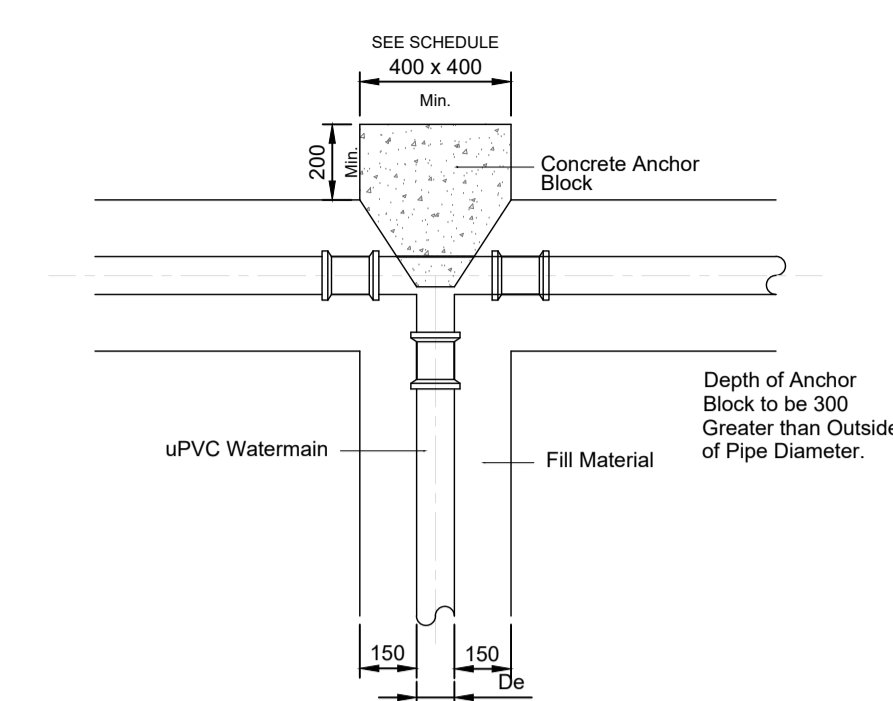
Section Through Air Valve Chamber
Scale 1:20



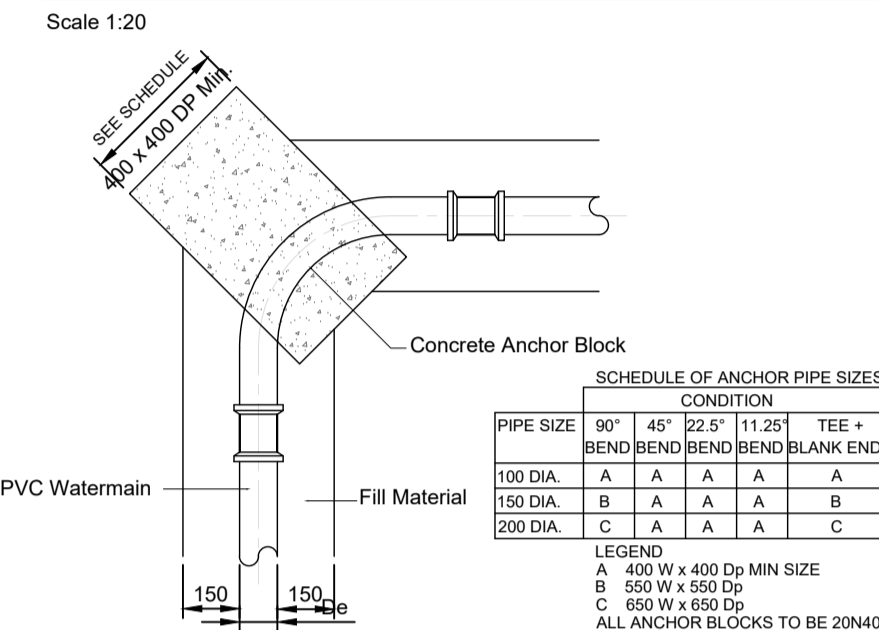
Section Through Sluice Valve Chamber
Scale 1:20



Typical Roadgully Detail
Scale 1:20



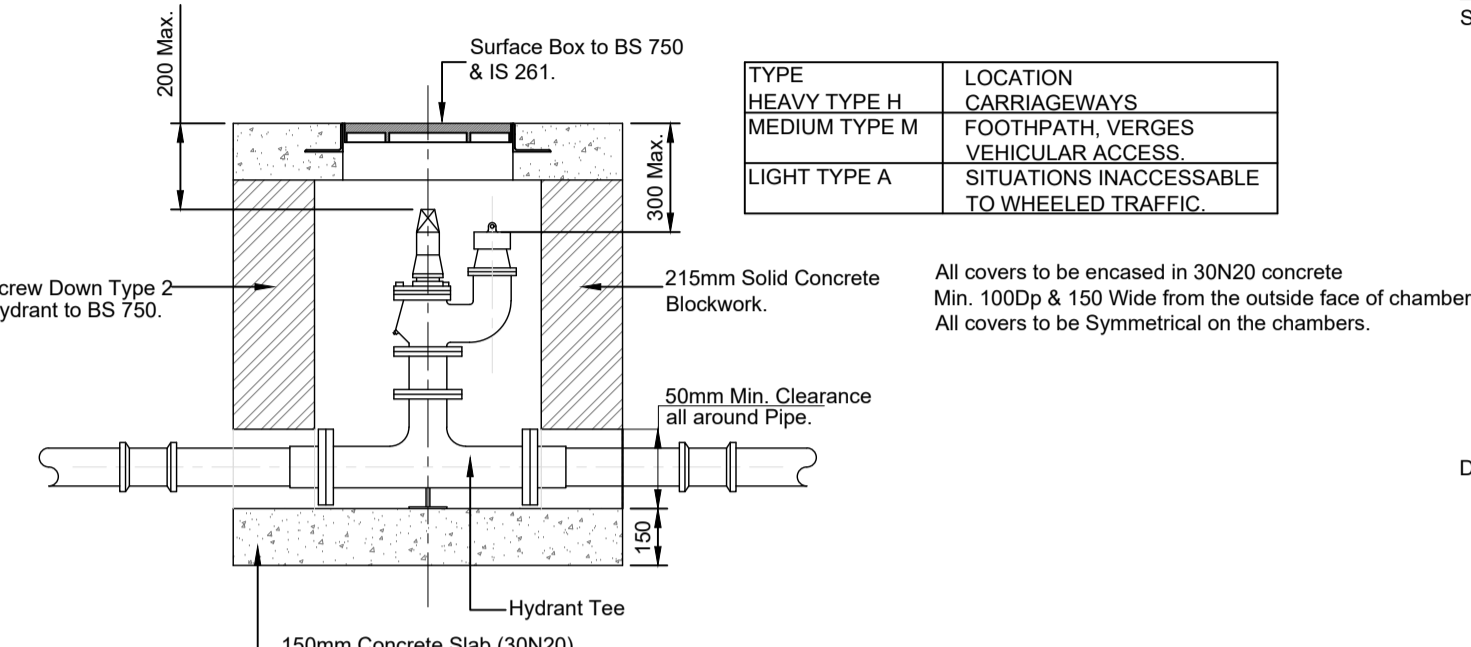
DETAIL OF PIPE ANCHOR AT TEE JUNCTION
Scale 1:20



DETAIL OF PIPE ANCHOR AT BEND
Scale 1:20

NOTE: At anchor positions watermain to be wrapped with a layer of 1000 gauge polythene film before concrete is placed around pipe.

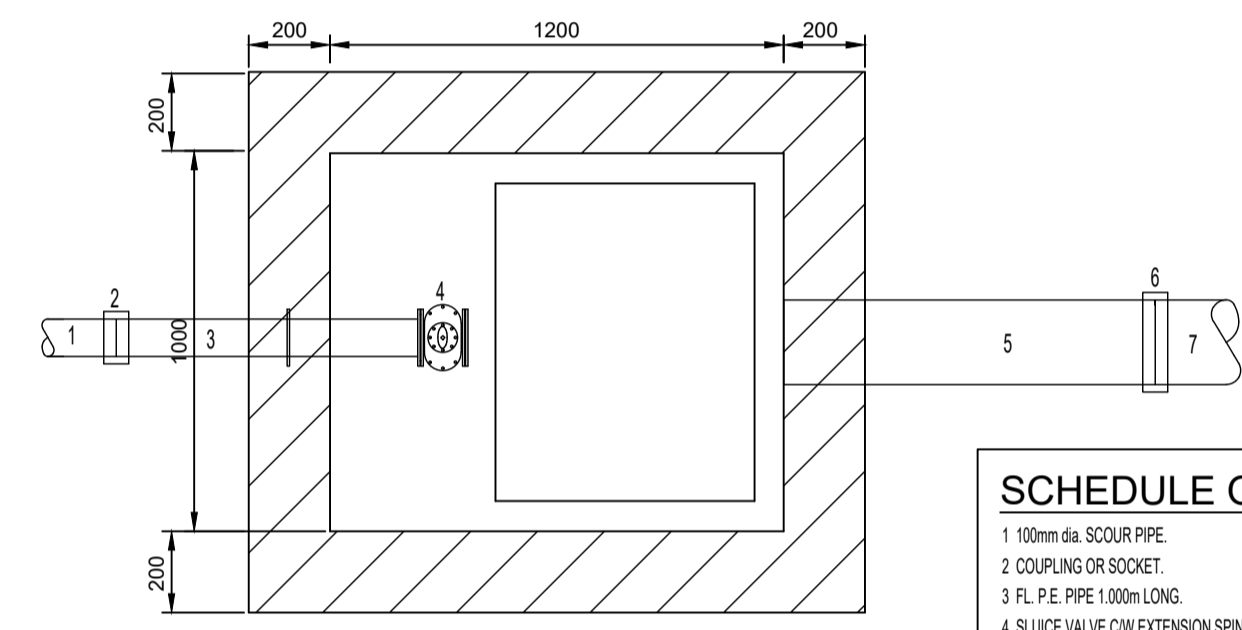
- FOR SETTING OUT OF KERBS REFER TO LAYOUT PLAN
- KERBS TO IS 146 FIGURE 7 OR BS 7263 : PART 3 TYPE HB2
- CONCRETE FOR BED AND HAUNCH TO BE GRADE C20(MIX ST4)



Section Through Hydrant Chamber
Scale 1:20

TYPE	LOCATION
HEAVY TYPE H	CARRIAGEWAYS
MEDIUM TYPE M	FOOTPATH, VERGES
LIGHT TYPE A	VEHICULAR ACCESS SITUATIONS INACCESSIBLE TO WHEELED TRAFFIC.

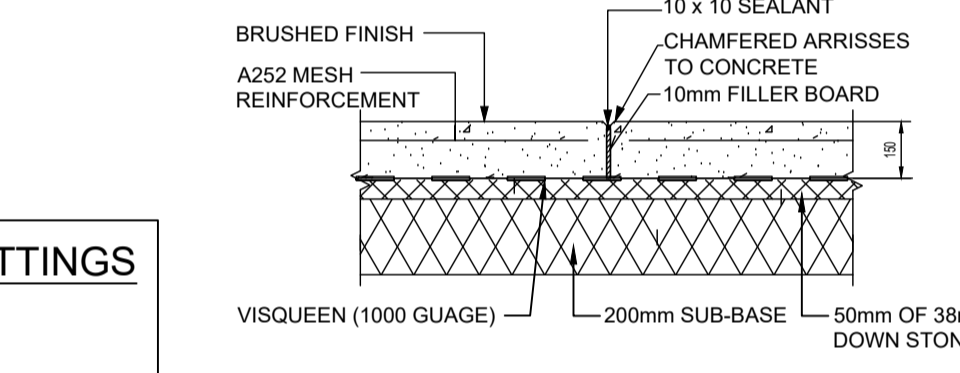
All covers to be encased in 30N20 concrete Min. 100Dp & 150 Wide from the outside face of chamber. All covers to be Symmetrical on the chambers.



Plan
Scale 1:20

SCHEDULE OF PIPE FITTINGS

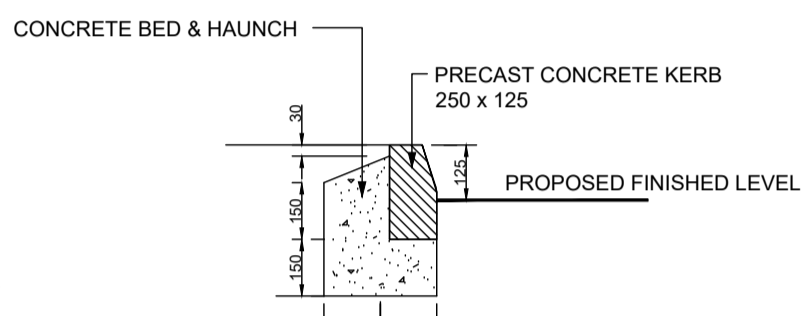
- 100mm dia. SCOUR PIPE
- COUPLING OR SOCKET
- FL PE PIPE 1300mm LONG
- SLUICE VALVE ON EXTENSION SPINDLE AND FIXING BRACKETS
- 200mm dia. uPVC DRAINAGE PIPE
- COUPLING OR SOCKET
- 200mm dia. uPVC PIPE OUTFALL



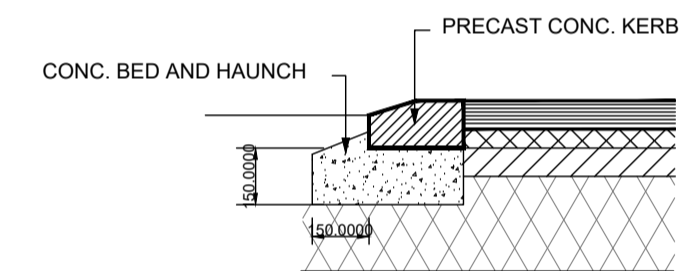
Concrete Footpath-Typical Detail
Scale 1:20

NOTES:

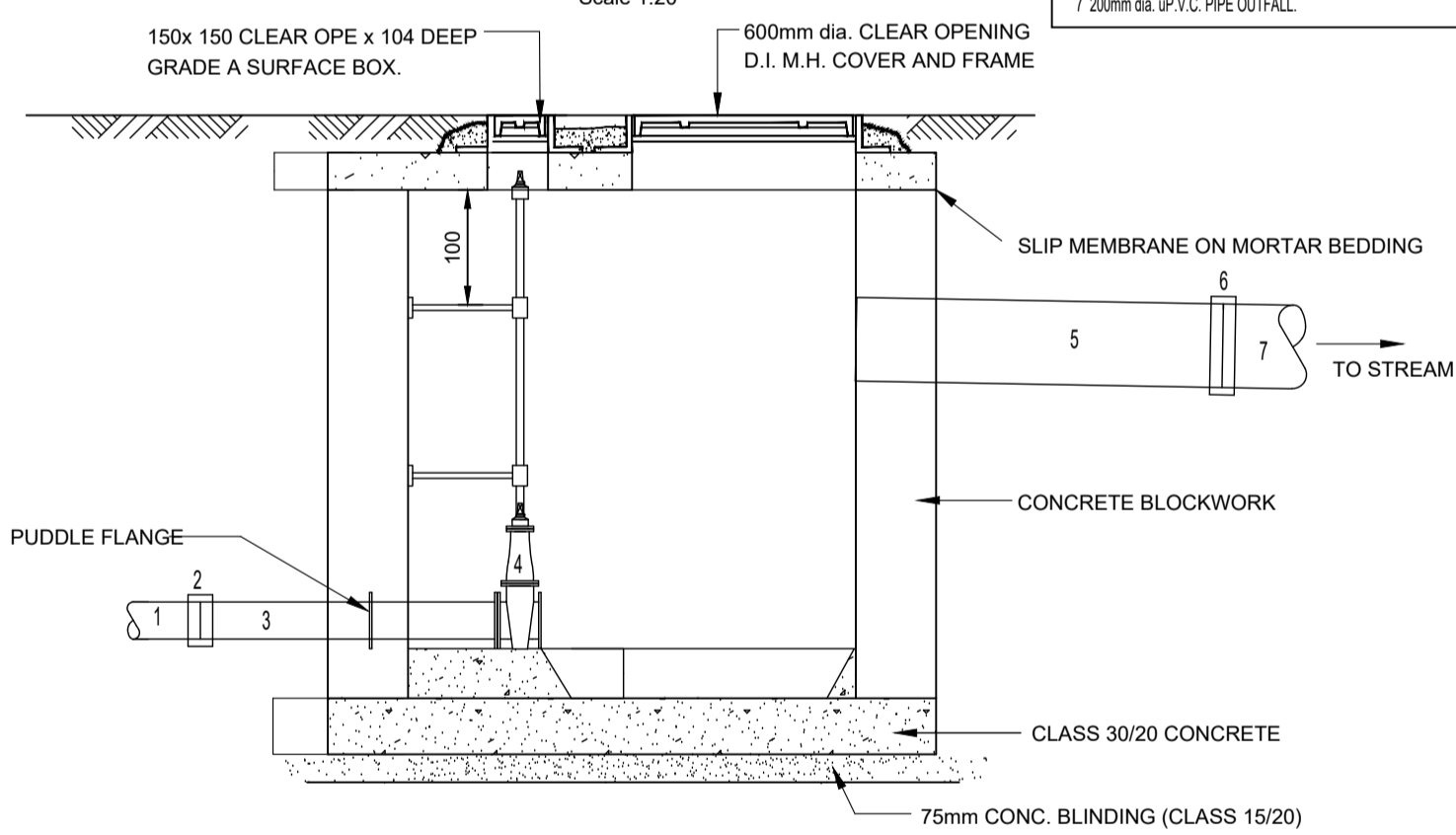
- JOINTS TO HAVE A MAXIMUM SPACING OF 3m (to coincide with joints in the kerbs).
- CONCRETE TO BE GRADE 30N/m³.
- SUB-BASE TO BE TYPE B TO NATIONAL ROADS AUTHORITY SPECIFICATION FOR ROADWORKS.
- SEALANT TO BE COLPOR 200 (EXPANDITE LIMITED) OR SIMILAR APPROVED.
- CROSS SLOPE OF 2.5% ON FOOTPATH TOWARDS ROADWAY OR AS SPECIFIED BY THE ENGINEER.
- AT VEHICLE ACCESS POINTS, CONCRETE TO BE REINFORCED WITH WITH A393 MESH REINFORCEMENT TOP AND BOTTOM.
- ALL CONCRETE EDGES AND JOINTS SHALL BE BULLNOZZED WITH A TROWEL.



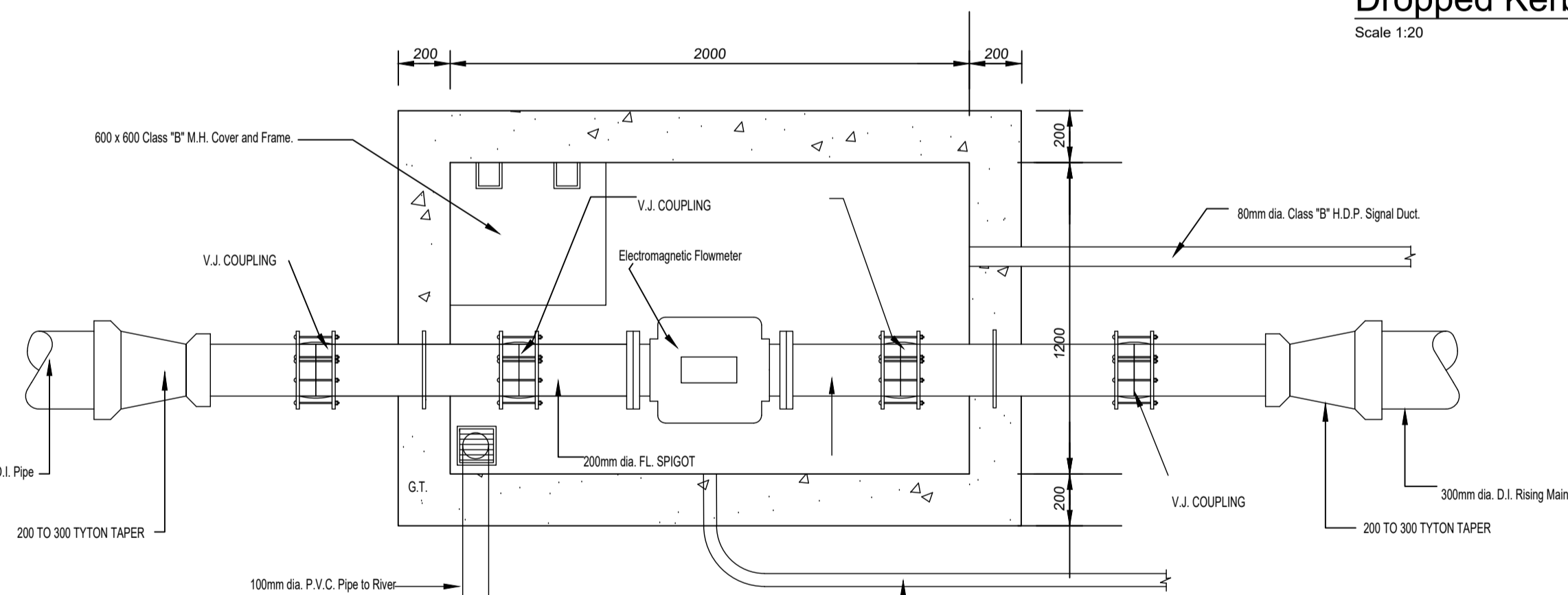
TYPICAL KERB DETAIL
Scale 1:20



Dropped Kerb Detail
Scale 1:20



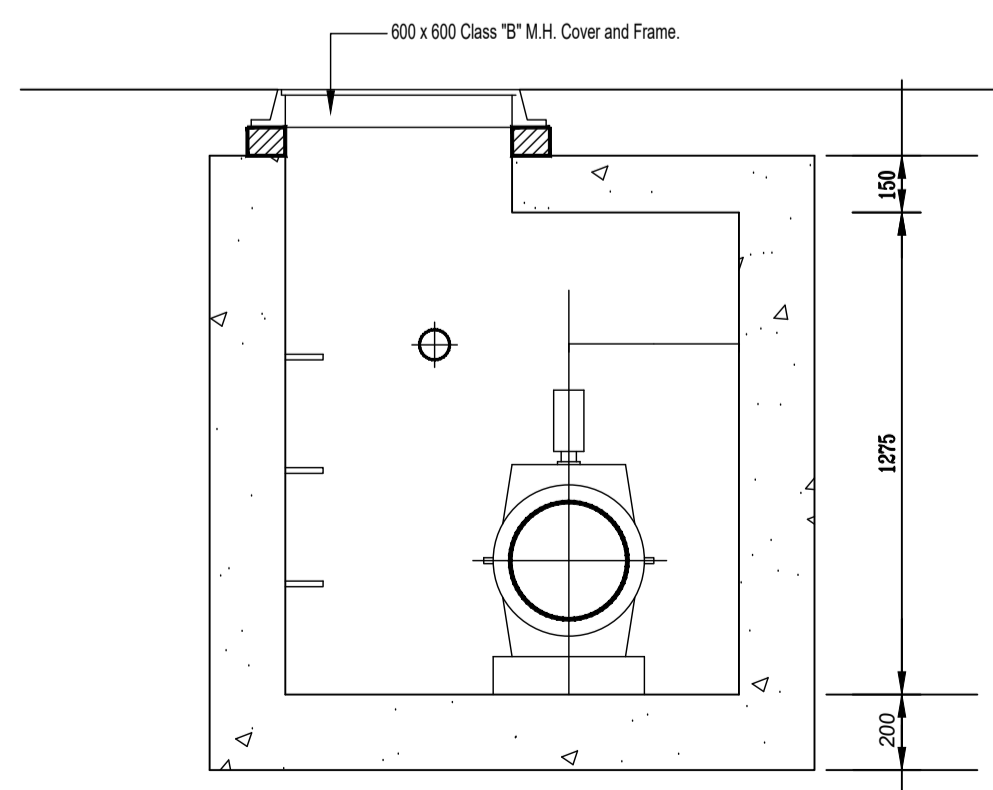
SECTION THROUGH SCOUR OUT VALVE
Scale 1:20



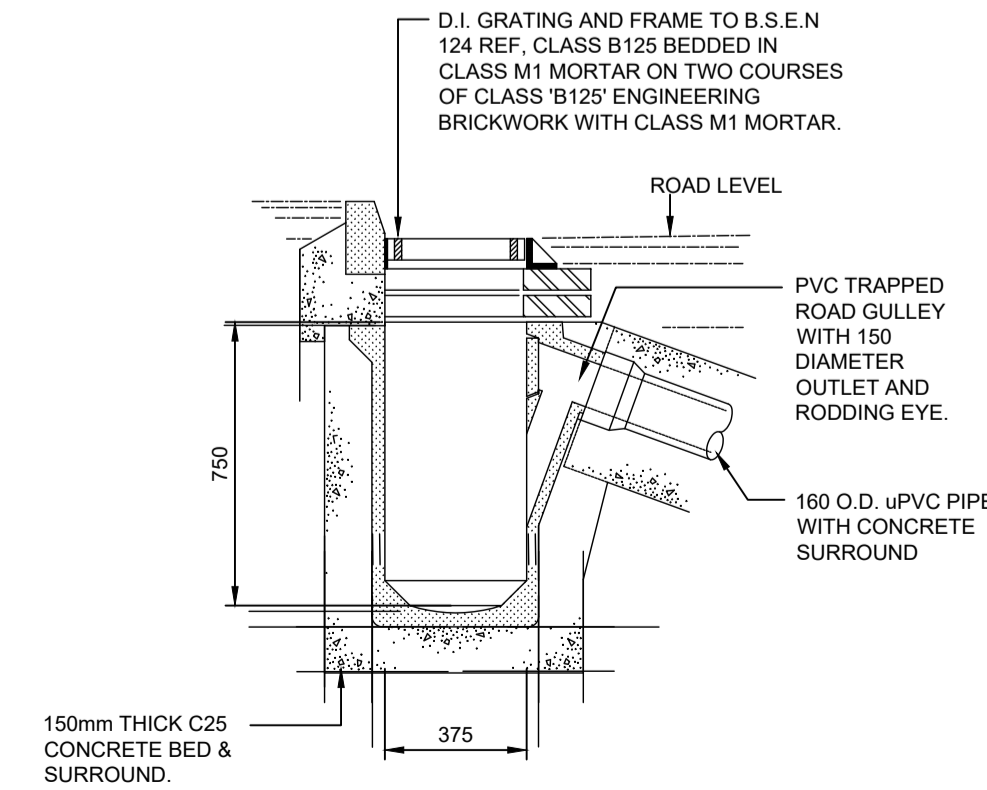
Plan
Scale 1:20

Water Meter Chamber Details
Scale 1:20

- NOTE:**
- ALL SEWERS TO BE CONCRETE S&S.
 - MINIMUM COVER OF 1.2m TO ALL SEWER PIPES. WHERE THIS IS NOT ACHIEVABLE PIPES TO BE BEDDED AND SURROUNDED IN MINIMUM 150mm CONCRETE.
 - FILL MATERIAL UNDER NEW ROADS TO BE 150mm CLEAN STONE CAPPED WITH MINIMUM 200mm COMPACTED CL. 804.



Typical Section
Scale 1:20



TYPICAL ROADGULLY DETAIL
Scale 1:20

PL -	FIRST ISSUE	23/09/22	JS
REV.	DESCRIPTION	DATE	BY

CLIENT	Galway County Council
JOB	Ardrahan Housing Development
TITLE	Watermain & Wastewater Details



SCALES	AS SHOWN	DRG. No.
DATE	02/04/19	18337/CE/008/PL
DRAWN	JS	
CHECKED	TMcK	
APPROVED	TMcK	