

EXISTING WASTEWATER TREATMENT PLANT (EXISTING 100 PE TREATMENT PLANT BY EPS). EPS HAVE PROVIDED CONFIRMATION THAT THE EXISTING PLANT AND PERCOLATION AREA ARE CAPABLE OF ACCOMMODATING THE ADDITIONAL LOADINGS BASED ON A POSSIBLE 12 UNITS. AS NOTED IT IS PROPOSED TO PROVIDE 10 UNITS IN THE PROPOSED DEVELOPMENT.

PROPOSED 90mm Ø RISING MAIN FROM PROPOSED PUMPING STATION TO POLISHING FILTER

FOR FULL DETAILS ON PROPOSED POLISHING FILTER, TREATMENT SYSTEM & PUMPING STATION PLEASE SEE DRAWINGS AND REPORT BY ROBBIE GANNON SITE SERVICES

EXISTING PERCOLATION AREA

EXISTING STONE ACCESS TRACK TO WASTEWATER TREATMENT PLANT

EXISTING FOUL MH35  
CL = 29.400m  
IL = 27.520m  
IL = 27.300m

EXISTING 225Ø UPVC

EXISTING FOUL MH34  
CL = 29.550m  
IL = 27.700m  
IL = 27.480m

EXISTING FOUL MANHOLE AND SEWER LINE TO BE REMOVED AND DIVERTED AS SHOWN

EXISTING FOUL MH33  
CL = 30.770m  
IL = 29.110m  
IL = 29.905m

EXISTING SURFACE MH32  
CL = 30.770m  
IL = 29.400m  
IL = 29.220m  
IL = 29.175m

EXISTING SURFACE MH28

EXISTING FOUL MH29

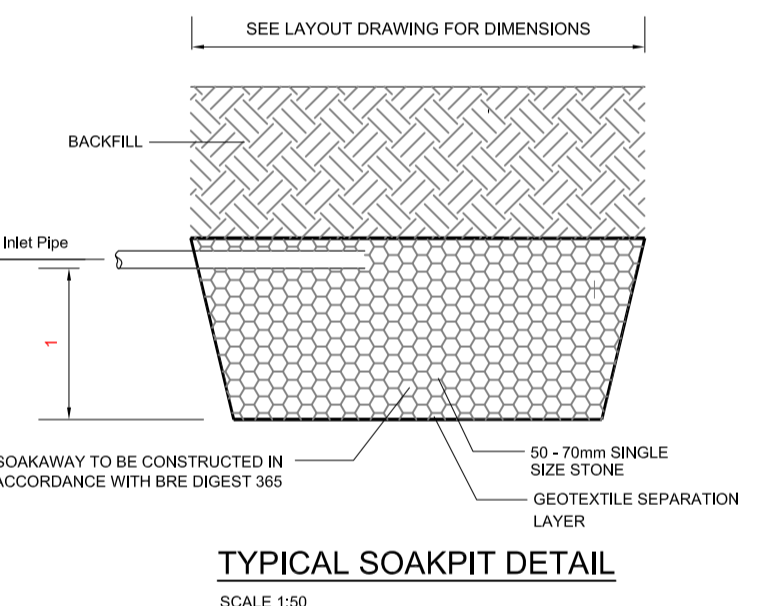
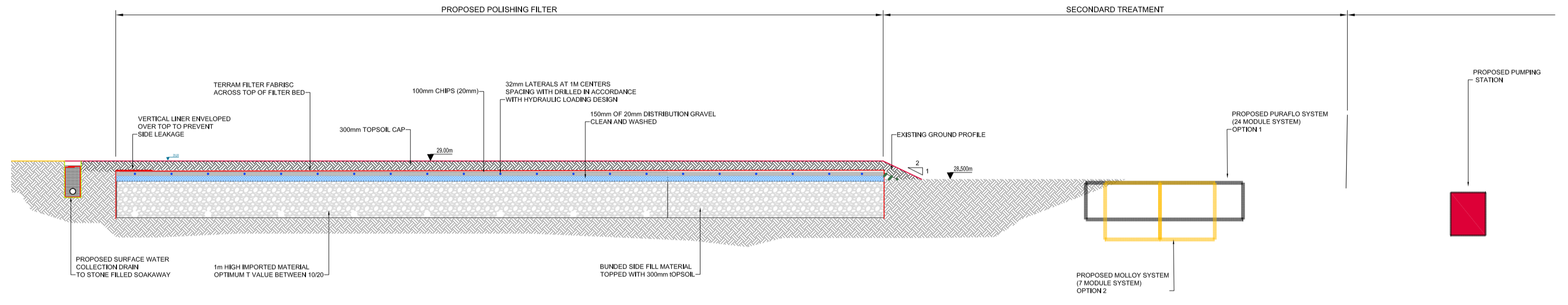
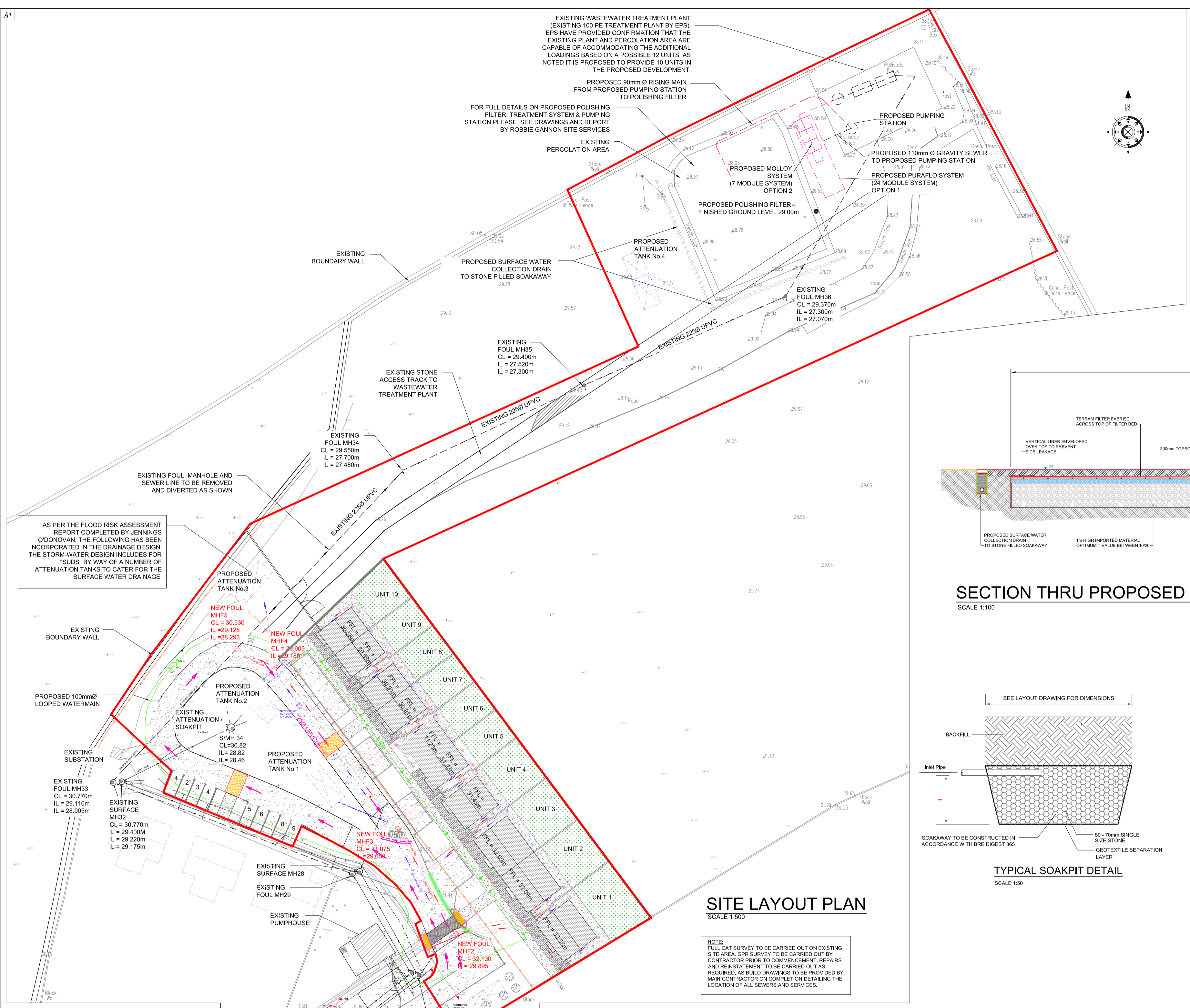
EXISTING PUMPHOUSE

ALL WORK TO BE CARRIED OUT IN STRICT ACCORDANCE WITH CURRENT BUILDING REGULATIONS - AS PER THE BUILDING CONTROL REGULATIONS 1997-2014 & THE BUILDING REGULATIONS 1997-2017 WITH REFERENCE TO UPDATES TO THE TECHNICAL GUIDANCE DOCUMENTS AS PER THE DEPARTMENT OF ENVIRONMENT, HERITAGE & LOCAL GOVERNMENT.

**IRISH WATER NOTES & DETAILS**

1. ATTACHED NOTES AND DETAILS ON WATERMAIN AND WASTEWATER EXTRACTED FROM FOLLOWING IRISH WATER DOCUMENTS:  
- WATER INFRASTRUCTURE STANDARD DETAILS: CONNECTION AND DEVELOPER SERVICES: JULY 2020 (REVISION 04) AS AMENDED.  
- WASTEWATER INFRASTRUCTURE STANDARD DETAILS: CONNECTIONS AND DEVELOPER SERVICES: JULY 2020 (REVISION 04) AS AMENDED.

- GENERAL NOTES**
- THIS DRAWING IS TO BE READ IN CONJUNCTION WITH ALL RELEVANT ENGINEERS ARCHITECTS AND SERVICE ENGINEERS DRAWINGS AND SPECIFICATION.
  - DO NOT SCALE USE FIGURE DIMENSIONS ONLY.
  - ALL LEVELS ARE STRUCTURAL UNLESS NOTED OTHERWISE.
  - ALL DRAWINGS TO BE CHECKED BY THE CONTRACTOR PRIOR TO THE COMMENCEMENT OF WORKS AND PRIOR TO COMMENCEMENT OF ANY MATERIALS BEING ORDERED AND ANY DISCREPANCIES TO BE BROUGHT TO THE ATTENTION OF THE DESIGNERS IMMEDIATELY.
  - THE CONTRACTOR IS RESPONSIBLE FOR THE TEMPORARY SUPPORT OF ALL WORK.
- ALL FILL MATERIAL TO COMPLY WITH SPECIFICATION FOR ROAD WORKS SERIES 800 (NRA)
- ALL EXCAVATIONS AND ROCK BREAKING TO BE CARRIED OUT IN STRICT ACCORDANCE WITH THE SPECIFICATION AND IN STRICT ACCORDANCE WITH SERIES 600, SPECIFICATIONS FOR ROADWORKS AS PUBLISHED WITH THE NRA



**LONGITUDINAL SECTION - NEW SURFACE SEWER (S2 TO S4)**  
SCALE 1:200

CHAINAGE	COVER LEVEL	INVERT LEVEL	CHAINAGE	COVER LEVEL	INVERT LEVEL
0.00m	32.100m	30.225m	27.597m	31.150m	29.400m
			44.387m	30.800m	29.580m

**LONGITUDINAL SECTION - EX FOUL SEWER**  
SCALE 1:200

CHAINAGE	COVER LEVEL	INVERT LEVEL	CHAINAGE	COVER LEVEL	INVERT LEVEL
0.00m	30.770m	29.110m	37.438m	29.550m	27.700m
			87.179m	27.480m	27.480m

**LONGITUDINAL SECTION - NEW FOUL SEWER (F2 TO F5)**  
SCALE 1:200

CHAINAGE	COVER LEVEL	INVERT LEVEL	CHAINAGE	COVER LEVEL	INVERT LEVEL
0.00m	32.200m	29.895m	24.530m	31.075m	29.650m
			66.030m	30.600m	29.188m
				30.530m	29.128m
				28.293m	28.293m

**LONGITUDINAL SECTION - NEW SURFACE SEWER (S5 TO S6)**  
SCALE 1:200

CHAINAGE	COVER LEVEL	INVERT LEVEL	CHAINAGE	COVER LEVEL	INVERT LEVEL
0.00m	30.800m	29.280m	12.800m	30.600m	29.138m

PLANNING ISSUE  
30.11.22

REV.	DESCRIPTION	DATE	BY
PL 7	PLANNING ISSUE - STAGE 2	30/11/22	JS
PL 6	PLANNING ISSUE - STAGE 2	23/11/22	JS
PL 5	PLANNING ISSUE - STAGE 2	22/11/22	JS
PL 4	PLANNING ISSUE - STAGE 2	30/09/22	JS
PL 3	PLANNING ISSUE - STAGE 2	23/09/22	JS
PL 2	PLANNING ISSUE - STAGE 2	20/04/22	JS
PL 1	PLANNING ISSUE - LAYOUT REVISED	19/01/22	JS
PL -	PLANNING ISSUE	07/10/21	JS

CLIENT	Galway County Council
JOB	Ardrahan Housing Development
TITLE	Site Plan & Longitudinal Sections



DATE	SCALE	AS SHOWN	DRG. No.
02/04/19			18337/CE/005/PL7
DRAWN	JS		
CHECKED	TMcK		
APPROVED	TMcK		