



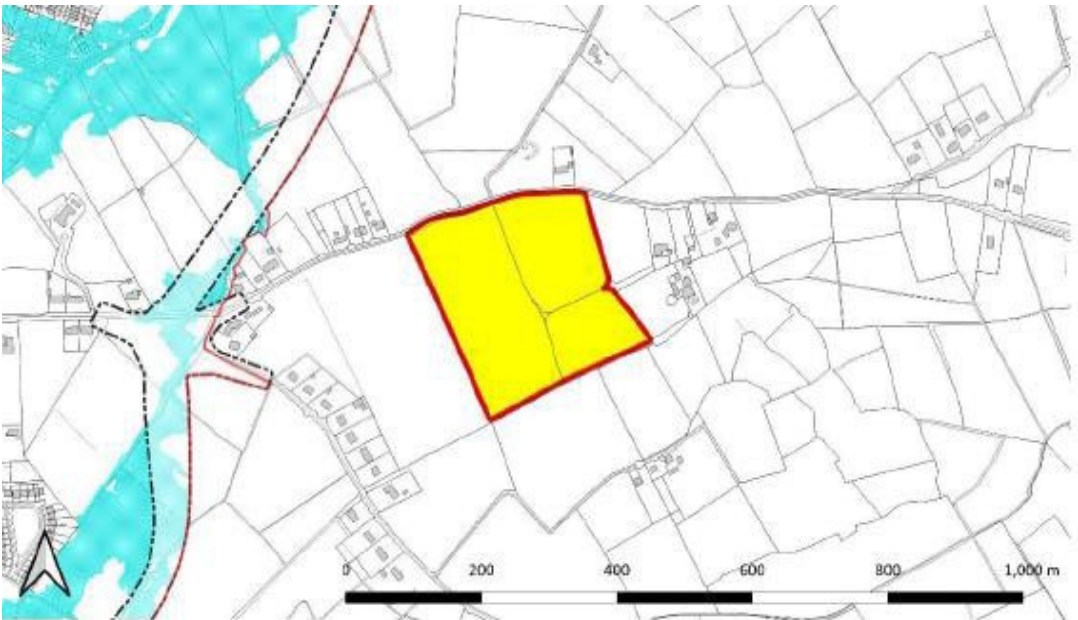
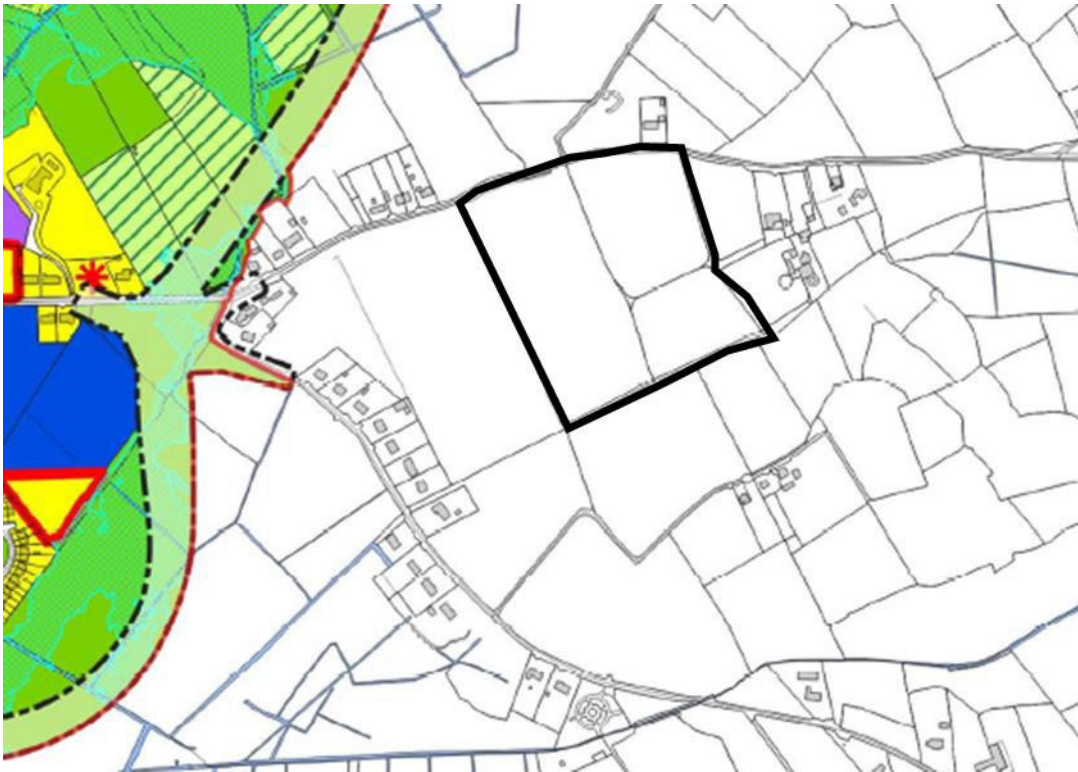
Comhairle Chontae na Gaillimhe  
Galway County Council

# **Athenry Local Area Plan** 2024-2030

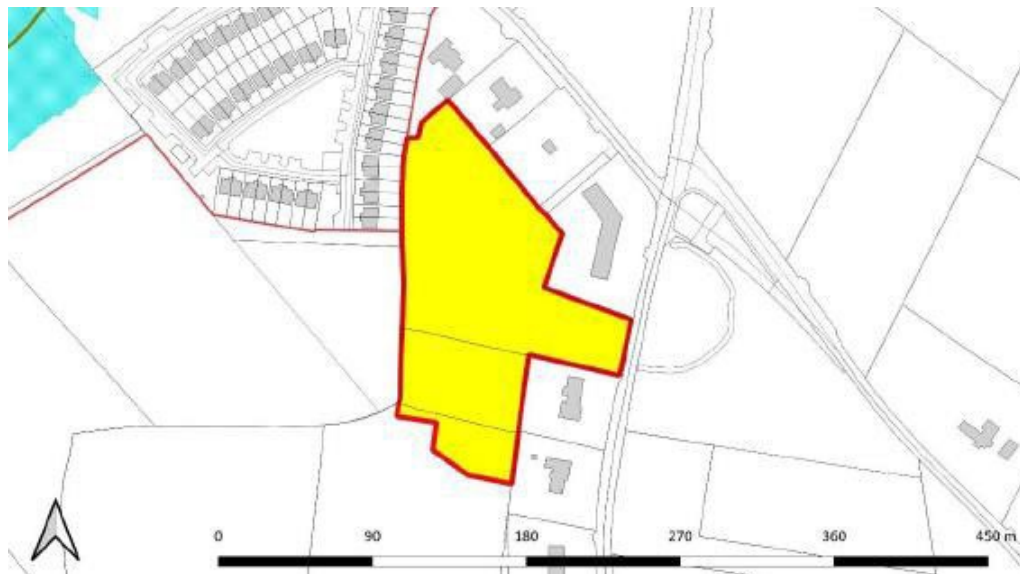
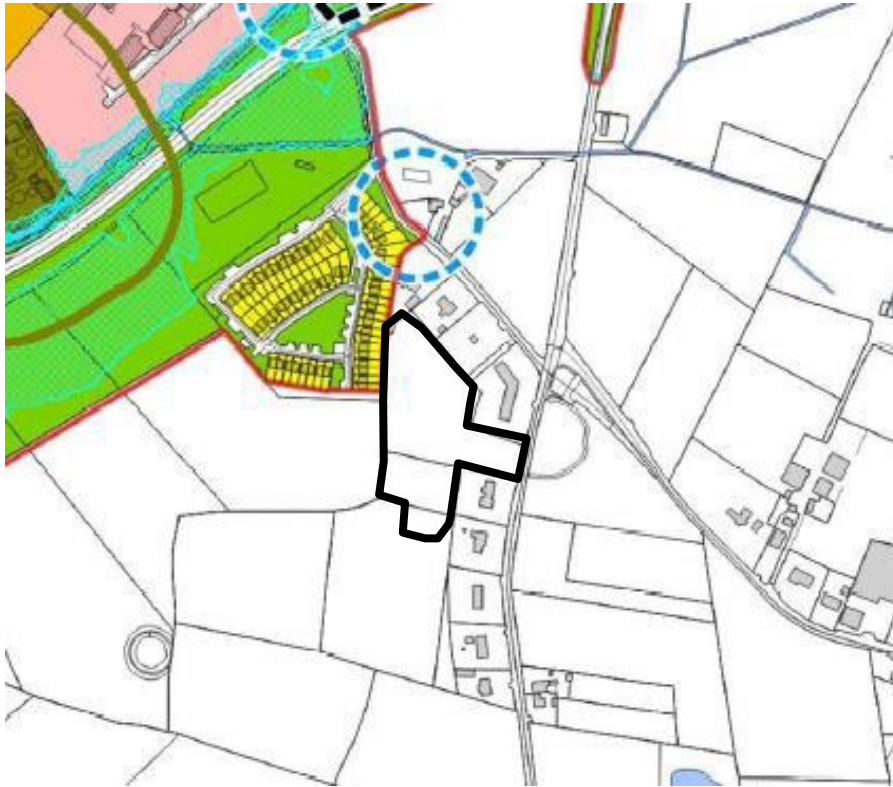
February 2024

Particulars of Draft Direction

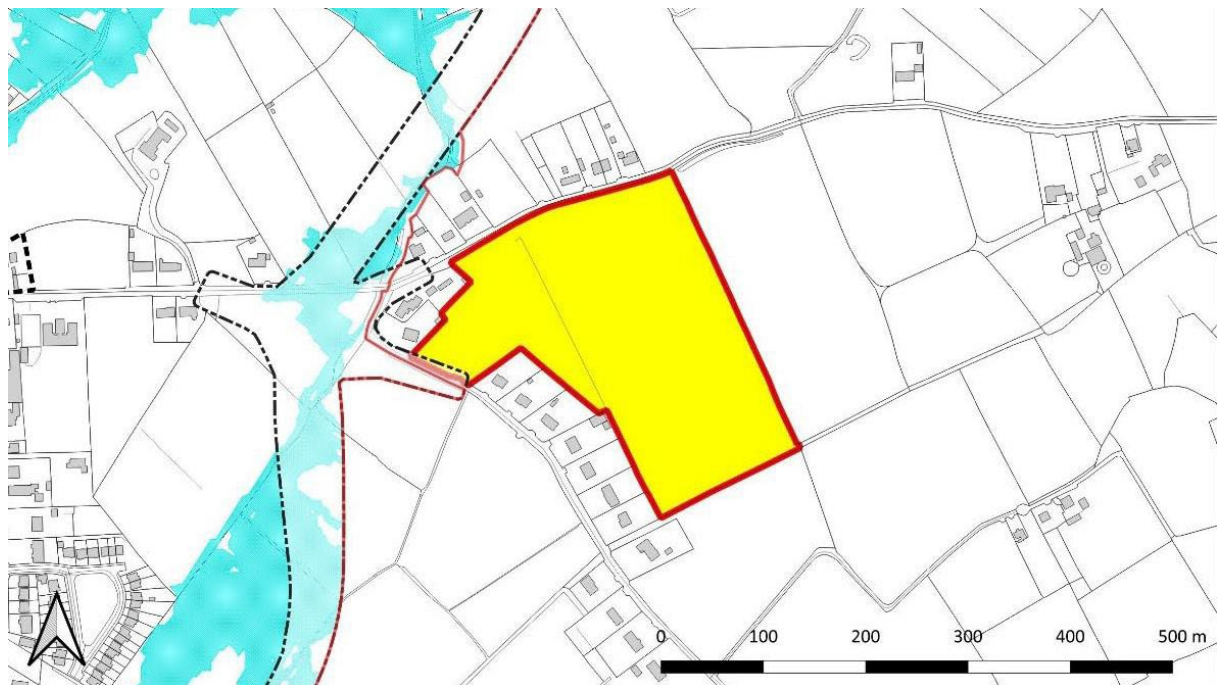
- i. **Material Alteration 46 – i.e. the subject lands revert to Outside the Settlement Boundary from Residential Phase 1 as per the Draft Local Area Plan;**



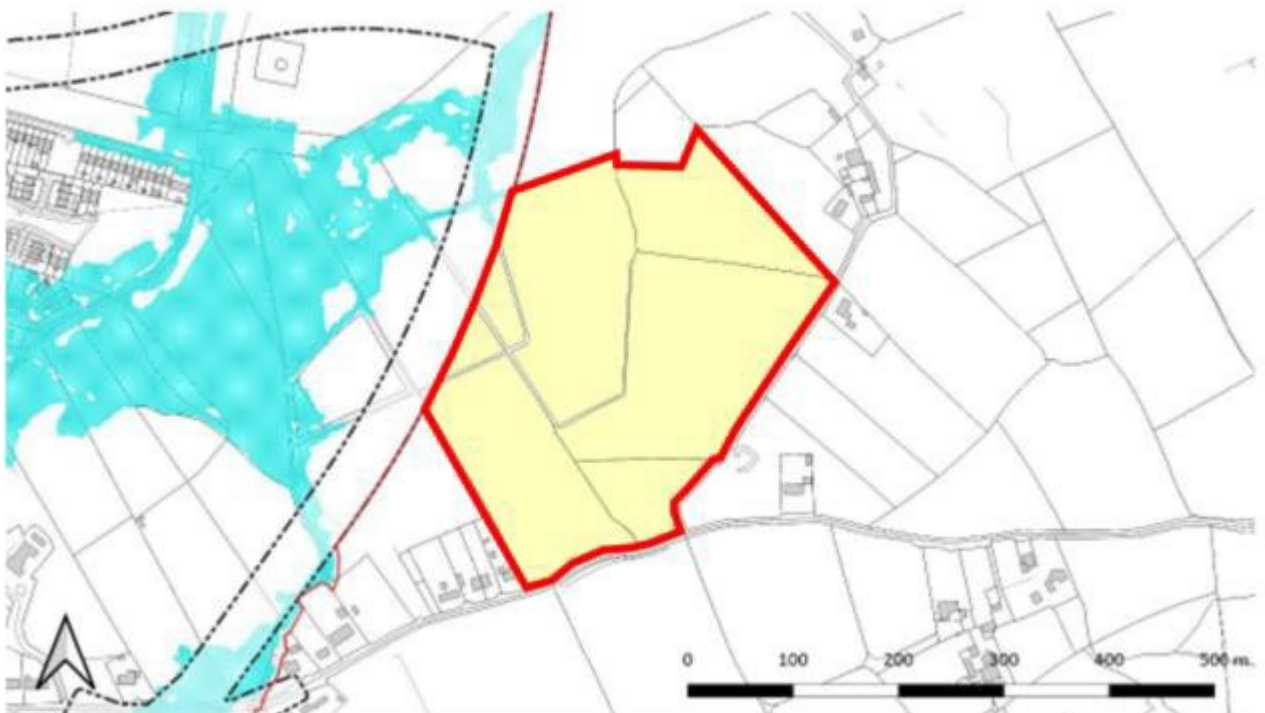
- ii. **Material Alteration 47 – i.e. the subject lands revert to Outside the Settlement Boundary from Residential Phase 1 as per the Draft Local Area Plan;**



- iii. **Material Alteration 49 – i.e. the subject lands revert to Outside the Settlement Boundary from Residential Phase 1 as per the Draft Local Area Plan;**



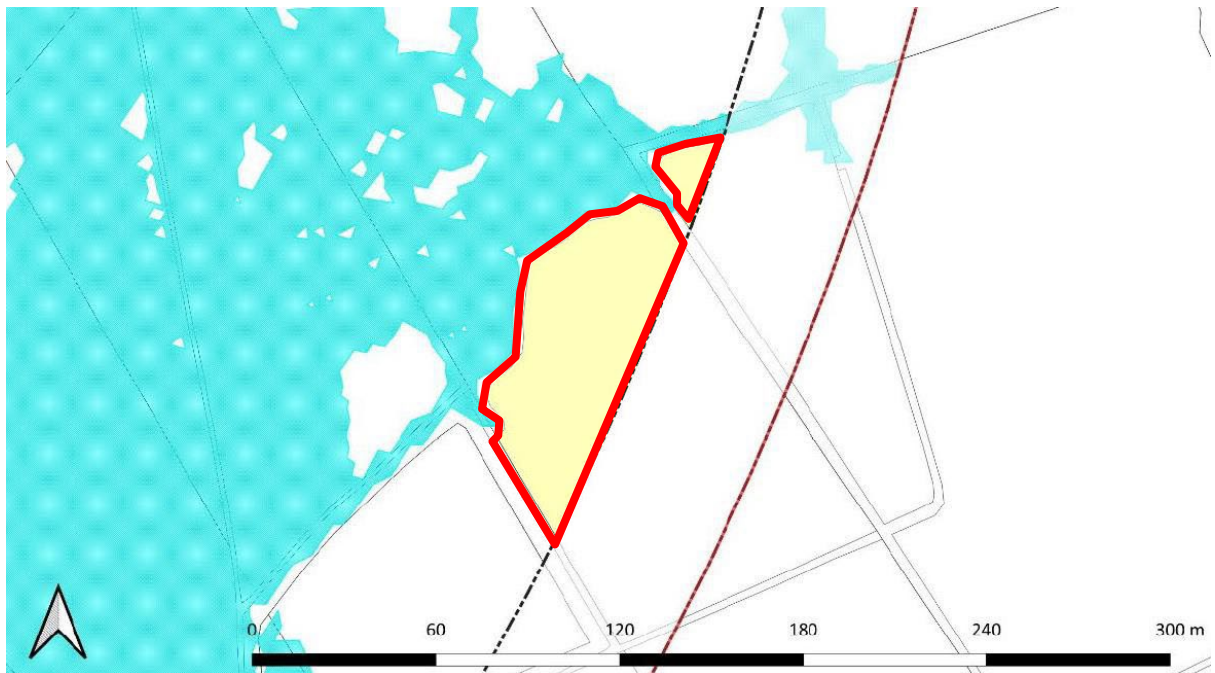
- iv. **Material Alteration 51 – i.e. the subject lands revert to Outside the Settlement Boundary from Residential Phase 2 as per the Draft Local Area Plan;**



- v. Material Alteration 60 – i.e. the subject lands revert to Agriculture from Residential Phase 2 as per the Draft Local Area Plan;



- vi. **Material Alteration 50 – i.e. the subject lands revert to Open Space/Recreation & Amenity from Residential Phase 2 as per the Draft Local Area Plan;**



- vii. **Material Alteration 59 – i.e. the subject lands revert to Open Space/Recreation & Amenity from Residential Phase 2 as per the Draft Local Area Plan;**





viii. **Material Alteration 48 – i.e. the subject lands revert to Outside the Settlement Boundary from Residential Phase 1 as per the Draft Local Area Pan**



# Aerial View of 8 Sites in Context

