

| Calculation Summary | | | | | | | | | |
|---------------------|-------|-----|-----|---------|---------|-------|---------|---------|-------|
| Description | Avg | Max | Min | Min/Avg | Min/Max | Units | PtSpcLr | PtSpcTb | # Pts |
| Carpark | 20.26 | 49 | 6 | 0.30 | 0.12 | Lux | 3 | 3 | 111 |
| Yard | 22.90 | 74 | 6 | 0.26 | 0.08 | Lux | 2.5 | 2.5 | 274 |

| Luminaire Schedule | | | | | | |
|--------------------|-----|-------|-------------|-------|---|-------------------|
| Symbol | Qty | Label | Lum. Lumens | MF | Description | Filename |
| | 3 | A15A | 21050 | 0.840 | AkraLED 150w LED, 4K, Asymmetric | 5SF150LBA.ies |
| | 3 | A6A | 8785 | 0.840 | AkraLED 60w LED, 4K, Asymmetric | 5SF060LBA.ies |
| | 1 | D7F2 | 9586 | 0.840 | Durostar 70w LED 4K Forward Throw 2 Optic | 5DRS10LGA-FT2.ies |
| | 1 | D7 | 9351 | 0.840 | Durostar 70w LED 4K Street Optic | 5DRS10LGA.ies |

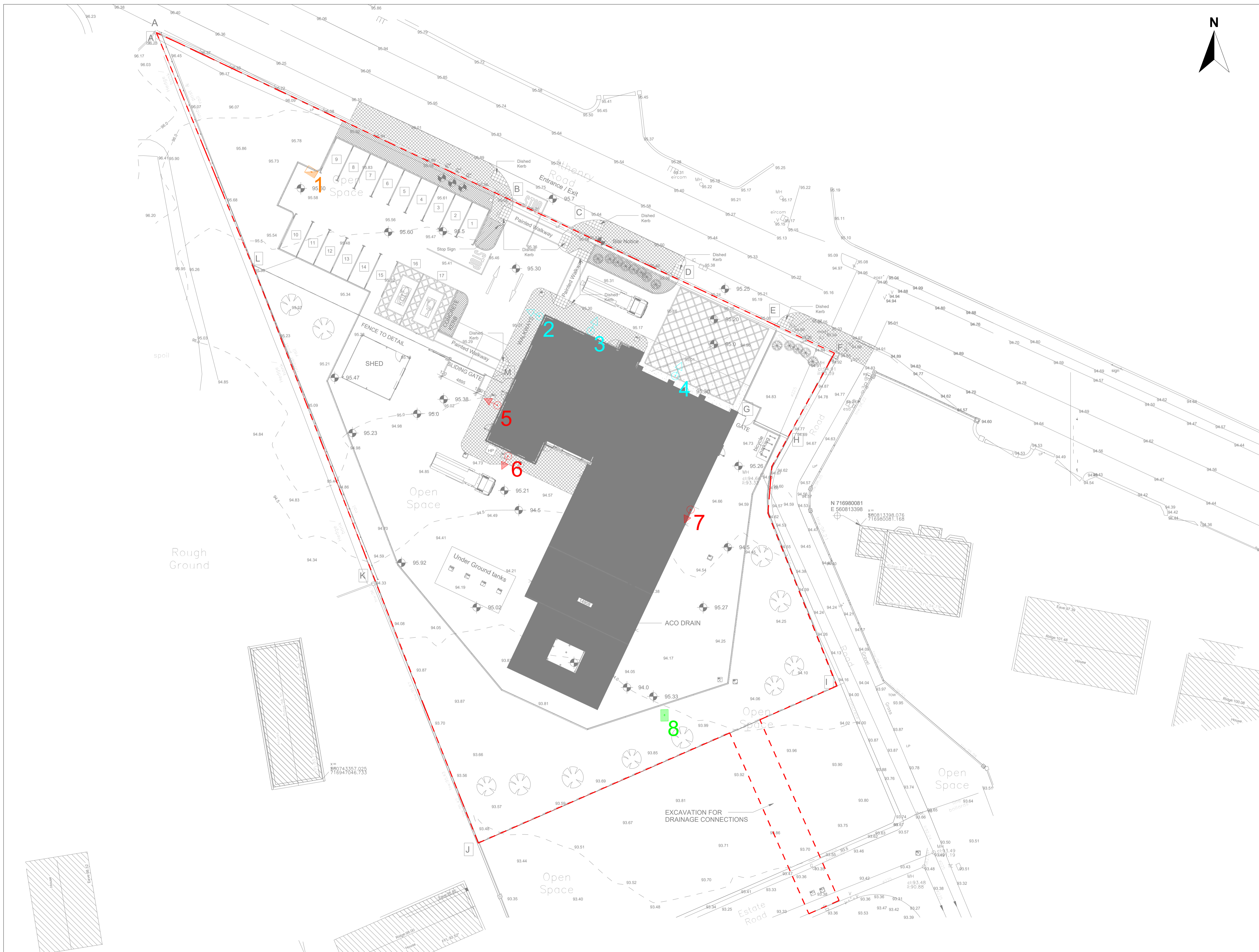
- Notes:
1. Do NOT scale from this drawing.
 2. The actual results achieved may vary from predicted values due to normal deviation in luminaire installation, electrical supply, equipment tolerances, obstructions including poles, brackets and mounting arms, reflectances etc.
 3. This design is based on a preliminary assessment only and will be developed during the detailed design stage.

| Luminaire Location Summary | | | | | | |
|----------------------------|-------|------|-------|---|--------|------|
| LumNo | Label | X | Y | Z | Orient | Tilt |
| 1 | D7F2 | 46 | 107.4 | 8 | 328 | 5 |
| 2 | A6A | 75.9 | 88.5 | 8 | 153 | 15 |
| 3 | A6A | 82.3 | 86.5 | 8 | 65 | 0 |
| 4 | A6A | 93.4 | 80.8 | 8 | 65 | 0 |
| 5 | A15A | 70.4 | 76.9 | 8 | 153 | 15 |
| 6 | A15A | 72 | 71.2 | 8 | 245 | 15 |
| 7 | A15A | 95.4 | 63.4 | 8 | 245 | 15 |
| 8 | D7 | 92 | 36.6 | 8 | 91 | 0 |
| Total Quantity: 8 | | | | | | |



PUBLIC LIGHTING

Notes:
 Except from the Guidebook for housing schemes. Refer to complete document for all details required.
 All ESB infrastructure is to be installed in accordance with ESB publication "Guidebook for housing schemes"



| Rev | Description | Date | Out |
|-----|---------------------|----------|-----|
| 02 | Issued for Planning | 18.07.24 | BC |
| 01 | Issued for Planning | 07.12.23 | RK |
| 00 | Issued for Planning | 11.06.23 | RK |



Coffey Consulting Engineering
 Block A, Marinstown Business Park, Mullingar, Co. Westmeath
 N91 1616 Ireland
 +353(0)449310255
 info@coffey.ie
 www.coffey.ie

Client: **Loughrea Fire Station, Co. Galway**

Title: **Public Lighting Layout**

Drawing no.: **LFS-DR-CCE-EE-0100**

Approved: BC Checked: RK Drawn: VV
 Scale: 1:500
 Size: A1

Copyright © 2024 Coffey Engineering Consultants
 No part of this document may be reproduced or transmitted in any form or by any means electronic or mechanical, including photocopying, recording, or by any information storage and retrieval system, without the prior written permission of Coffey Engineering Consultants. All rights reserved. This document is the property of Coffey Engineering Consultants and is loaned to you for your use only. It is not to be distributed, copied, or otherwise used for any other purpose without the prior written permission of Coffey Engineering Consultants.