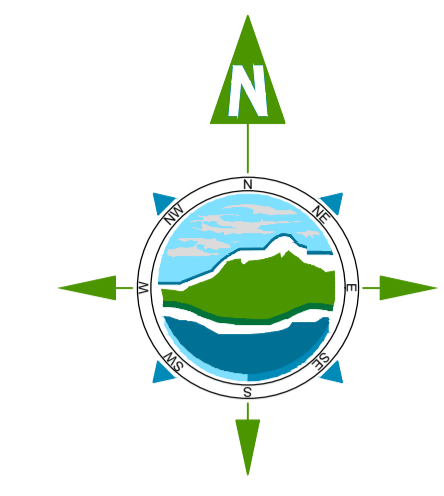


THE INFORMATION ON THIS DRAWING IS TO THE ORDNANCE SURVEY IRELAND ITM COORDINATE SYSTEM



- PROPOSED MACADAM SURFACE
- CONCRETE FOOTPATH
- LANDSCAPED AREA - REFER TO ARCHITECT'S SPECIFICATION FOR DETAILS
- CONCRETE YARD SLAB
- PRECAST CONCRETE KERB LINE
- PROPOSED DROP KERB
- TACTILE PAVING

- NOTES**
GENERAL:
1. FIGURED DIMENSIONS ONLY TO BE TAKEN FROM THIS DRAWING
 2. ALL DRAWINGS TO BE CHECKED BY THE CONTRACTOR ON SITE
 3. ENGINEER TO BE INFORMED BY THE CONTRACTOR OF ANY DISCREPANCIES BEFORE ANY WORK COMMENCES
 4. THIS DRAWING IS TO BE READ IN CONJUNCTION WITH RELEVANT DRAWINGS AND SPECIFICATIONS.
 5. ALL LEVELS SHOWN RELATE TO ORDNANCE SURVEY DATUM AT MALIN HEAD

Rev	Date	Description	By	Chkd.
P0-1	07.08.2024	ISSUE FOR PLANNING	GM	MG

Client: **Comhairle Chontae na Gaillimhe**
Galway County Council

Project:
Loughrea Fire Station

Title:
Proposed Roads Layout

Scale @ A1: **1:250**

Prepared by:	Checked:	Date:
GM	MG	Aug 2024

Project Director: **B. Carroll**

Drawing Status: **Planning**

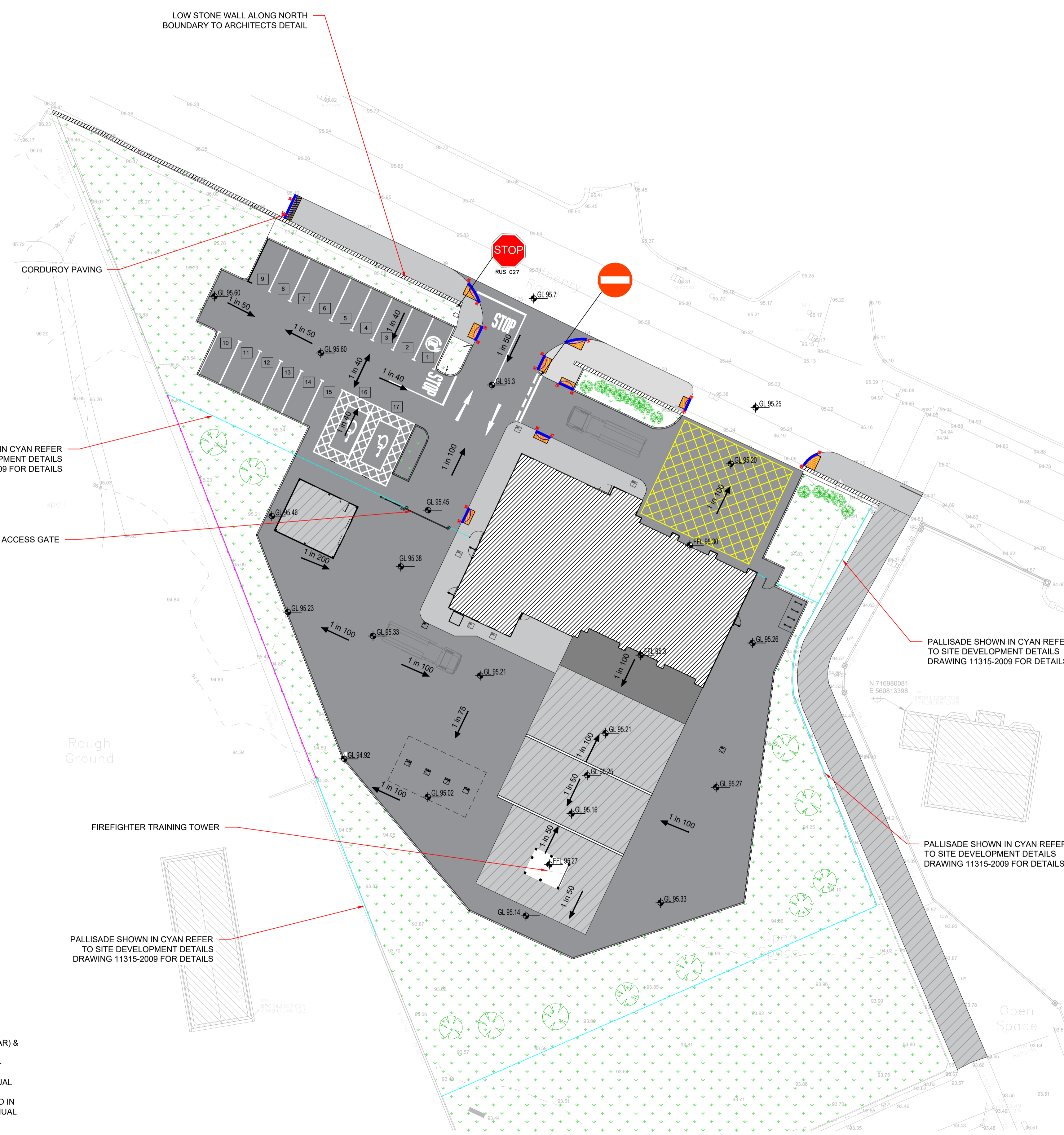
TOBIN
CONSULTING ENGINEERS

Galway Office
Fairgreen House, Fairgreen Road,
Galway,
H91 AXK8,
Ireland.

Tel: +353 (0)91 565 211
www.tobin.ie

TOBIN Consulting Engineers will not be liable for any use of this document for any purpose other than that for which it was originally prepared and provided. Except where specifically and explicitly agreed in writing by TOBIN Consulting Engineers, an copyright holder, no part of this document may be reproduced or transmitted in any form and this document shall not be relied upon by any third party for any purpose.

Revision:
Drawing No.: **LFS-DR-TOB-CE-2003** **P0-1**



LOW STONE WALL ALONG NORTH BOUNDARY TO ARCHITECTS DETAIL

CORDUROY PAVING

PALLISADE SHOWN IN CYAN REFER TO SITE DEVELOPMENT DETAILS DRAWING 11315-2009 FOR DETAILS

ROLLER SECURITY ACCESS GATE

Rough Ground

FIREFIGHTER TRAINING TOWER

PALLISADE SHOWN IN CYAN REFER TO SITE DEVELOPMENT DETAILS DRAWING 11315-2009 FOR DETAILS

PALLISADE SHOWN IN CYAN REFER TO SITE DEVELOPMENT DETAILS DRAWING 11315-2009 FOR DETAILS

PALLISADE SHOWN IN CYAN REFER TO SITE DEVELOPMENT DETAILS DRAWING 11315-2009 FOR DETAILS

Open Space

NOTE:

ALL LINE MARKING IS TO BE MARKED WITH THERMOPLASTIC PAINT (RMS TYPE OR SIMILAR) & IS TO COMPLY WITH:

- IS. EN. 1871: ROAD MARKING MATERIALS - PHYSICAL PROPERTIES
- CHAPTER 7 OF THE TRAFFIC SIGNS MANUAL

ALL SIGNAGE IS TO BE SUPPLIED & INSTALLED IN ACCORDANCE WITH THE TRAFFIC SIGNS MANUAL