



Comhairle Chontae na Gaillimhe **Galway County Council**

Information Leaflet

Dunmore River Walk - Dunmore



Upper right: 551820E 763911N m

Lower left: 550385E 763096N m

Galway County Council

Dunmore River Walk - Location Map

Scale: 1:5,000

Date: 06/03/2025

Includes Ordnance Survey Ireland data reproduced under OSI Licence number Galway County Council/2020/OSI_NMA_090. © Ordnance Survey Ireland, 2023.



Administrative Boundaries

 Administrative Boundaries

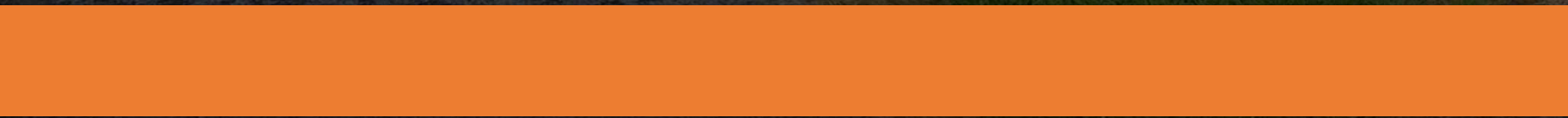


Existing Park





Existing Park





Existing Park



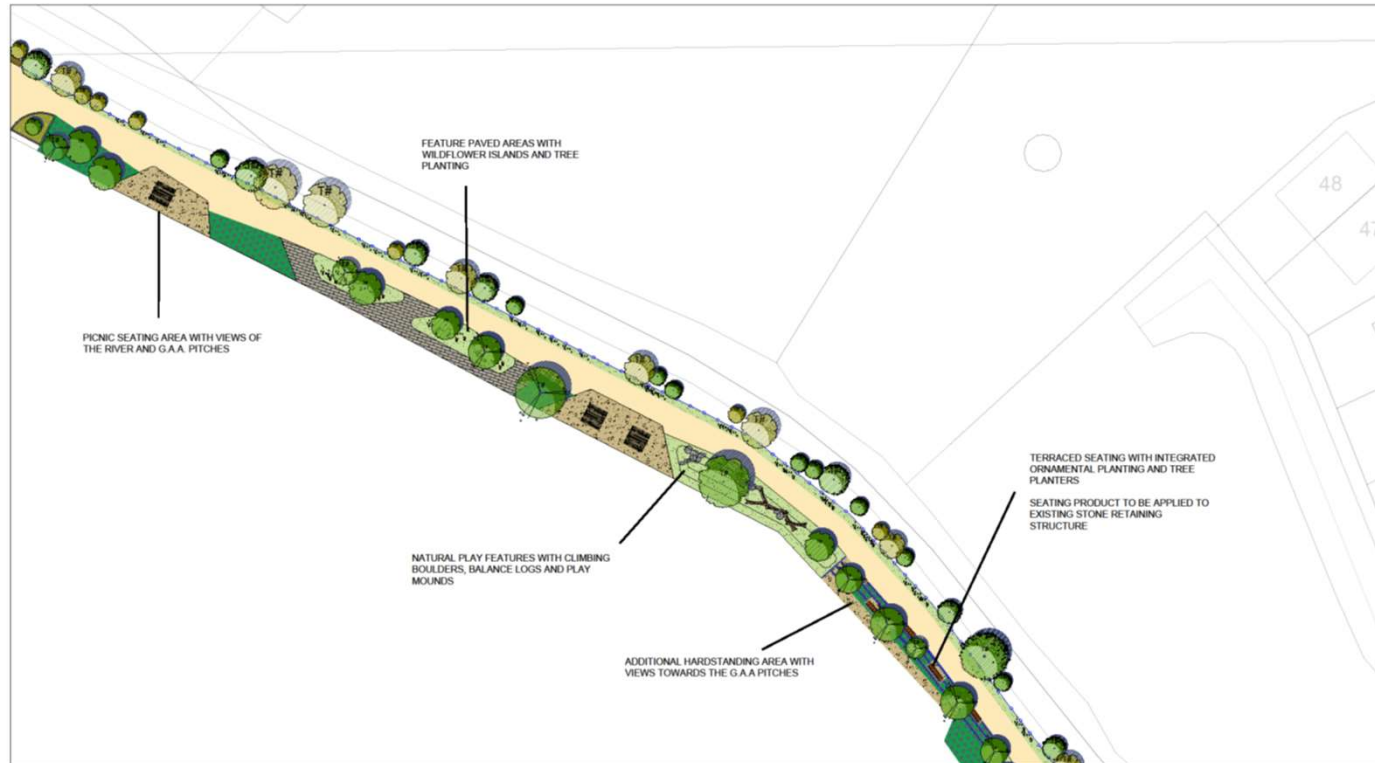




LEGEND & INDICATIVE PLANTING SCHEDULE:

<p>Proposed Riverside Trees (A) River poplar 10' 10cm girth, 8m to 10m (B) Downy birch 10' 10cm girth, 8m to 10m (C) Dog rose 10' 10cm girth, 8m to 10m (D) Red rose 10' 10cm girth, 8m to 10m</p> <p>Proposed Overbank Trees (E) European hornbeam 10' 10cm girth, 8m to 10m (F) American linden 10' 10cm girth, 8m to 10m (G) Small leaved lime 10' 10cm girth, 8m to 10m (H) European hornbeam 10' 10cm girth, 8m to 10m (I) Dog rose 10' 10cm girth, 8m to 10m (J) Red rose 10' 10cm girth, 8m to 10m</p> <p>Existing / Retained / Cleared Beech Hedgerows Apple spire</p> <p>Proposed Shrubs & Perennials Planting (K) Red rose 10' 10cm girth, 8m to 10m (L) Dog rose 10' 10cm girth, 8m to 10m (M) European hornbeam 10' 10cm girth, 8m to 10m (N) American linden 10' 10cm girth, 8m to 10m (O) Small leaved lime 10' 10cm girth, 8m to 10m</p>	<p>Native Wildflower Planting Native wildflower mix Supplier: Design by Nature or Similar</p> <p>Feature Shrub Planting (Excludes to OAS) (P) American linden 10' 10cm girth, 8m to 10m (Q) European hornbeam 10' 10cm girth, 8m to 10m (R) Dog rose 10' 10cm girth, 8m to 10m (S) Red rose 10' 10cm girth, 8m to 10m (T) Small leaved lime 10' 10cm girth, 8m to 10m</p> <p>Bank Planting (Only) (U) Dog rose 10' 10cm girth, 8m to 10m (V) Red rose 10' 10cm girth, 8m to 10m</p> <p>Natural Tree Features Existing tree and hedgerows, retained from site preparation where possible</p>	<p>Plastic Bench Supplier: Orlonix Product: OSL 2 Seat Material: Timber and metal</p> <p>Benches, Wall Seating Supplier: Orlonix Material: Timber and concrete</p> <p>Play Mat</p> <p>Riverbank Footpath Existing surface to be improved where possible</p>	<p>Feature Permeable Sealing Area Selected Permeable Pavers</p> <p>Reeds Board Ground Sealing</p> <p>Low Wall / Tree and Shrub Planter</p> <p>Stone Wall / Feature Steps</p>	<p>3.0m High Vertical Bar Zoning</p> <p>Access Point</p>
---	---	---	---	--

CURRANE STRATION REYNOLDS LAND PLANNING & DESIGN	
DUBLIN, CORK & GALWAY GARDINERS HOUSE, 24 SUFFOLK STREET, DUBLIN 2, D02 AF95 TEL: 01 451 2415 EMAIL: info@curranereynolds.ie	
PROJECT: DUNMORE RIVER WALK	DATE: DEC - 2025
DRAWING: Landscape Masterplan	SCALE: 1:200 @A1 DRAWN: DM CHECKED: VM DRAWING NO: 24380-1-101



LEGEND & INDICATIVE PLANTING SCHEDULE:

- Proposed Deciduous Trees**
 (A) Tree planting, 10' - 15m high, 10m to 15m wide
 (B) Tree planting, 15' - 20m high, 15m to 20m wide
 (C) Tree planting, 20' - 25m high, 20m to 25m wide
 (D) Tree planting, 25' - 30m high, 25m to 30m wide
- Proposed Coniferous Trees**
 (A) Tree planting, 10' - 15m high, 10m to 15m wide
 (B) Tree planting, 15' - 20m high, 15m to 20m wide
 (C) Tree planting, 20' - 25m high, 20m to 25m wide
 (D) Tree planting, 25' - 30m high, 25m to 30m wide
- Existing Established Deciduous Trees**
 (A) Tree planting, 10' - 15m high, 10m to 15m wide
 (B) Tree planting, 15' - 20m high, 15m to 20m wide
 (C) Tree planting, 20' - 25m high, 20m to 25m wide
 (D) Tree planting, 25' - 30m high, 25m to 30m wide
- Proposed Shrubs & Perennials Planting**
 (A) Tree planting, 10' - 15m high, 10m to 15m wide
 (B) Tree planting, 15' - 20m high, 15m to 20m wide
 (C) Tree planting, 20' - 25m high, 20m to 25m wide
 (D) Tree planting, 25' - 30m high, 25m to 30m wide

- Native Wildflower Planting**
 (A) Tree planting, 10' - 15m high, 10m to 15m wide
 (B) Tree planting, 15' - 20m high, 15m to 20m wide
 (C) Tree planting, 20' - 25m high, 20m to 25m wide
 (D) Tree planting, 25' - 30m high, 25m to 30m wide
- Feature Stone Planting**
 (A) Tree planting, 10' - 15m high, 10m to 15m wide
 (B) Tree planting, 15' - 20m high, 15m to 20m wide
 (C) Tree planting, 20' - 25m high, 20m to 25m wide
 (D) Tree planting, 25' - 30m high, 25m to 30m wide
- Bulk Planting Grids**
 (A) Tree planting, 10' - 15m high, 10m to 15m wide
 (B) Tree planting, 15' - 20m high, 15m to 20m wide
 (C) Tree planting, 20' - 25m high, 20m to 25m wide
 (D) Tree planting, 25' - 30m high, 25m to 30m wide
- Natural Play Features**
 (A) Tree planting, 10' - 15m high, 10m to 15m wide
 (B) Tree planting, 15' - 20m high, 15m to 20m wide
 (C) Tree planting, 20' - 25m high, 20m to 25m wide
 (D) Tree planting, 25' - 30m high, 25m to 30m wide

- Planting Bench**
 (A) Tree planting, 10' - 15m high, 10m to 15m wide
 (B) Tree planting, 15' - 20m high, 15m to 20m wide
 (C) Tree planting, 20' - 25m high, 20m to 25m wide
 (D) Tree planting, 25' - 30m high, 25m to 30m wide
- Block Wall Seating**
 (A) Tree planting, 10' - 15m high, 10m to 15m wide
 (B) Tree planting, 15' - 20m high, 15m to 20m wide
 (C) Tree planting, 20' - 25m high, 20m to 25m wide
 (D) Tree planting, 25' - 30m high, 25m to 30m wide
- Play Mound**
 (A) Tree planting, 10' - 15m high, 10m to 15m wide
 (B) Tree planting, 15' - 20m high, 15m to 20m wide
 (C) Tree planting, 20' - 25m high, 20m to 25m wide
 (D) Tree planting, 25' - 30m high, 25m to 30m wide
- Reversible Footpath**
 (A) Tree planting, 10' - 15m high, 10m to 15m wide
 (B) Tree planting, 15' - 20m high, 15m to 20m wide
 (C) Tree planting, 20' - 25m high, 20m to 25m wide
 (D) Tree planting, 25' - 30m high, 25m to 30m wide

- Feature Paved Seating Area**
 (A) Tree planting, 10' - 15m high, 10m to 15m wide
 (B) Tree planting, 15' - 20m high, 15m to 20m wide
 (C) Tree planting, 20' - 25m high, 20m to 25m wide
 (D) Tree planting, 25' - 30m high, 25m to 30m wide
- Block Bound Seating Area**
 (A) Tree planting, 10' - 15m high, 10m to 15m wide
 (B) Tree planting, 15' - 20m high, 15m to 20m wide
 (C) Tree planting, 20' - 25m high, 20m to 25m wide
 (D) Tree planting, 25' - 30m high, 25m to 30m wide
- Low Wall / Tree and Shrub Planter**
 (A) Tree planting, 10' - 15m high, 10m to 15m wide
 (B) Tree planting, 15' - 20m high, 15m to 20m wide
 (C) Tree planting, 20' - 25m high, 20m to 25m wide
 (D) Tree planting, 25' - 30m high, 25m to 30m wide
- Stone Wall / Terrace Steps**
 (A) Tree planting, 10' - 15m high, 10m to 15m wide
 (B) Tree planting, 15' - 20m high, 15m to 20m wide
 (C) Tree planting, 20' - 25m high, 20m to 25m wide
 (D) Tree planting, 25' - 30m high, 25m to 30m wide

- 2.5m High Vertical Blue Zoning**
 (A) Tree planting, 10' - 15m high, 10m to 15m wide
 (B) Tree planting, 15' - 20m high, 15m to 20m wide
 (C) Tree planting, 20' - 25m high, 20m to 25m wide
 (D) Tree planting, 25' - 30m high, 25m to 30m wide
- Access Point**
 (A) Tree planting, 10' - 15m high, 10m to 15m wide
 (B) Tree planting, 15' - 20m high, 15m to 20m wide
 (C) Tree planting, 20' - 25m high, 20m to 25m wide
 (D) Tree planting, 25' - 30m high, 25m to 30m wide

REV	DATE	AMENDMENT

CUNNANE STRATTON REYNOLDS
LAND PLANNING & DESIGN

DUBLIN, CORK & GALWAY
 GARDENS HOUSE, 24 SUFFOLK STREET, DUBLIN 2, D02 AP58
 T: 01 454 8414
 E: info@cunnane-stratton.com

PROJECT: DUNMORE RIVER WALK
DATE: DEC - 2025
SCALE: 1:200 @ A1
DRAWING CHECKED: DM KM
DRAWING: Landscape Masterplan
DRAWING NO.: 24380-1-102



LEGEND & INDICATIVE PLANTING SCHEDULE:

<p>Proposed Riverside Trees</p> <ul style="list-style-type: none"> (A) Plant quantity: 10 / 10m grid, 4m to 10m (B) Plant quantity: 10 / 10m grid, 4m to 10m (C) Plant quantity: 10 / 10m grid, 4m to 10m <p>Proposed Ornamental Trees</p> <ul style="list-style-type: none"> (D) Plant quantity: 10 / 10m grid, 4m to 10m (E) Plant quantity: 10 / 10m grid, 4m to 10m (F) Plant quantity: 10 / 10m grid, 4m to 10m (G) Plant quantity: 10 / 10m grid, 4m to 10m <p>Existing / Relocated / Proposed Street Planting</p> <ul style="list-style-type: none"> (H) Plant quantity: 10 / 10m grid, 4m to 10m (I) Plant quantity: 10 / 10m grid, 4m to 10m (J) Plant quantity: 10 / 10m grid, 4m to 10m <p>Proposed Shrubs & Perennials Planting</p> <ul style="list-style-type: none"> (K) Plant quantity: 10 / 10m grid, 4m to 10m (L) Plant quantity: 10 / 10m grid, 4m to 10m (M) Plant quantity: 10 / 10m grid, 4m to 10m 	<p>Native Wildflower Planting</p> <ul style="list-style-type: none"> (N) Plant quantity: 10 / 10m grid, 4m to 10m (O) Plant quantity: 10 / 10m grid, 4m to 10m <p>Further Street Planting Enhancements to Existing</p> <ul style="list-style-type: none"> (P) Plant quantity: 10 / 10m grid, 4m to 10m (Q) Plant quantity: 10 / 10m grid, 4m to 10m (R) Plant quantity: 10 / 10m grid, 4m to 10m <p>Bulk Planting Units</p> <ul style="list-style-type: none"> (S) Plant quantity: 10 / 10m grid, 4m to 10m (T) Plant quantity: 10 / 10m grid, 4m to 10m <p>Natural Tree Features</p> <ul style="list-style-type: none"> (U) Plant quantity: 10 / 10m grid, 4m to 10m (V) Plant quantity: 10 / 10m grid, 4m to 10m 	<p>Planting Details</p> <ul style="list-style-type: none"> (W) Plant quantity: 10 / 10m grid, 4m to 10m (X) Plant quantity: 10 / 10m grid, 4m to 10m <p>Planting Details</p> <ul style="list-style-type: none"> (Y) Plant quantity: 10 / 10m grid, 4m to 10m (Z) Plant quantity: 10 / 10m grid, 4m to 10m <p>Planting Details</p> <ul style="list-style-type: none"> (AA) Plant quantity: 10 / 10m grid, 4m to 10m (AB) Plant quantity: 10 / 10m grid, 4m to 10m 	<p>Planting Details</p> <ul style="list-style-type: none"> (AC) Plant quantity: 10 / 10m grid, 4m to 10m (AD) Plant quantity: 10 / 10m grid, 4m to 10m <p>Planting Details</p> <ul style="list-style-type: none"> (AE) Plant quantity: 10 / 10m grid, 4m to 10m (AF) Plant quantity: 10 / 10m grid, 4m to 10m 	<p>Planting Details</p> <ul style="list-style-type: none"> (AG) Plant quantity: 10 / 10m grid, 4m to 10m (AH) Plant quantity: 10 / 10m grid, 4m to 10m <p>Planting Details</p> <ul style="list-style-type: none"> (AI) Plant quantity: 10 / 10m grid, 4m to 10m (AJ) Plant quantity: 10 / 10m grid, 4m to 10m 	<p>Planting Details</p> <ul style="list-style-type: none"> (AK) Plant quantity: 10 / 10m grid, 4m to 10m (AL) Plant quantity: 10 / 10m grid, 4m to 10m <p>Planting Details</p> <ul style="list-style-type: none"> (AM) Plant quantity: 10 / 10m grid, 4m to 10m (AN) Plant quantity: 10 / 10m grid, 4m to 10m 	<p>Planting Details</p> <ul style="list-style-type: none"> (AO) Plant quantity: 10 / 10m grid, 4m to 10m (AP) Plant quantity: 10 / 10m grid, 4m to 10m <p>Planting Details</p> <ul style="list-style-type: none"> (AQ) Plant quantity: 10 / 10m grid, 4m to 10m (AR) Plant quantity: 10 / 10m grid, 4m to 10m 	<p>Planting Details</p> <ul style="list-style-type: none"> (AS) Plant quantity: 10 / 10m grid, 4m to 10m (AT) Plant quantity: 10 / 10m grid, 4m to 10m <p>Planting Details</p> <ul style="list-style-type: none"> (AU) Plant quantity: 10 / 10m grid, 4m to 10m (AV) Plant quantity: 10 / 10m grid, 4m to 10m 	<p>Planting Details</p> <ul style="list-style-type: none"> (AW) Plant quantity: 10 / 10m grid, 4m to 10m (AX) Plant quantity: 10 / 10m grid, 4m to 10m <p>Planting Details</p> <ul style="list-style-type: none"> (AY) Plant quantity: 10 / 10m grid, 4m to 10m (AZ) Plant quantity: 10 / 10m grid, 4m to 10m 	<p>Planting Details</p> <ul style="list-style-type: none"> (BA) Plant quantity: 10 / 10m grid, 4m to 10m (BB) Plant quantity: 10 / 10m grid, 4m to 10m <p>Planting Details</p> <ul style="list-style-type: none"> (BC) Plant quantity: 10 / 10m grid, 4m to 10m (BD) Plant quantity: 10 / 10m grid, 4m to 10m 	<p>Planting Details</p> <ul style="list-style-type: none"> (BE) Plant quantity: 10 / 10m grid, 4m to 10m (BF) Plant quantity: 10 / 10m grid, 4m to 10m <p>Planting Details</p> <ul style="list-style-type: none"> (BG) Plant quantity: 10 / 10m grid, 4m to 10m (BH) Plant quantity: 10 / 10m grid, 4m to 10m 	<p>Planting Details</p> <ul style="list-style-type: none"> (BI) Plant quantity: 10 / 10m grid, 4m to 10m (BJ) Plant quantity: 10 / 10m grid, 4m to 10m <p>Planting Details</p> <ul style="list-style-type: none"> (BK) Plant quantity: 10 / 10m grid, 4m to 10m (BL) Plant quantity: 10 / 10m grid, 4m to 10m 	<p>Planting Details</p> <ul style="list-style-type: none"> (BM) Plant quantity: 10 / 10m grid, 4m to 10m (BN) Plant quantity: 10 / 10m grid, 4m to 10m <p>Planting Details</p> <ul style="list-style-type: none"> (BO) Plant quantity: 10 / 10m grid, 4m to 10m (BP) Plant quantity: 10 / 10m grid, 4m to 10m 	<p>Planting Details</p> <ul style="list-style-type: none"> (BQ) Plant quantity: 10 / 10m grid, 4m to 10m (BR) Plant quantity: 10 / 10m grid, 4m to 10m <p>Planting Details</p> <ul style="list-style-type: none"> (BS) Plant quantity: 10 / 10m grid, 4m to 10m (BT) Plant quantity: 10 / 10m grid, 4m to 10m 	<p>Planting Details</p> <ul style="list-style-type: none"> (BU) Plant quantity: 10 / 10m grid, 4m to 10m (BV) Plant quantity: 10 / 10m grid, 4m to 10m <p>Planting Details</p> <ul style="list-style-type: none"> (BW) Plant quantity: 10 / 10m grid, 4m to 10m (BX) Plant quantity: 10 / 10m grid, 4m to 10m 	<p>Planting Details</p> <ul style="list-style-type: none"> (BY) Plant quantity: 10 / 10m grid, 4m to 10m (BZ) Plant quantity: 10 / 10m grid, 4m to 10m <p>Planting Details</p> <ul style="list-style-type: none"> (C0) Plant quantity: 10 / 10m grid, 4m to 10m (C1) Plant quantity: 10 / 10m grid, 4m to 10m 	<p>Planting Details</p> <ul style="list-style-type: none"> (C2) Plant quantity: 10 / 10m grid, 4m to 10m (C3) Plant quantity: 10 / 10m grid, 4m to 10m <p>Planting Details</p> <ul style="list-style-type: none"> (C4) Plant quantity: 10 / 10m grid, 4m to 10m (C5) Plant quantity: 10 / 10m grid, 4m to 10m 	<p>Planting Details</p> <ul style="list-style-type: none"> (C6) Plant quantity: 10 / 10m grid, 4m to 10m (C7) Plant quantity: 10 / 10m grid, 4m to 10m <p>Planting Details</p> <ul style="list-style-type: none"> (C8) Plant quantity: 10 / 10m grid, 4m to 10m (C9) Plant quantity: 10 / 10m grid, 4m to 10m 	<p>Planting Details</p> <ul style="list-style-type: none"> (CA) Plant quantity: 10 / 10m grid, 4m to 10m (CB) Plant quantity: 10 / 10m grid, 4m to 10m <p>Planting Details</p> <ul style="list-style-type: none"> (CC) Plant quantity: 10 / 10m grid, 4m to 10m (CD) Plant quantity: 10 / 10m grid, 4m to 10m 	<p>Planting Details</p> <ul style="list-style-type: none"> (CE) Plant quantity: 10 / 10m grid, 4m to 10m (CF) Plant quantity: 10 / 10m grid, 4m to 10m <p>Planting Details</p> <ul style="list-style-type: none"> (CG) Plant quantity: 10 / 10m grid, 4m to 10m (CH) Plant quantity: 10 / 10m grid, 4m to 10m 	<p>Planting Details</p> <ul style="list-style-type: none"> (CI) Plant quantity: 10 / 10m grid, 4m to 10m (CJ) Plant quantity: 10 / 10m grid, 4m to 10m <p>Planting Details</p> <ul style="list-style-type: none"> (CK) Plant quantity: 10 / 10m grid, 4m to 10m (CL) Plant quantity: 10 / 10m grid, 4m to 10m 	<p>Planting Details</p> <ul style="list-style-type: none"> (CM) Plant quantity: 10 / 10m grid, 4m to 10m (CN) Plant quantity: 10 / 10m grid, 4m to 10m <p>Planting Details</p> <ul style="list-style-type: none"> (CO) Plant quantity: 10 / 10m grid, 4m to 10m (CP) Plant quantity: 10 / 10m grid, 4m to 10m 	<p>Planting Details</p> <ul style="list-style-type: none"> (CQ) Plant quantity: 10 / 10m grid, 4m to 10m (CR) Plant quantity: 10 / 10m grid, 4m to 10m <p>Planting Details</p> <ul style="list-style-type: none"> (CS) Plant quantity: 10 / 10m grid, 4m to 10m (CT) Plant quantity: 10 / 10m grid, 4m to 10m 	<p>Planting Details</p> <ul style="list-style-type: none"> (CU) Plant quantity: 10 / 10m grid, 4m to 10m (CV) Plant quantity: 10 / 10m grid, 4m to 10m <p>Planting Details</p> <ul style="list-style-type: none"> (CW) Plant quantity: 10 / 10m grid, 4m to 10m (CX) Plant quantity: 10 / 10m grid, 4m to 10m 	<p>Planting Details</p> <ul style="list-style-type: none"> (CY) Plant quantity: 10 / 10m grid, 4m to 10m (CZ) Plant quantity: 10 / 10m grid, 4m to 10m <p>Planting Details</p> <ul style="list-style-type: none"> (D0) Plant quantity: 10 / 10m grid, 4m to 10m (D1) Plant quantity: 10 / 10m grid, 4m to 10m
--	---	---	---	---	---	---	---	---	---	---	---	---	---	---	---	---	---	---	---	---	---	---	---	---

REV	DATE	AMENDMENT
CUNNANE STRATTON REYNOLDS LAND PLANNING & DESIGN		
DUBLIN, CORN & GALWAY GARDENS/HOUSE, 24 SUFFOLK STREET, DUBLIN 2, D02 APF8 TEL: 01 851 6416 EMAIL: info@cunnane.ie		
PROJECT:	DATE:	DEC - 2025
DUNMORE RIVER WALK	SCALE:	1:200 @ A1
DRAWING:	CHECKED:	DM
Landscape Masterplan	DRAWING NO.:	24380-1-103

CYCLE PARKING PROVISIONS TO ENCOURAGE ACTIVE TRAVEL



NATIVE WILDFLOWER PLANTING MIX TO PROVIDE A LOWER MOWING REGIME



OPENSOURCE TREE PLANTING



ACER CAMPESTRE



PYRUS CALLERYANA



SORBUS AUCUPARIA



FAGUS SYLVATICA 'DAWYK'

NATIVE RIVERSIDE TREE PLANTING



ALNUS GLUTINOSA



QUERCUS PETREA



SALIX SPP.



BETULA PUBESCENS

NATURAL PLAY FEATURES WITH CLIMBING BOULDERS, BALANCE LOGS AND PLAY MOUNDS



PICNIC SEATING AREA WITH VIEWS OF THE RIVER AND G.A.A. PITCHES





Comhairle Chontae na Gaillimhe
Galway County Council

Enhancement of Dunmore River Walk

Timeline

- March/April 2025 Public Consultation and public feedback comments
- April/May 2025 Review of Public Consultation comments and feedback
- May 2025 Amendments and adjustments to plan if necessary
- May 2025 – May 2026 Phase 1 of Enhancement Works



Comhairle Chontae na Gaillimhe
Galway County Council

**Have your
Say !**

We invite your feedback by 2nd April 2025

To share your thoughts and comments on this project, you can

- Submit using the 'Make a Submission' link on this [Consult.galway.ie](https://consult.galway.ie) page
- Email us at tuamareaoffice@galwaycoco.ie with the subject heading Dunmore River Walk submission
- Drop in to the Tuam Municipal District office High Street Tuam where the project will be on display