

Rinville Park

Sustainable Development Plan



Welcome to the Rinville Park Public Consultation
Shaping the Future of Rinville Park Together!



What is the Project?

Galway County Council is preparing a Sustainable Development Plan for Rinville Park, supported by funding from the Outdoor Recreation Infrastructure Scheme. This process is about shaping a shared future for Rinville—a park that reflects the needs of its users, protects its natural heritage, and enhances its role in the wider community.

Your voice is central. These boards summarise what we know so far, what you've told us, and what we're exploring. We invite you to share your views and ideas.

This project has been developed in collaboration with CSR, **ACT** and Enviroplan.

CUNNANE STRATTON REYNOLDS
LAND PLANNING & DESIGN

ACT



We want

to hear

your voice!



Vision Objectives

Our goal is to develop Rinville Park as a model for sustainable recreation, heritage conservation, and community inclusion, where biodiversity flourishes, local people feel ownership, and visitors experience the best of Galway's largest park.



Develop the park as an attraction



Enhance park experience



Attract domestic and international tourists



Promote well-being through nature



Engage with children's senses



Connect with children and families



Accessible nature-based education



Increase and preserve biodiversity



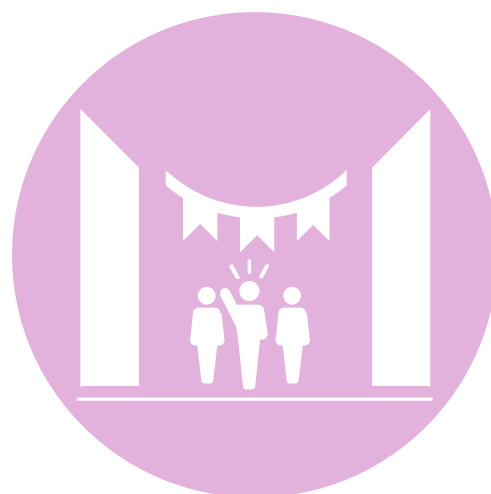
Promote sustainability



Promote environmental stewardship



Building on the park's heritage



Provide community spaces

Rinville Park

Future Vision

Park Analysis

What Makes Rinville Park Special?



A Rich History

Rich Heritage: Includes Rinville Castle, the Gate Lodge, and the remains of Rinville House, all steeped in the cultural legacy of the area.



An Active Community

The park supports families, events, and outdoor recreation, serving as the green heart of Oranmore.

Many community groups from the area use the park as part of their activities and actively participate in stewardship of the area.



The Ecological Value

The park lies adjacent to the Galway Bay Complex SAC and the Inner Galway Bay SPA, with high ecological sensitivity. The Park itself holds a diversity of flora and fauna that is rich.



The Natural Beauty

Coastal views, woodlands, meadows, and a small lake provide a haven for people and wildlife.

The park is the centre point of these varied landscapes offering a diversity of experience and opportunity.

The Nature of Rinville Park

Flora

Native meadows are supporting pollinators and rare species like the Autumn Lady's-tresses. But there is room for improvement! Invasive species like Japanese Knotweed and Winter Heliotrope are also within in park indicating that a management strategy is needed. The existing lake and stream habitats are nutrient-rich but degraded; a targeted restoration plan is recommended.

Fauna

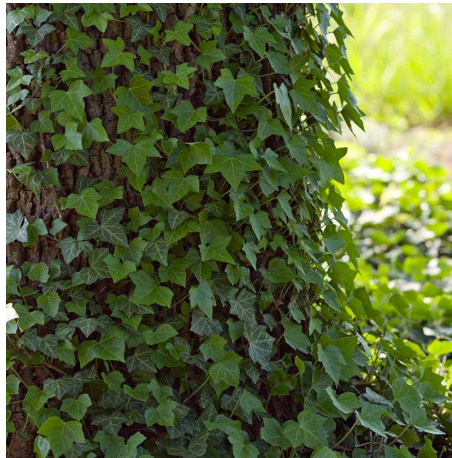
Nine Irish bat species with high suitability habitat. The Castle and Manor buildings are known roosting sites

Important bird species include robin, chough, chiffchaff, and mallard ducks with ducklings spotted at the lake.

Woodland Area Species



Brambles



Ivy



Dock leaves



Sycamore



Sitka Spruce



Elm



Hawthorn



Ash



Catchweed bedstraw



Common nettle



Grassland Area Species



Common Daisy



Creeping Buttercup



Catchweed bedstraw



Herb robert



Common nettle



Elm



Beech



Oak



Purple Sycamore



Elder



Autumn Lady's Tresses

Birds



European robin



Jackdaw



Red-billed chough



Goldcrest



Magpies



Common chiffchaff



Blue Tit



Great Tit



Woodpigeon



Eurasian wren



Eurasian blackcap



Mallard

Bats



Common Pipistrelle



Leisler's Bat



Soprano Pipistrelle

Other Mammals



Red Squirrel



Hedgehog



Irish Hare



Irish Stoat



Red Fox



Brown rat

Some Associated Groups & Clubs

A key opportunity to support in the sustainable development of the park lies in the community groups using the park, many of which have submitted ideas of its future. Inclusion of these groups in use and management of the park will positively contribute towards it's stewardship.

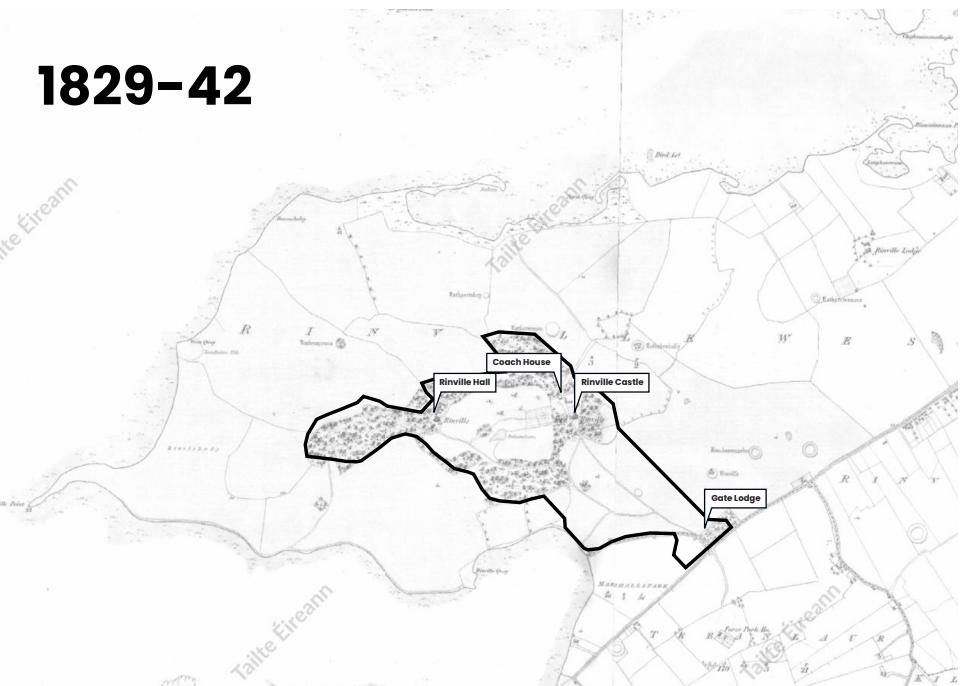


Rinville Shore Group

Oranmore Tidy Towns

Cairde Rinn Mhíl

Rinville's History through Maps



Rinvile Park Future Vision

What you've told us

Key Themes Emerging from the Community
We've gathered ideas from public workshops, written submissions, and partner groups. Here's what's coming through clearly:



“Support nature and biodiversity”

You told us:

"Keep nature wild" – support for rewilding, bluebells and wild garlic, and native meadows.

The Autumn Lady's-tresses orchid (classified as Near Threatened) has been recorded on site, a success of "no-mow" zones

Need for an updated biodiversity plan—including mapping, monitoring, and active invasive species management.

Support for biodiversity corridors to connect woodlands and improve habitat connectivity for bats, red squirrels, and birds



"Celebrate the rich history"

You told us:

Rinville House should be stabilised, not restored, preserving its ruinous charm.

The Gate Lodge is deteriorating and could be protected through community partnerships.

Heritage is more than architecture: local stories, historic routes, and cemetery trails could all be explored.



“Encourage the park as a community space”

You told us:

Desire for more seating, sheltered areas, and gathering spaces like pavilions and fire pits.

Reuse buildings (e.g. the Gate Lodge or Tower House) as community hubs, interpretive spaces, or artist workshops.

Interest in nature-based education, school trips, and family-friendly signage made from natural materials.



“Recreational and Visitor Amenities”

You told us:

Better toilet and water facilities, especially near Rinville Point and the pier.

Additional playground space and age-appropriate facilities (e.g. over-12 play or skate features).

Interest in sauna, community garden, and potential eco-café inside adapted heritage structures.



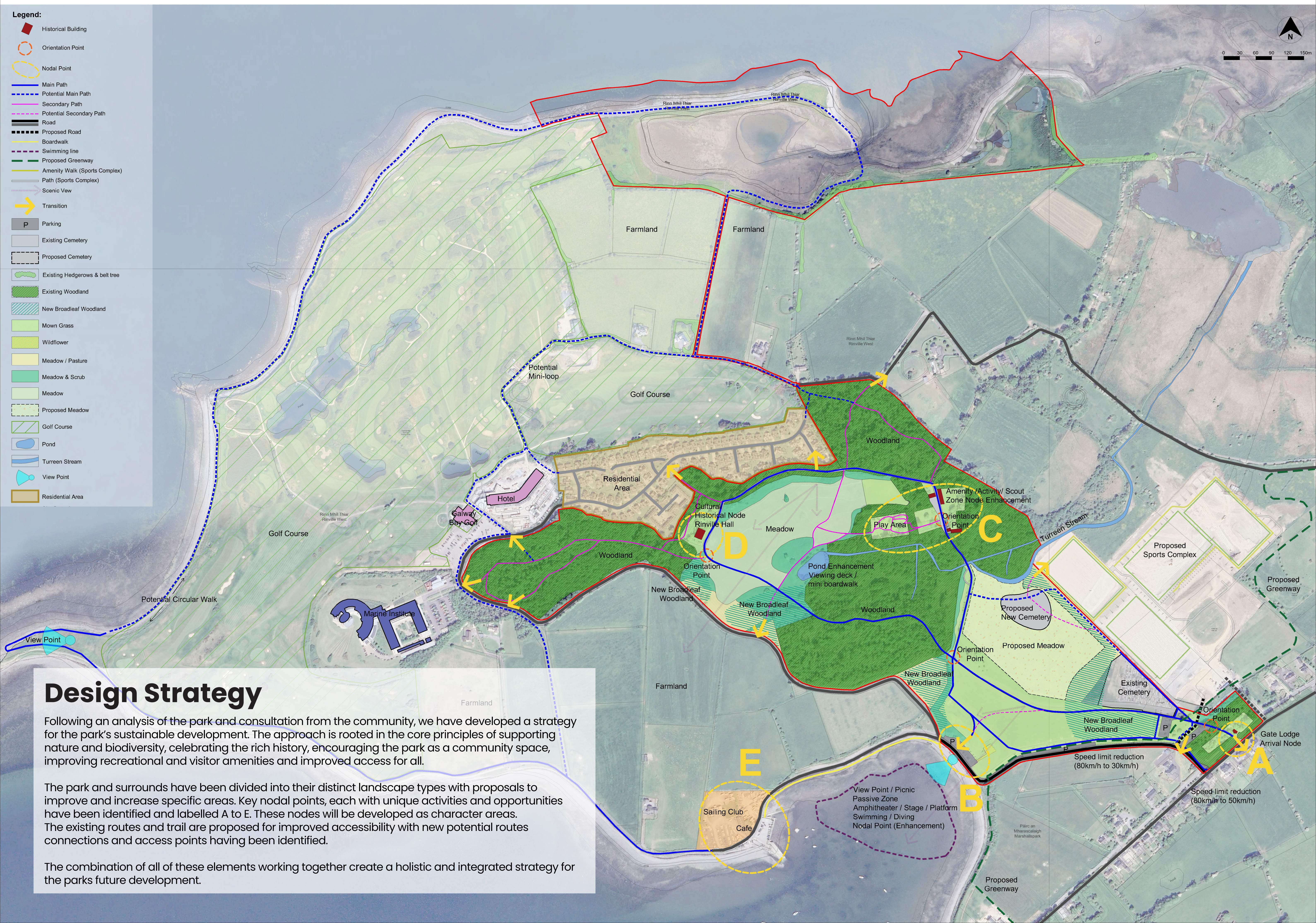
“Improve Access for All”

You told us:

Upgrade woodland paths from gravel to accessible surfaces.

Address safety concerns at entrances (especially the Gatehouse entrance and along Maree Road).

Expand accessible routes and link informal paths into looped walking trails.



Rinville Park

Future Vision

Nodal Zones

Key nodal zones through out the park act as activity and thematic areas providing a diversity of experience for users of the part, locals and visitors alike. The zone area at A) Arrival, B) Passive Zone, C) Amenity/Activity Zone, D) Cultural/Historic Zone, E) Pier.

The activities proposed in these areas build on the existing characters of the zone and have been informed by feedback from the initial community consultation.

These proposals will be further refined and improved following your feedback on what works and what else might be missing in the plan.

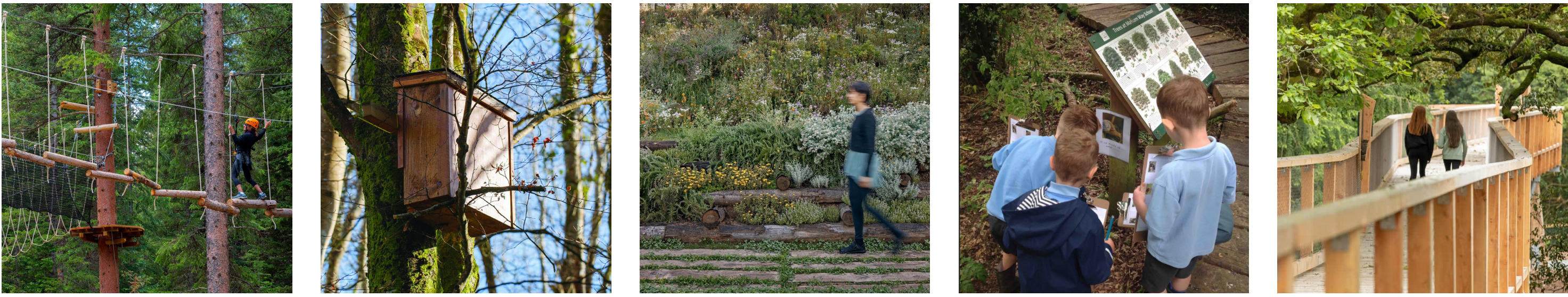
Arrival (Node A)



Passive Zone (Node B)



Amenity/Activity Zone (Node C)

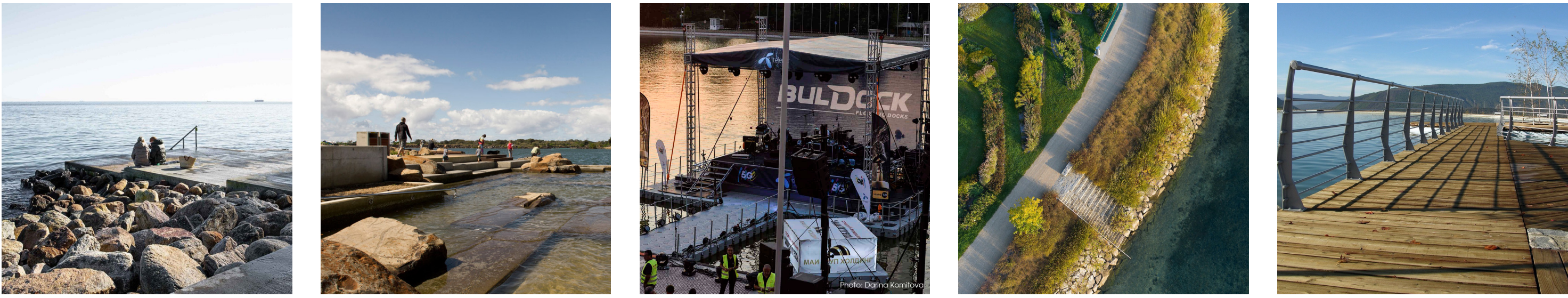


Cultural/Historic Zone (Node D)



- A) Arrival, is at the entrance car park where the gatehouse is. This is designed as a sensory space with strong visual and tactile planting. The area feels natural and calming.
- B) Passive Zone, is at the water's edge and acts as a key viewing point into the day. It's a place to gather, have a picnic and relax. The natural slope of the ground down towards the water creates the opportunity for an amphitheatre to be placed at the waters edge. This can act as a passive meeting space or a dramatic events space.
- C) The Amenity and Activity zone is proposed around the cluster of building by the castle. It already has a playground and the trees surrounding it provided the opportunity for tree top activities.
- D) The Cultural/Historic Zone is proposed around the ruins of the old Rinville Hall. within the shell of the old building which will act as a follie, will be interpretive signage and spaces to meet.
- E) The Pier's activities will be reinforced and supported with safe protected access to the water and an overall improvement of facilities.

Pier (Node E)



Key Project Proposals



Rinvile Park

Future Vision

Rinvile Castle



The Existing Rinvile Castle Building



Reference Project



Heritage Interpretation Centre, Thoor Ballylee, Co. Galway

The Coach House



The Existing Coach House Building

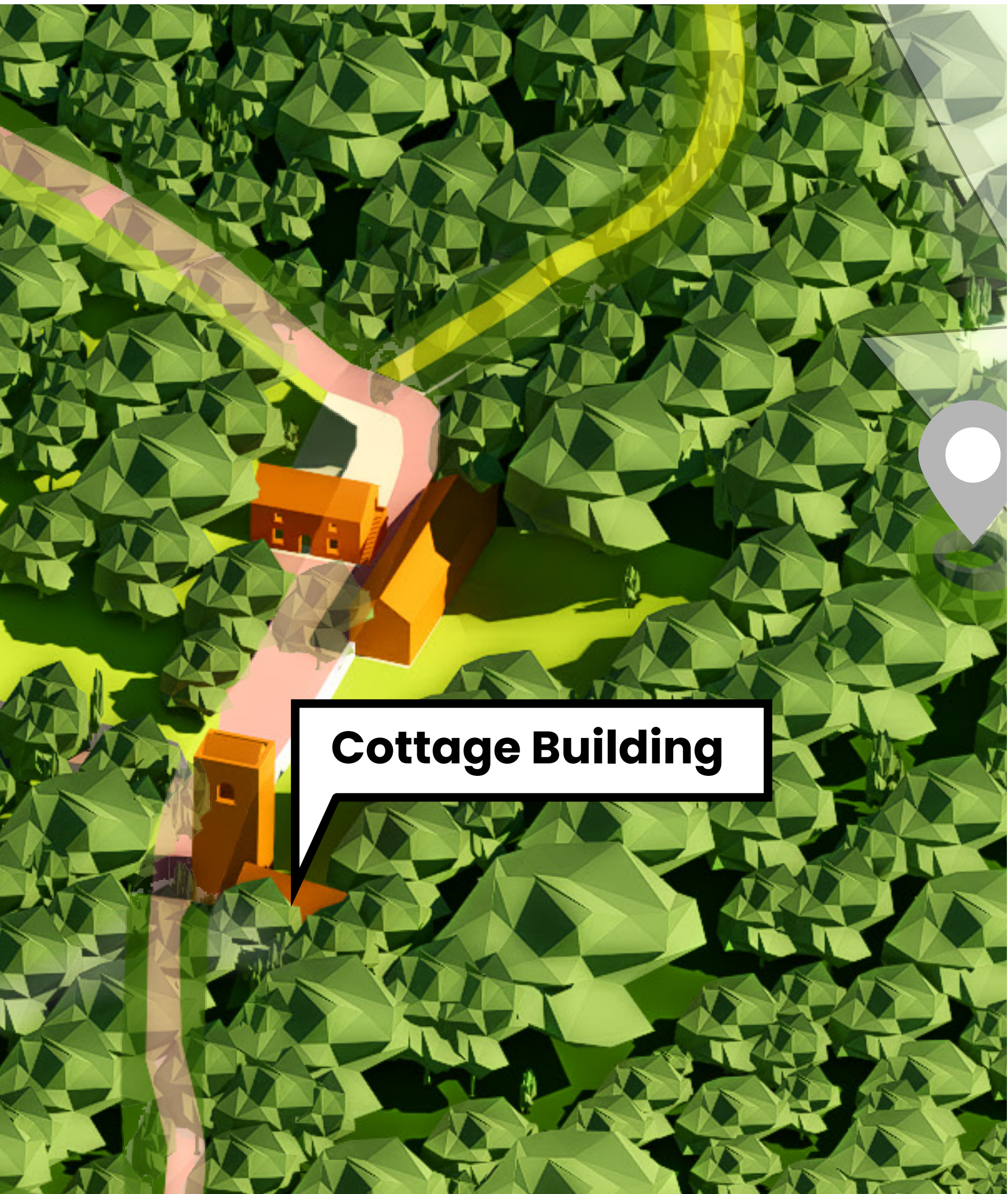


Reference Project



Portumna Castle Tea Rooms, Co. Galway

The Cottage Building



The Existing Cottage Building



Reference Project

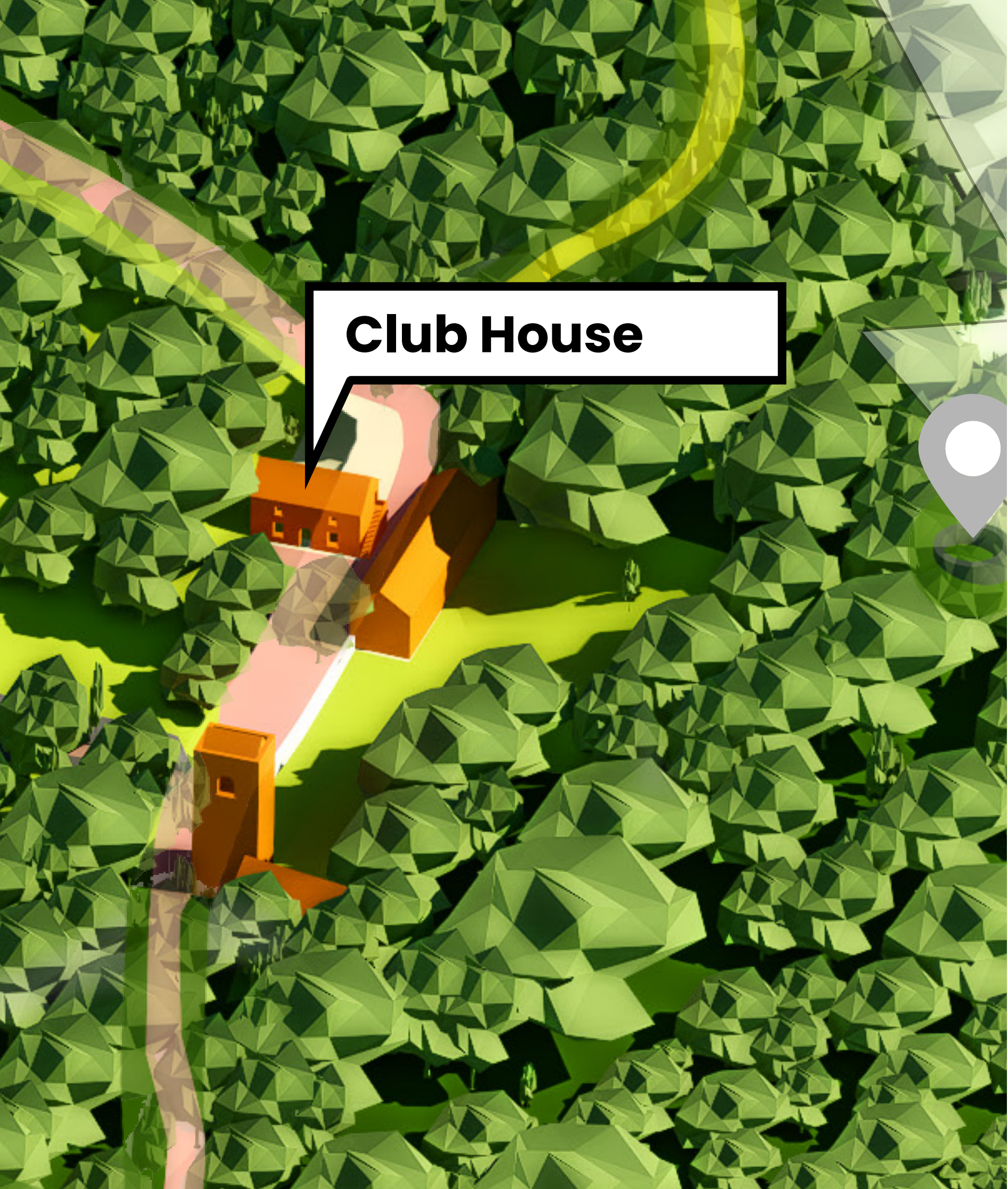


Flexible Event Space, Forty Hall, Enfield, England

Rinvile Park

Future Vision

The Club House



The Existing Club House Building



Reference Project



15th Bromley Scout Club House, Bromley, England

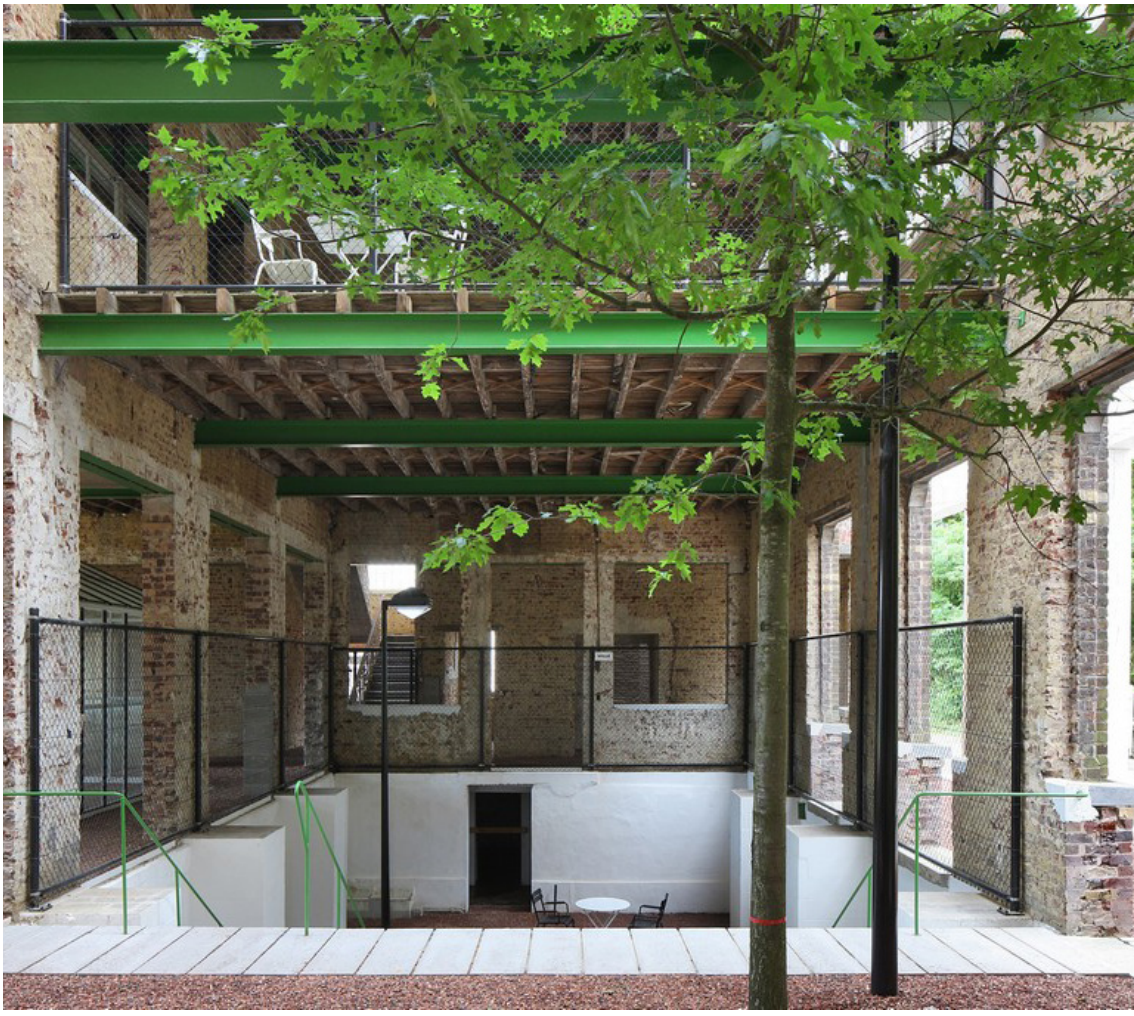
The Rinvile Hall



The Existing Rinvile Hall

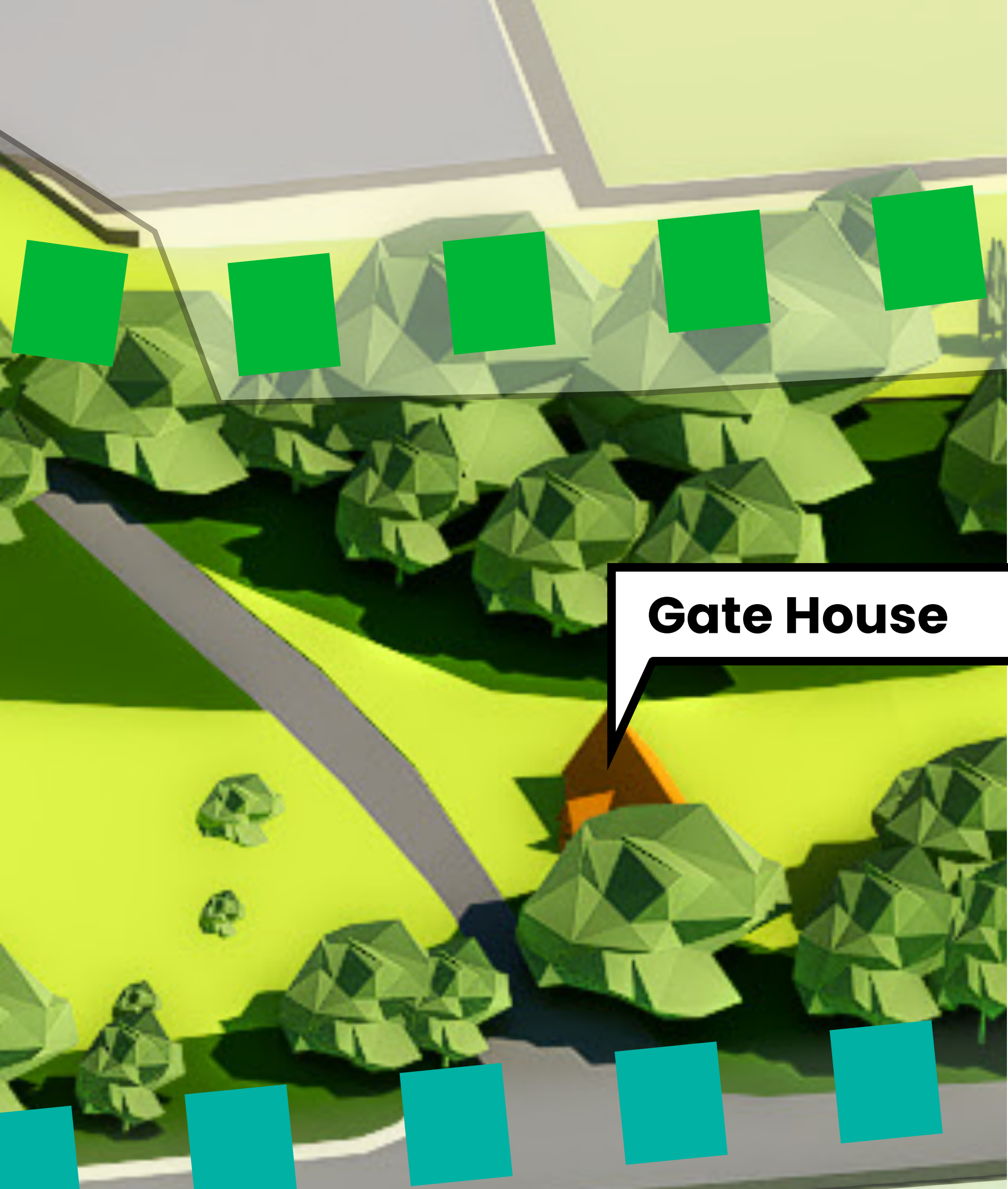


Reference Project



Modern Indoor/Outdoor Folly, PC Caritas, Melle, Belgium

The Gate House



The Existing Gate House Building



Reference Project



Writers Retreat, The Gatehouse, Whitby, England